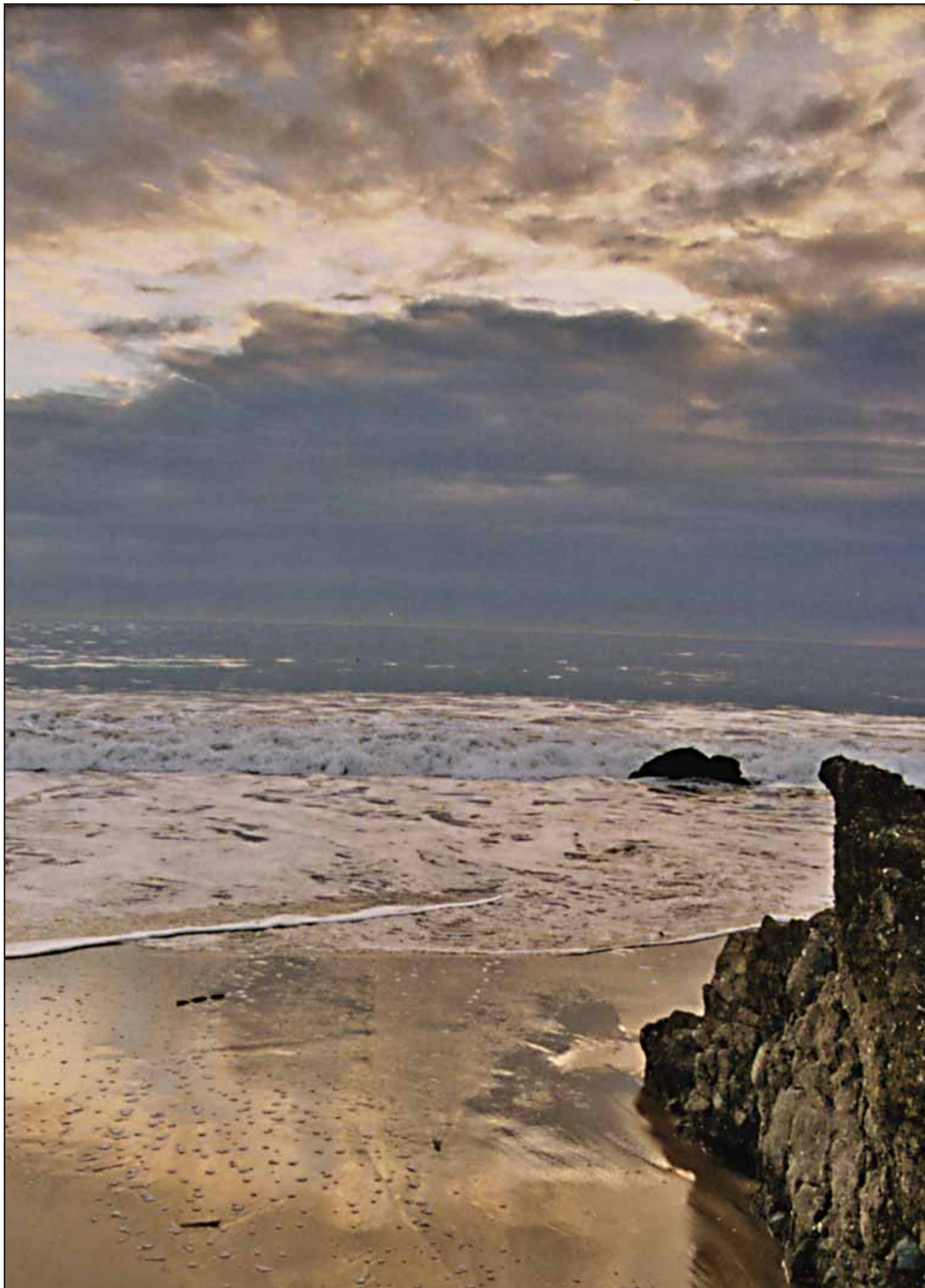


MALIBU *Surfside* NEWS



FRONT PAGE

High School Field Lights Fight Gets Legal Twist with District Documents

2

NEWS NOTES

Late Actor's Actor Played Part in Efforts to Create the City of Malibu

7

ISSUES

Planning Commission Grants City's First Permit for Cannabis Dispensary

9

COMMUNITY

Longtime Local Equestrian Group Hands Out Its Ribbons and Trophies

13

COUNTDOWN

Excitement Mounts as Moviedom Prepares to Celebrate Its Big Night

18

THIS WEEK

Opinion	4
People	6
Doings	8
Notices	10
Calendar	12
Community	13
Puzzle	16
Movies	18
Real Estate	19
Classifieds	22

DIDN'T IT RAIN, AND RAIN, AND RAIN—Areas of Malibu received anywhere from two to five inches of rainfall during the past seven days, according to rain gauge totals that are reported to the newspaper from locations up and down the local coast. As long as beachgoers stay away from storm drains during “first flushes,” the beaches—especially those west of Broad Beach—are polished to a prehistoric state of glistening pristineness during and after heavy rainfalls. MSN/Nick Rodionoff

Front PAGE

High School Sports Lights Ignite Board Session on BB Funding

■ School's LCP Includes a Deed Restriction Prohibiting All Outdoor Athletic Field Lighting

Plans to install Measure BB-funded field lighting at Malibu High School again received withering criticism from residents, this time at the Santa Monica Malibu Unified School District Board of Education meeting at Malibu City Hall.

Board members listened to public comment from nearly 40 speakers on various aspects of the planned measure BB improvements at Malibu High School. The meeting, which started late and ran past 11 p.m., drew a crowd so large that a room divider had to be opened to accommodate the overflow.

The audience had questions and concerns on topics ranging from septic system improvements to a plan to install synthetic turf at the stadium, but as expected, the controversial plan to install four or six 70-to-80-foot tall light poles that could be used up to 203 nights a year, and would be, according to one of the consultants at the meeting, as bright as a full moon, received the most comment.

The lighting plan, which would violate both the City of Malibu's Local Coastal Plan and MHS's California Coastal Commission-issued Coastal Development Permit, has been at the center of a firestorm of controversy since residents first learned of it in August.

An agenda item that would have authorized an additional \$17,850 in Measure BB funds to the consultant firm of CAA to facilitate an application to the California Coastal Commission for permission to use temporary field lighting for the 2009 football season was challenged prior to the

meeting, with the argument that, although the board authorized \$7000 in BB funds for CAA to pursue a permit for permanent field lighting in August, the temporary lights are a separate issue from the BB plan and cannot be funded with bond money.

When the Coastal Commission issued the high school's LCP for the football field, it imposed a special condition on the school in the form of a deed restriction prohibiting "all outdoor lighting for the athletic fields, whether temporary or permanent." The restriction "shall run with the land, binding all successors and assigns," according to the text of the amendment, dated Sept. 22, 2000.

The wording gives the following justification for the condition: "Special condition six will protect the nearby scenic areas and native wildlife from avoidable disturbance that would otherwise be associated with nighttime use of the football stadium/track and field facility."

As a result of the district's plan to install permanent field lighting as part of its BB improvement program, the Coastal Commission become aware of the illegal use of temporary field lighting to light a limited number of football games a year. The district, which had planned to seek a permit for the permanent lighting, must now also attempt to negotiate an amendment for the temporary lighting with the coastal agency, but not do so, opponents of the project argued, with BB money.

"We have been told that you may seek an amendment from the Coastal Commission and the City



TURNOUT—All sides of an ongoing debate over Measure BB-funded improvements for Malibu High School showed up at last Thursday's school board meeting at City Hall. Issues such as athletic field nighttime lighting are becoming more complicated as information about legal restrictions originally imposed on the MHS campus are being brought to light. MSN/Suzanne Guldemann

of Malibu for the use of temporary lighting. Clearly, temporary lighting is not eligible for BB funding and the use of bond money for

“Violations of the use of bond revenues are serious matters.”

this purpose would be even more egregious,” Steve Scheinkman, a member of the newly formed Malibu Park Safety Coalition, told the board.

“Measure BB, the Santa Monica-Malibu Schools Safety and Repair Measure, was approved by the citizens of Santa Monica and Malibu with the understanding that the revenues would be used to improve health, safety and class instruction—the exact words of BB,” Scheinkman said. “Nowhere in BB’s text is new athletic field lighting identified as a critical need.”

“The only reference to athletic fields in the project list is in the section that relates to renovations, repairs and upgrade projects, Scheinkman stated. “This cannot be stretched to include new field lighting at MHS—the lighting does not legally exist today and you cannot renovate, repair or upgrade something that does not exist. Violations of the use of bond revenues are serious

matters,” he warned the board.

The board agreed that the temporary lighting was not in the scope of BB and removed that item from the consent calendar. However, they voted to proceed with the application by switching the \$17,850 to another source. Calls to the district's chief financial officer to ascertain that source of the funds were not returned before the Malibu Surfside News went to press.

During public comment, long-time Malibu Park resident Judi Hutchinson spoke to the board about the history of MHS. “Malibu High School was established as a small academic high school with a small athletic program, not to compete with [Santa Monica High School],” Hutchinson told the board. “Specifically, no foot-

(Continued on page 15)

Possibly Pilfered Palms Prompt Persistent Police Probe

■ Controversial Trees Mysteriously Disappeared from Malibu High School Grounds Two Weeks Ago

How do what is now said to be 85 palm trees disappear from the grounds of Malibu High School without anyone questioning their removal, or being able to provide any information on their current whereabouts?

That's the question now being investigated by the Lost Hills Sheriff's Station after the school reported the alleged theft of the trees on Saturday, Jan. 31.

MHS principal Mark Kelly told the Malibu Surfside News, “We at Malibu High did not authorize or know the trees were being removed. Similarly, no one at our district office authorized their removal.”

Kelly said, “Our information indicates that several individuals in two white trucks came to cam-

pus, removed the trees and filled the holes. I checked with our district office staff who reported that they had not authorized anyone to remove the trees.”

The principal added, “We are at a loss as to who took them and have reported their removal to the Sheriff's Department.”

Kelly said, “We have heard from both our director of maintenance and operations and the chief financial officer who both reported having no knowledge that the trees were being removed. These were the two individuals with whom we were discussing our options.”

Kelly indicated that the school and the district had been exploring whether some of the trees might remain on campus if moved to other areas on the grounds where

they would be less intrusive.

The possibly purloined trees were planted on the campus 12 weeks ago—over the Thanksgiving weekend—under similarly puzzling circumstances, with no public notice of the landscaping project having been provided.

As soon as the trees were in the ground, residents in the Malibu Park area began raising the issue that when fully grown, the queen palms could adversely impact their ocean views.

The trees are also viewed as highly flammable, and concerns were expressed about the appropriateness of their use as landscaping in a wildfire prone area.

Kelly said the school had hoped to “recapture some of the financial loss” from removing the trees by selling them to other

schools in the district.

The principal added that district staff was in the process of getting an estimate of what it would cost to remove the trees when it appears the palm pilferers took them without permission.

Kelly said that, at this point, the MHS landscaping committee “is not seeking to do any new improvements but have committed to maintaining the many past projects that have been completed in the last several years.”

Mary Hughes-O'Leary, the former head of the landscaping group, told The News there are two witnesses to the incident, both on staff at the school, who have been asked to report what they saw to detectives at Lost Hills.

She puts a value of \$10,000 on the missing trees and the labor

involved in their planting.

Hughes-O'Leary said, “I was shocked when I learned what happened. I couldn't believe it was true.” She said, “I am sure someone in the neighborhood hired people and removed them.”

The former Malibu High parent said there were potential buyers for some of the trees to help the volunteer landscaping group partially recoup their loss.

Hughes-O'Leary said, “Most of the visitors to the school come for sports events. There should be more than chain link and asphalt for them and the students.”

In a letter to the editor this week, she urges anyone with information about the incident to call the Lost Hills Sheriff's Station at 310-456-6652.

BY ANNE SOBLE

White House Signals Move Away from Oil and Gas Dependence in New Energy Plan

■ Direction Validates Local Opposition to Recent Bid for New Drilling Off Coast

Less than two weeks after the State Lands Commission vetoed the first new oil drilling proposal off the California coast in 40 years, the White House is taking steps toward developing a national energy policy along lines that differ sharply from the views of the previous Administration.

On Tuesday in Washington, Secretary of the Interior Ken Salazar announced an offshore energy plan with a strong emphasis on renewable resources.

The immediate strategy calls for "extending the public comment period on a proposed 5-year plan for oil and gas development on the U.S. Outer Continental Shelf by 180 days, assembling a detailed report from Interior Department agencies on conventional and renewable offshore energy resources, holding four regional conferences on the findings, and expediting renewable energy rulemaking for the [OCS]."

"To establish an orderly process that allows us to make wise decisions based on sound information, we need to set aside the Bush Administration's midnight timetable for its OCS drilling plan and create our own timeline," Salazar said.

On its last business day in office, the Bush Administration proposed a new five-year plan for offshore oil and gas leasing. Salazar said the deadline for public comment on that plan—March 23—does not provide enough time for public review or wise decision-making on behalf of the nation's taxpayers.

"The additional time we are providing will give states, stakeholders, and affected communities the opportunity to provide input on the future of our offshore areas," he said. "The additional time will allow us to restore an orderly process to our offshore energy planning."

Salazar said this evaluation of the proposed plan also requires that more information be obtained about offshore resources.

Salazar directed the United States Geological Survey, the Minerals Management Service, and other departmental scientists to report on offshore resources—conventional and renewable—along with information about potential impacts in 45 days.

Based on those reports, the Department of Interior will address any information gaps related to

the more than 1.7 billion acres of the Outer Continental Shelf, an area about three-fourths the size of the United States.

"To gather the best ideas for how we accomplish the task of gathering the offshore information we need, I will convene four regional meetings in the 30 days after MMS and USGS publish their report," Salazar said. One of these will be on the West Coast, where all interested parties will be able to offer recommendations "on how to move ahead with a comprehensive offshore energy plan."

Salazar added that he will create a framework for offshore renewable energy development, so that DOI can incorporate wind, wave, and ocean current energy into its offshore energy strategy. "The Bush Administration was so intent on opening new areas for oil and gas offshore that it torpedoed offshore renewable energy efforts," he said.

When in the U.S. Senate, Salazar helped craft and pass the Energy Policy Act of 2005 that required Interior to move quickly and issue, within nine months, rules and regulations to guide the development of offshore energy resources, such as wind, wave, and tidal power. The Bush Administration left office without putting any regulations in place "because it was not their priority," the Secretary said, "notwithstanding the requirement of the law."

"I intend to issue a final rulemaking for offshore renewables in the coming months, so that potential developers know the rules of the road," Salazar said. "This rulemaking will allow us to move from the 'oil and gas only' approach of the previous Administration to the comprehensive energy plan that we need."

"We need a new, comprehensive energy plan that takes us to the new energy frontier and secures our energy independence," Salazar said. "We must embrace President Obama's vision of energy independence for the sake of our national security, our economic security, and our environmental security."

By adding the 180-day extension to the original 60-day public comment period, interested parties will have been provided eight months to offer input on the proposed plan. The current comment period opened on Jan. 21.

BY ANNE SOBLE

Enviro and Surf Organizations Appeal Legacy Park Approvals

■ Move Could Be Precursor to Legal Action against City

To no one's surprise, a coalition of environmental and surfing groups is appealing the planning commission's decision approving the permits and entitlements for Legacy Park.

The Santa Monica Baykeeper, Heal the Bay, the Malibu Surfing Association, and Surfrider Foundation have jointly filed an appeal of the approval by the planning commission for plans to build a detention pond or basin for stormwater storage, restoration of coastal habitat and public park.

The groups are asking the city council to overturn the planning panel's approvals.

The specter of delay or litigation was so strong at the planning commission meeting, one commissioner unsuccessfully put forward a motion to delay approval for a year because of the concerns expressed by the enviro groups and the potential for lawsuits.

In a statement issued this week, Baykeeper said the project as designed "will not meet water quality standards and does not address Malibu's most serious water quality issue, disposal and treatment of sewage from commercial developments in the Civic Center area."

The 100-plus pages of submit-

tals and exhibits turned over to the city by the Baykeeper including material from a San Francisco-based attorney hired by the group has led some to think the environmental organizations are simply completing administrative requirements before they sue Malibu. The Baykeeper currently has two other lawsuits pending against the city in the courts.

"Legacy Park was originally intended to provide a desperately needed comprehensive solution to the chronic water quality problems of Malibu Creek, Malibu Lagoon and Surfrider Beach," said Tom Ford, executive director of the Baykeeper.

The Legacy Park project originally included a plan to address wastewater effluent and sewage in the Civic Center area. "The wastewater treatment system element of the project was removed a few weeks ago, almost six months after the public comment period closed," the press release mistakenly goes on to state.

However, the Malibu Surfside News revealed over a year ago the city was not moving forward with the wastewater component, but only the stormwater element.

An appellant letter sent to the

city states over a dozen objections to both the approvals and conditions granted by the planning panel last month.

Items the enviro groups object to include the proposed detention pond, which they contend has not been adequately analyzed for adverse public health impacts; that the installation of an irrigation system on the Legacy Park site has not been adequately analyzed for adverse hydrology and groundwater impacts; and the planned grading of 113,000 cubic yards has not been analyzed geotechnically. The review document "impermissibly defers analysis of project impacts and mitigation until after project approval."

Other plans, such as habitat restoration for vernal pools, details about landscaping, a water quality mitigation plan, erosion control plan and vegetation removal, also "impermissibly defer analysis of project impacts and mitigation."

In a 15-page appeal summary, the appellants take aim at the Legacy Park Environmental Impact Report, indicating there are numerous faults and inadequacies contained in the document.

The appeal charges that the EIR (Continued on page 7)

CCC Appeals Off-Site View Corridor

■ Approval Is Challenged as a Major Procedural Error

The California Coastal Commission is filing an appeal of Malibu's approval of Peter Morton's request for a complicated off-site view corridor proposal that requires a Local Coastal Program amendment. Simultaneously, Morton promised a \$1 million donation for Legacy Park.

Coastal Commissioners Sara Wan and Mary Shallenberger are listed as the appellants.

The complex scheme involves allowing an after-the-fact permit at Morton's Carbon Beach mansion, while calling for the demolition of a single-family residence on Big Rock Beach to create an off-site view corridor as mitigation for obstructing public views.

The city conditioned the permit to not become effective until the applicant obtained an LCPA from the Coastal Commission.

"To approve a [permit] concurrently with an associated LCP amendment, as the city has done in this case, is inconsistent with the certified Local Coastal Program. The required findings cannot be made," the appeal letter states.

The appellants indicate that when the Malibu planning commission approved the LCPA, it was difficult to predict if the LCPA would be approved or ap-

proved with modifications by the Coastal Commission. "Until such time as the LCP amendment is certified, it is not possible to determine if the project will be consistent with the LCP, as amended," the appeal letter goes on the state.

The proposal by Morton, the co-founder of the Hard Rock Cafe empire, initially ran into opposition from neighbors, when he proposed the view corridor be placed along La Costa Beach.

When he moved the proposal to Big Rock Beach after a failed attempt at Las Flores Beach and sweetened the deal with a pledge of \$1 million, city officials approved the application, once assured that no neighbors protested.

The matter was then approved by the city council, as the proposed LCPA must be approved by the city council as well as the Coastal Commission.

BY BILL KOENEKER

Burlap Bagging Surfers



SHREDS—Huge pieces of burlap from mega sandbag barriers constructed on Broad Beach Road—similar to the one pictured—were reported floating offshore this week and entangling surfers in the water. Many of the larger pieces have apparently floated farther out to sea, and local residents are inquiring about the damage they might cause to marine life. MSN/Nick Rodionoff

Town FORUM

LETTERS to the EDITOR RESCIND REQUEST

Editor:

In 2006, voters approved the Santa Monica-Malibu Schools Safety and Repair Measure BB in order to "improve health, safety and class instruction." Today, SMMUSD has a \$3 million deficit and will have a more than \$11 million deficit next year. It is already considering cutbacks on teachers and other essential educational resources. Yet the board has decided to dedicate a significant amount of money to overturn a long-standing environmental protection commitment by the Coastal Commission and the City of Malibu. That is, to preserve nighttime dark skies by prohibiting sports field lighting.

The sum of \$17,850 from General Operating Funds was approved for consultants to prepare and file an amendment to the Coastal Commission permit to allow temporary lights. Ironically, on the same day that the SMMUSD Board was taking this action, other public school districts such as Oxnard were instructing their schools to reduce field lighting to save money and teacher jobs. However, this sum is just a down payment, as a substantial sum will have to be approved and expended to support the application with expensive environmental and community impact and other reports. Reports already put together with Measure BB funds cannot be repurposed to support a non-BB expenditure.

The board ignored requests from residents to defer a vote to another meeting so that notice of the new proposal could be legally posted to ensure that the issue is fully vetted in public.

I call on the SMMUSD Board to rescind what they have approved, and to bring their priorities in line with those of the voters and taxpayers that they serve. In this time of shortages, every precious tax dollar must go to the essentials: teachers and the critical needs of the school and its students—health, safety and class instruction, just like the language of Measure BB requires. I believe to do otherwise is to perpetuate a fraud on the taxpayers.

Steve Scheinkman

TURF TANGLE

Editor:

At its most recent meeting this past Thursday, the SMMUSD Board gave approval to hire consultants to utilize Measure BB money to resurface the athletic field at Malibu High School with synthetic turf and add permanent lights to be used up to 203 nights per year. Both projects require a permit change from the California Coastal Commission and variances from the City of Malibu.

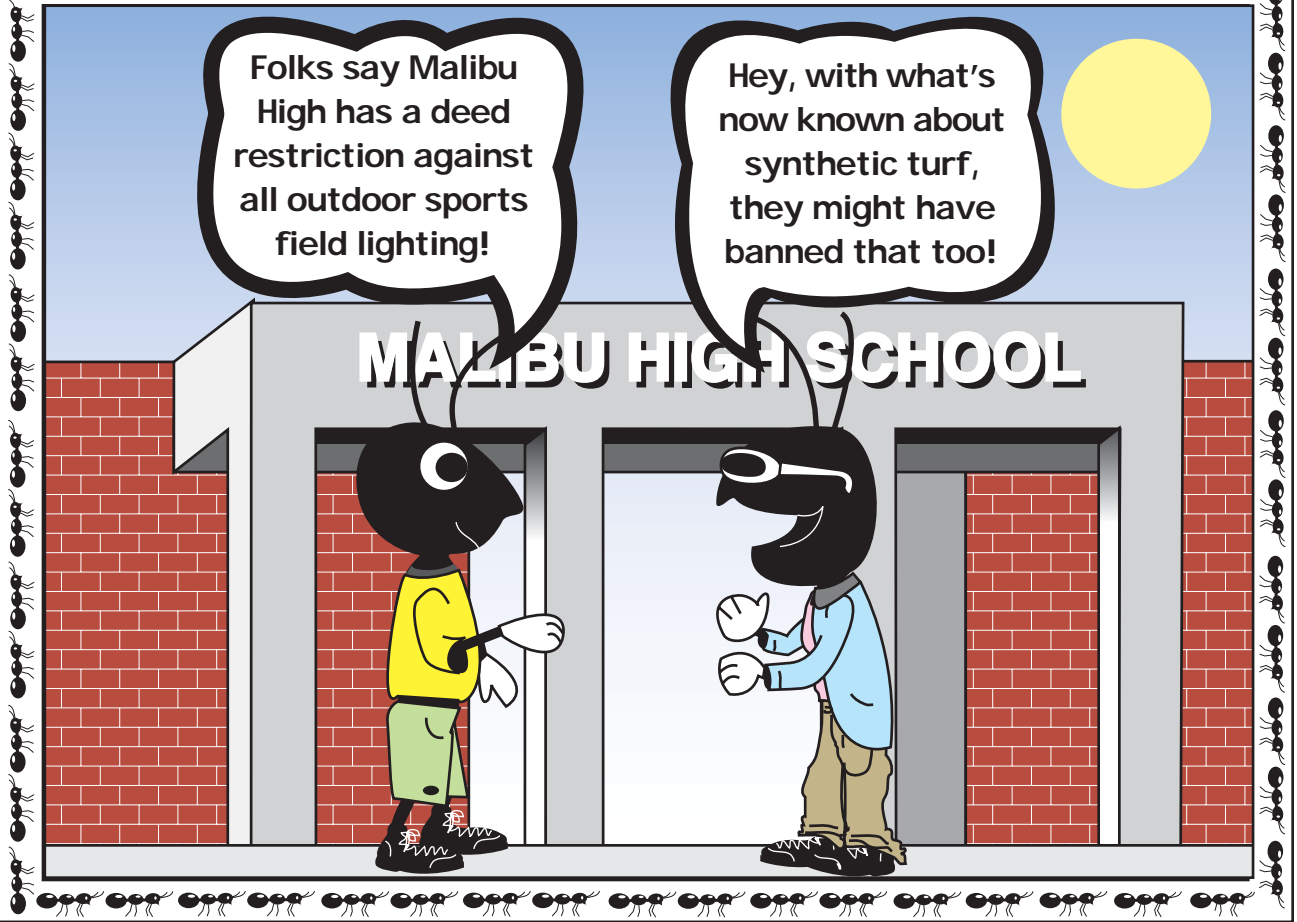
Residents pointed out that Measure BB was to improve health, safety and class instruction. It seems doubtful that there will be sufficient money to address the projects that were designated as priorities under the bond measure, let alone to fund other projects that appear to be outside of its approved scope. Apparently no funds have been allocated for improvements to any of Malibu's public elementary schools, therefore the board's decision to allocate funds for these consulting contracts should be deferred until such time as the permanent lights and artificial turf are deemed to be part of the scope of BB and that there is sufficient money to fund all of the critical needs of all of the Malibu schools.

I applaud the plans for the new buildings and enhancements for their emphasis on sustainability and environmental protection. They are well-matched with great curricula on environmental responsibility. Consider the fantastic Cornucopia organic farm and outdoor classroom on the high school campus as an example.

Malibu should be a leader in environmental causes given our unique geography, history and the city's founding Mission Statement. Contrast this with the proposal for the permanent outdoor sports lighting and synthetic turf. When deployed, the lights will create a jarring light bubble floating over the high school and surrounding neighborhood that will be visible from a long distance. The electric-

(Letters are continued on page 10)

APOLITICAL ANTICS



Publisher's NOTEBOOK

Thoughts Down Under and Hereabouts

Despite my readiness to support challenging Australia's corporate energy behemoths over unwanted and unneeded liquefied natural gas terminals in Southern California and elsewhere, my personal ties with Down Under preclude the eco-enviro differences ever becoming personal. Even if I did not know the wildfire-ravaged communities of Oz's state of Victoria as well as I do, I, and all of Malibu, would bemoan the tragic loss of hundreds of lives and nearly a thousand homes as over 400 blazes rage unchecked through southeastern Australia.

Victoria's coast has a climate and topography similar to ours. This is an area prone to wildfires, where local Aussies traditionally took care of themselves, but intense development has resulted in a more urbanized population that expects public services to always be able to respond to crisis, which they don't always have the personnel or equipment to do. Sound familiar? Malibuites know firsthand what an out-of-control wildfire fueled by 60-plus mph winds is like. However, despite Malibu having suffered comparable property losses, the human toll has never been as great. That arson may be playing a part in the Australian fires is totally reprehensible.

Malibuites are not just watching this tragedy on a human level, as it has major implications for local public policy as Los Angeles County explores how to employ the Oz "stay and defend" concept to our own wildfire situations, where there will also never be enough personnel and equipment when one or more major conflagrations are out of control. We must balance how to enable those who know what to do in the face of wildfire and have the will to do it, with getting people who do not have this wherewithal out of harm's way without shutting down Pacific Coast Highway. There cannot be an arbitrary dictum that only addresses part of the equation.

Hopefully, no censure will result from addressing wildfire issues just as Malibu is drying out from a troika of rainstorms, and looking ahead to another series of wet weather fronts in the next 10 days. It's true that our rain gauges runneth over and the creeks are freely flowing. The lush verdancy is intoxicating, but that intoxication

should not cloud the fact that California is in its third year of record drought. Even if this winter's rainfall is above average, that may not circumvent the imposition of stringent water controls in Southern California and statewide during the months ahead. The drought created by the current climate changes has a direct influence on wildfire patterns. The two factors are so intertwined that we cannot discuss one without considering the other.

◆ ◆ ◆

It is ironic that the rain that we so desperately need can exacerbate a complex array of water quality issues that are too often viewed simplistically. Fire, weather, and water are all inexorably linked. The problems cross city, county, state, national, and continental lines. They have to be responded to with a comprehensiveness that acknowledges that everyone has a stake in the solutions.

ANNE SOBLE

The Malibu Surfside News

(ISSN—0191-7307)

The Malibu Surfside News (Malibu News) is a weekly community newspaper and related website serving the greater Malibu, Los Angeles County area that is published by Malibu News Enterprises, Inc. It has been adjudicated a newspaper of general circulation, qualified to publish legal notices by the Superior Court of Los Angeles County, Decree No. C149959, May 3, 1976. The newspaper and website are copyrighted. All rights reserved. No reproduction or use of contents is permitted without express written authorization and negotiation of terms. The annual print subscription rate for Malibu zip codes is \$50, other U.S. area subscriptions are \$95 a year, and out-of-the-country subscriptions are \$150 a year.

EDITOR and PUBLISHER—ANNE C. S. SOBLE
CITY BUREAU—BILL KOENEKER
FEATURE SECTIONS—ROBBY MAZZA
PRODUCTION—GEORGE HAUPTMAN
SUZANNE GULDIMANN

Editorial/Production Contributors—Beverly Gosnell, Frank Lamonea, James Erickson, Jeremy Walker, Dick Callahan, Francine Brokaw, Ralfee Finn, Nicole Kliest, Jenna Williams

Newspaper Offices:
28990 Pacific Coast Highway
Malibu, CA 90265

Mailing Address: P.O. Box 903, Malibu, CA 90265
Telephones: 310-457-2112•457-4235•457-NEWS
FAX: 310-457-9908

Website: <http://www.malibusurfsidenews.com>
E-mail: Editor—editor@malibusurfsidenews.com
News—news@malibusurfsidenews.com
Advertising—ads@malibusurfsidenews.com

Periodicals Postage Paid at Malibu, CA 90265 Postmaster: Send address changes to: The Malibu Surfside News, P.O. Box 903, Malibu, CA 90265

LETTERS POLICY

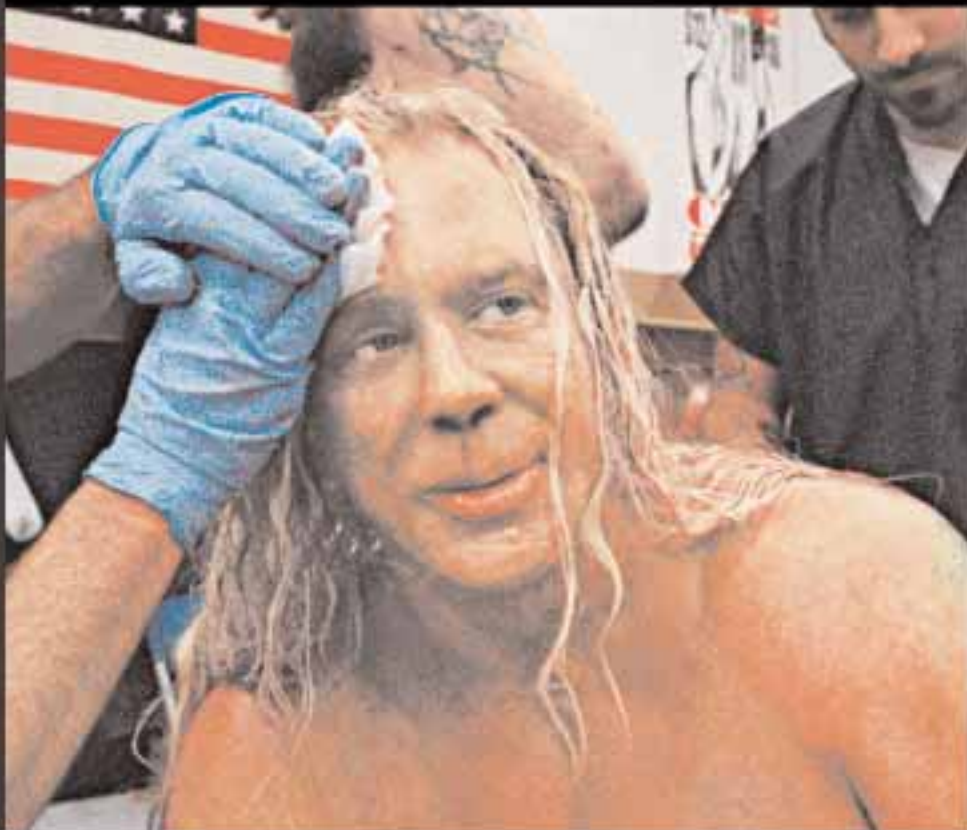
The Malibu Surfside News welcomes expressions of opinion and other commentary on communitywide concerns for consideration as letters to the editor. These communications should, ideally speaking, be typeset, double-spaced, and not exceed 250 words in length. E-mail and Mac CDs/disks are preferred. All communications must be signed and include a return address and daytime telephone number, but the author may request that his or her name be withheld and indicate the reason for the request. Priority is given to exclusive communications that substantively address key local public policy issues. All communications may be edited to meet space or other publication constraints. Letters selected for printing do not necessarily reflect the opinion of the publisher or others associated with this newspaper.

AMERICAN FILM INSTITUTE

"Mickey Rourke's towering performance as Randy 'The Ram' Robinson stands firmly in the pantheon of great American performances on film."

VARIETY ★ TODD McCARTHY

"A galvanizing, humorous, deeply moving portrait that instantly takes its place among the great, iconic screen performances."



**FOR YOUR CONSIDERATION
BEST ACTOR ★ MICKEY ROURKE**

THE WRESTLER

**ACADEMY AWARD NOMINEE
BEST ACTOR ★ MICKEY ROURKE**

**WINNER
BEST ACTOR ★ MICKEY ROURKE
GOLDEN GLOBE AWARD**

WESTERN SOCIETY OF FILM EDITORS • CHICAGO FILM CRITICS ASSOCIATION • GLOBE OF FILM CRITICS SOCIETY • HAWAIIAN FILM CRITICS SOCIETY
NEW YORK FILM CRITICS ASSOCIATION • RAMBO CITY FILM CRITICS CIRCLE • LONDON FILM CRITICS' CIRCLE • OREGONIAN FILM CRITICS SOCIETY
SOUTH FLEMING FILM CRITICS SOCIETY • SAN ANTONIO FILM CRITICS SOCIETY • SAN FRANCISCO FILM CRITICS SOCIETY • THE FILM SOCIETY OF LOS ANGELES
TOWSON FILM CRITICS SOCIETY • USA FILM CRITICS SOCIETY • WASHINGTON FILM CRITICS SOCIETY • WISCONSIN FILM CRITICS SOCIETY



www.foxsearchlight.com



MOBILE USERS - FOR SHOWTIMES - TEXT WRESTLER AND YOUR ZIP CODE TO 43 KIX (43549)

HOLLYWOOD ArcLight Cinemas At Sunset & Vine	SANTA MONICA Laemmle's Monica	WEST LOS ANGELES The Landmark at Westside Pavilion	SHERMAN OAKS ArcLight Cinemas At Sherman Oaks Galleria
----------------------------------------------------------	--------------------------------------------	-----------------------------------------------------------------	---------------------------------------------------------------------

CALL THEATRES FOR SHOWTIMES
AND AT THEATRES EVERYWHERE

Attention all AMPAS, DGA & WGA members: Your guild card will admit you and a guest to any performance, based on seating availability. AMC accepts AMPAS, ACE, ADS, ASC, BAFTA-LA, CAS, DGA, MPAC, MPSE, PGA & WGA. ArcLight/Pacific, Laemmle & Regency accept AMPAS, DGA & WGA. Mar-Thu only. Cinema/Century accepts AMPAS, BAFTA-LA, DGA, PGA & WGA. Harkins & Regal/Edwards/MK accept AMPAS, DGA, PGA & WGA. Landmark accepts AMPAS, DGA, PGA & WGA. Mar-Thu only (excluding holidays).

WINNER
GOLDEN GLOBE AWARD
BEST PICTURE

**10 ACADEMY AWARD NOMINATIONS
BEST PICTURE**

BEST DIRECTOR • BEST ADAPTED SCREENPLAY
BEST ORIGINAL SCORE • BEST ORIGINAL SONG "JAI HO"
BEST ORIGINAL SONG "O...SAYA" • BEST FILM EDITING
BEST CINEMATOGRAPHY • BEST SOUND MIXING • BEST SOUND EDITING

USA TODAY

"The EXHILARATING AND SWEEPING 'Slumdog Millionaire' is one in a million. The beautifully rendered and energetic tale CELEBRATES RESILIENCE, THE POWER OF KNOWLEDGE AND THE VITALITY OF THE HUMAN EXPERIENCE. It is unforgettable."

CLAUDIA PUIG

TIME

"'Slumdog Millionaire' connects with audiences because it STRIKES UNIVERSAL CHORDS ABOUT PERSONAL FULFILLMENT, ROMANTIC OBSESSION AND THE CHANCE TO RISE FROM THE BOTTOM

of the heap to the top of the Taj Mahal. For this, you can thank writer Simon Beaufoy and director Danny Boyle."

RICHARD CORLISS



A DANNY BOYLE FILM

slumdog millionaire

THE WALL STREET JOURNAL

"'Slumdog Millionaire' takes us to a level that TOPS THE ROCKIES FOR HEIGHTENED EXPERIENCE. THERE'S NEVER BEEN ANYTHING LIKE THIS. It's groundbreaking in substance, damned near earth-shaking in style."

JOE MORGENSTERN

**WINNER
BEST PICTURE**
THE DANNY F. JARVIS PRODUCER OF THE YEAR AWARD
PRODUCERS GUILD OF AMERICA

**WINNER
BEST PICTURE**
CRITICS' CHOICE AWARDS

**WINNER
BEST DIRECTOR**
DIRECTORS GUILD OF AMERICA

**WINNER
BEST ENSEMBLE CAST**
SCREEN ACTORS GUILD AWARDS

www.foxsearchlight.com

MOBILE USERS - FOR SHOWTIMES - TEXT SLUMDOG AND YOUR ZIP CODE TO 43 KIX (43549)

**SLUMDOG MILLIONAIRE PHOTOGRAPHIC EXHIBITION
A BEHIND-THE-SCENES LOOK**
February 4-15 • James Gray Gallery at Bergamot Station
2525 Michigan Ave., Bldg. #D4 • Santa Monica, CA 90404 • 310-315-9502
www.jamesgraygallery.com

WESTWOOD The Majestic Crest	CENTURY CITY AMC Century 15	SANTA MONICA Laemmle's Monica	WEST LOS ANGELES The Landmark at Westside Pavilion
HOLLYWOOD ArcLight Cinemas At Sunset & Vine	L.A. / BEVERLY HILLS Pacific's The Green Stadium 14	UNIVERSAL CITY Cayback Stadium 19 with IMAX	SHERMAN OAKS ArcLight Cinemas At the Sherman Oaks Galleria

CALL THEATRES FOR SHOWTIMES
AND AT THEATRES EVERYWHERE

Attention all AMPAS, DGA & WGA members: Your guild card will admit you and a guest to any performance, based on seating availability. AMC accepts AMPAS, ACE, ADS, ASC, BAFTA-LA, CAS, DGA, MPAC, MPSE, PGA & WGA. ArcLight/Pacific, Laemmle & Regency accept AMPAS, DGA & WGA. Mar-Thu only. The Bridge (landholder only) accepts AMPAS, DGA & WGA. Cinema/Century accepts AMPAS, BAFTA-LA, DGA, PGA & WGA. Harkins & Regal/Edwards/MK accept AMPAS, DGA, PGA & WGA. Landmark accepts AMPAS, DGA, PGA & WGA. Mar-Thu only (excluding holidays). Universal (landholder only) accepts AMPAS, DGA & WGA.

Malibu Brings Inspiration to an Artist Working in Two Worlds

For more than four decades, local artist Diana Shui-lu Wong's art has reflected contrasting styles, east and west sensibilities, ancient traditions incorporated into modern art, ying and yang if you will, while her style continues to evolve and change.

"I am a colorist, I love colors and I learned all my colors from nature," she says.

Her latest works are modular paintings, each measuring two feet by two feet that are abstract with sweeping brush strokes and vivid colors. The idea is novel, because Wong paints them so that they can be arranged and rearranged to create different experiences.

"Each one can be moved and turned in different ways to the color scheme," she says. "When I paint, I lay it down, and run around painting it, then I rearrange it, until I hang it on the wall and know exactly what I want. So I'm using my intuition instead of planning." She says, "It's not as easy as you think—you just don't throw down some paint, it takes a while."

Her artistic evolution has been influenced by her Chinese heritage and her studies in Italy.

She has also created several installations. One of her most famous is her "Labyrinth," which took several years to create. It is composed of 721 wooden and foam tiles that are painted using the five natural elements of Feng Shui—fire, earth, metal, water and wood—as her inspiration.

Wong grew up in Hong



A TOAST—Diana Shui-lu Wong in her studio at the head of one of her installations, "The Table of Bottomless Bliss." The piece consists of six dishes representing six negative yoga emotions. Wong says that if one can separate from and confront these emotions, they will reach a blissful state of living. All the "dishes" — "Ego Salad," "Jealousy Jello," "Greedy Spaghetti," "Attachment Pudding," "Anger Pie" and "Deep Fry Desire"—are constructed out of recycled materials, including dried paint and dried rags.

Kong and discovered an interest in art at a young age. She fashioned dolls and developed an interest in Chinese calligraphy, which her father had the children practice daily, in an attempt to keep ancient Chinese traditions alive. "I must have been the only kid in my family who was doing it willingly," she wrote in her autobiography "Merging, the Labyrinth and Beyond, Art and Life of Diana Wong."

Wong attended the Chinese University of Hong Kong, but soon grew bored with the curriculum and wanted to study art in Italy. Her father, although wary,

gave his permission, when she informed him that she had been studying Italian, had made arrangements for lodging in a convent and would be accompanied by a friend who was older. She attended the Academie de Belle Arte in Rome, where she received a bachelor's degree in decorative arts and continued her studies at the Royal School of Arts in London, studying classical oil painting.

Upon completion of her studies, Wong returned to China and exhibited her work in Hong Kong, where she enjoyed a "celebrity status." She married, then her husband was diagnosed

with terminal cancer. As she wrote in "Merging," "My life up until that moment—a fairy tale without life's inevitable responsibilities and shadows—had ended."

Two years later, seeking treatment in the United States, they moved to New York. Now with a young daughter in tow, the family relocated to California, to Silver Lake, where Wong's sister lived.

"When we first lived there, I painted in a bathtub, I had no place to paint, but the bathtub," she laughs. She then rented a garage as her studio and eventually shared a studio with two other women.

Wong viewed her move to California as a new beginning, and she created "Pacifica," a series of paintings recording her observations—much more modern than her prior work. "It was a new place, I had come to a new country," she says. "I had to depict what this country is about, I had to capture the light, the color when I travel. Once I absorb a place, I go on my own," she said. "I had been painting more traditionally classical paintings," she said.

Recalling the move she

nica. "It was when everyone was opening galleries in Santa Monica," she said. She soon found that commerce and art are a difficult mix and that running a successful gallery left her little time to pursue her art.

"I learned the experience of handling art as commerce, how it comes in handy, it's a very important lesson to an artist," she says, adding that because of this, she does not need to have an agent in the United States, although she does have one in China.

She began her abstract



FUSION—Wong's "Hidden Tao," one of her modular pieces, blends her classical style and her Chinese roots with the use of calligraphy as art.

adds, "That's the transition from the classical training and painting Impressionist landscapes and portraits when I was in Hong Kong. So when I came here, I said, 'It's a different life, so it's a different approach.'"

In the late 1980s, Wong relocated to Santa Monica and opened the "Merging One Gallery" in Santa Mo-

work, taking her classical training in a new direction. "I hate doing portraits for people because they demand 'I want to look younger' or 'I want this or that.' That's not me—you accept what I do, or you take a picture of yourself. So I started the abstract for that very reason, also abstract painting is not very easy."

(Continued on page 16)

DON'T MISS . . .

Juan Cabrillo's
KINDERGARTEN ROUND-UP

Wednesday
February 25th
8:30-11:00 AM



Kindergarten Orientation & Registration Information

For parents and their school-age children; age 5 on or before Dec. 2, 2009

CALL NOW TO RSVP 310.457-0360 x130/131

- Learn about the Kindergarten Program and Visit Classrooms with your child!
- Meet Specialists in Science, Art, Music, and Reading
- Learn about the Technology and Library Programs
- Visit Cabrillo's Crest Before & Afterschool Program

malibu Garden Club
Dear Community

Seeking gardens for our spring tour. We are also looking for new members.

Our speakers are on the first Wednesday of every month at 7:30 p.m. at the Point Dume Club, and are of specific interest to Malibu gardens.

Next Speaker: Dave Egbert comes from Big Sur, "Firesafe and Waterwise" for cottage gardens.

Call Shirley Feron at 310-457-8494

Jeff Hronek
H

Hardwood Floors

- New Installations
- Refinishing
- Repairs
- State Cont. Lic. No. 608606

(310) 457-1414

www.HronekHardwoodFloors.com

James Whitmore: A Community Supporter Who Happened to Be an Actor

■ Longtime Resident's Illustrious Career Spanned Decades and Featured Great Array of Roles

A longtime Malibu resident and prominent supporter of the community, actor James Whitmore passed away last Friday leaving a legacy of 60 years worth of acting on stage, in films and on television.

"James continued to be involved with the community," said Walt Keller, a friend of Whitmore's and the first mayor of the City of Malibu. "He was one of a group of movie people who always supported our city, not just cityhood, and we're losing them, unfortunately."

Back in 1990 during the election for the incorporation of Malibu, Whitmore was a backer of cityhood and included his name on "Vote Yes On 'Y'" ads, as well as took out advertising to support candidates who were elected to the first city council.

Whitmore was native to New York and served in the Marine Corps during World War II. He began his acting career in the late 1940s in New Hampshire.

He is well known for his portrayals in the 1970s of American icons Will Rogers, Harry Truman and Theodore Roosevelt about whom he put on one-man shows on stage.

The actor won a Golden Globe and was nominated for an Oscar for his performance in the 1949 World War II film, "Battleground."

He was also nominated for a Golden Globe and a

Legacy Park

(Continued from page 3) impermissibly piecemeals the Legacy Park project to avoid the required California Environmental Quality Act analysis, and that the EIR fails to analyze significant environmental impacts from the project. It also contends the revised Final EIR fails to adequately analyze cumulative hydrology impacts.

The appellants also extensively cite how the EIR fails to respond to specific comments.

"The Legacy Park EIR falls significantly short of the requirements of CEQA. Consequently, the planning commission's resolution No. 09-11 certifying the EIR violates CEQA," wrote the appellants in their conclusion.

BY BILL KOENEKER

Best Actor Oscar for his portrayal of Harry Truman in the 1975 film version of his one-man show called "Give 'em Hell, Harry!"

Recently, Whitmore won an Emmy for his three-episode performance as Raymond Oz on the television show, "The Prac-

tice." He appeared in episodes from 1997 to 1999.

Whitmore portrayed elderly convict and prison librarian Brooks Hatlen in the Academy Award-nominated 1994 film "The Shawshank Redemption."

He was also later known to many as the face of the

Miracle-Gro plant food TV commercials, a product he reportedly used when he worked in his own garden.

Whitmore died of lung cancer at his Malibu home at the age of 87. According to media reports, his son Steve Whitmore said his father was diagnosed with

the disease a week before Thanksgiving. He leaves behind a legacy of nearly 150 different character portrayals, many of them still indelibly imprinted on the minds of moviegoers.

In the little over two months between Whitmore's learning of his ill-

ness and his death, there was no public word on the state of his health.

"I didn't know he was ill," Keller said. "I find it very sad to hear about it. He was a good friend and neighbor to myself and the City of Malibu."

BY NICOLE KLIEST

malibu country mart™
www.malibucountrymart.com shop. play. dine.

the malibu community gathering place

over 65 unique shops, galleries, & restaurants

new at the malibu country mart!

- 7 for All Mankind
- Canvas Boutique & Gallery
- Earnest Sewn
- John Varvatos
- M. Fredric
- M·A·C Cosmetics
- Madison Gallery
- Naked Apparel
- Sigerson Morrison
- Traditional Jewelers
- Tylie Malibu

DoINGS

News Around Town...



GATHERING—Former Optimist president Anne Payne hosted a dinner last week. Among the attendees was Judge John Merrick, pictured above, right with current Optimists president Al Cowart.



KUDOS—Above, Malibu Chamber of Commerce CEO Rebekah Evans accepts her certificate of graduation for completing the three-year program through the Western Association of Chamber Executives.

* * *

Several Malibu High students were winners in the PTA 33rd District Reflections Contest.

Middle School

Hayley Haag, dance choreog-

raphy-second place; Natalie Kaufman, literature-first place.

High School

Jenny Pellegrini, music composition-first place; Katie Rollins, photography-

* * *

third place; Sara Mohr, literature-Honorable Mention Pellegrini and Kaufman's first place entries will go on to the California PTA State level of the competition.



HOORAY—Malibuite James (Jamie) Andes Jacobson graduated from Brigham Young University-Hawaii last December where he received a Bachelor of Science degree in exercise and sport science—health and wellness. He attended Juan Cabrillo Elementary School and graduated from Malibu High in 2003. While at BYU-Hawaii, he was an All-American water polo player and is now coaching a high school girls water polo team in Mililani on Oahu.

* * *

Malibu High School senior Sean Conrad has been accepted into Princeton University.



RECOGNITION—Tommy Chong, left, was on hand to meet his friend Malibu resident Cheech Marin last Saturday evening when Marin was honored by the California Rural Lawyers Association. The duo formed the comedy team of Cheech and Chong and released many successful albums as well as films, in the 1970s and '80s including "Up in Smoke" and "Cheech and Chong's Next Movie." They split in the late 1980s and recently reunited and are in the middle of a comedy tour.

Dianne Bates

'Seussical' Coming to Malibu High



AWAY WE GO—The Middle School Theatre Department at Malibu High will bring the stories of Dr. Seuss to life in "Seussical—the Musical," Thursday, Feb. 19 through Saturday, Feb. 21 at 7 p.m., and Sunday, Feb. 22 at 2 p.m., at the school, 30215 Morning View Drive. Conceived by Tony winners Lynn Ahrens, Stephen Flaherty and Eric Idle (of "Monty Python" fame), "Seussical" is a musical adaptation of the books of Theodore Geisel, AKA Dr. Seuss. With the Cat in the Hat as guide, the audience follows young Jojo as his imagination carries him into the whimsical world of his favorite childhood stories with classic Seussian characters like Horton the elephant, Gertrude McFuzz, Mayzie LaBird, and the Whos of Whoville. Directed by Brigette Leonard, the production features a cast of 22 middle-school singers and dancers. Pictured above are Peri Lapidus as The Cat in the Hat and Skylar Steinberg as Horton. Reserved seats for "Seussical" are \$15 for adults and \$10 for students/seniors, and can be purchased in advance on the school's website, <http://malibuhigh.smmusd.org>. For further information, call Malibu High School at 310-457-6801.

*The sun did not shine. It was too wet to play.
So we sat in the house all that cold, cold, wet day.
I sat there with Sally. We sat there, we two.
And I said, "How I wish we had something to do!"*

*Then I looked at the date, and I said, "Oh! My! My!
Let's hurry on over to Malibu High!
The middle school kids are presenting a musical.
It's sunny, and funny: the title is 'Seussical!'"*

*We'll see Horton the elephant, Gertrude McFuzz,
Jojo of Whoville, the Wickersham Bros,
And Yertle the Turtle: and not only that,
It features that rascal the Cat in the Hat!"*

*So, come have some fun! Come and join in the queue
On Feb. nineteen, twenty, twenty-one, twenty-two.
Thurs., Friday, and Sat, curtain's 7 each day:
And Sunday's a 2 p.m. matinee.*

*Our parents will pay fifteen bucks to get in.
For youngsters and oldsters, the price is just ten.
It's sure to sell out, 'cause the show is so fine:
You'd better be smart—buy your tickets online!*

* * *

Do you have or know of an upcoming event, or one that has happened recently to let readers know about? Let us help you spread the word to all your friends and neighbors. Submit items by Friday to Doings at the Malibu Surfside News, P.O. Box 903, Malibu, CA 90265, send by fax to 310-457-9908, or email us at news@malibusurfsidenews.com.

BY ROBBY MAZZA

Surplus Funds from Campaign Given Back to Contributors

In an era when state lawmakers are using campaign funds for trips to Hawaii, the state is issuing IOUs, consumers are left holding the bag for bankrupt companies, and the entire world is now accustomed to hearing about giant deficits and losses, it might come as a pleasant shock to learn a former candidate is issuing refunds to his supporters from his campaign chest.

Mark Bernsley, who took an accounting of his modest war chest after his failed bid for a state Assembly seat in the 41st District, which includes Malibu, could have taken several actions after learning he had surplus funds left over from his campaign.

"I see the surplus money as yours," wrote Bernsley in a letter to his contributors. In the missive, the Republican challenger said he did not want to spend money he did not have or feel a need to spend more than was necessary during the campaign. As a result, there remains a small surplus. "Some have asked whether spending the balance of the funds would have changed the outcome. I am confident the answer is 'no.' It was a tough year to be a Republican," added the Woodland Hills resident, who said he raised a modest amount of money about \$6000.

He could have rolled the money into another cam-

campaign or given it to charity. Instead, he returned a pro rata portion of the surplus funds to his contributors with the message, "the decision as to where and how it should be spent should be yours likewise."

Bernsley, who said that more than 60 percent of his contributions came from

Democrats and would not rule out another race, but for another seat, boasted that he had one of the lowest, if not the lowest, cost per percentage point spends.

When asked if a refund had ever been done before, Bernsley laughed and said, "It is rare, but it has been done."

**Give Blood.
Give Life.**



**American
Red Cross**

Colony Chevron Demolition Scrutinized by ERB

Plans to demolish the old Colony Chevron station including taking out all structures, piping, pumps, hardscape and signage and the removal of four 10,000 gallon underground gasoline and diesel storage tanks, were reviewed recently by the City of Malibu's Environmental Review Board.

No new construction is planned at this time and planners indicated an initial study is required to assess potential environmental impacts associated with underground storage tank removal.

The nearly half-acre property that is triangle-shaped has been on the market for sale for \$4.6 million. The commercial property is being marketed for its redevelopment potential.

The ERB is charged with reviewing the project and providing recommendations to the planning manager.

City Biologist Dave Crawford recommended the applicant submit copies of all the latest studies and reports, including moni-

toring reports submitted to the Regional Water Quality Control Board with plume maps to the planning division staff prior to any planning commission consideration.

Crawford went on to say that the information should be circulated to the members of the ERB and reviewed by the planning division staff and the city's hazardous materials consultant.

Suzanne Goode, an ERB member who is a State Parks ecologist, recommended that following demolition and site grading activities, native vegetation seed should be spread around the site to create a ground cover while the property is left vacant.

The city's fuel modification specialist, Anthony Shafer, recommended that a vacuum truck be available onsite to immediately pump out any visible free product during excavation of the underground gasoline and diesel storage tanks due to their proximity to the water table.

BY BILL KOENEKER

Pot Pharmacy Permit Granted by Planning Commission

A request for the city's first pot pharmacy permit was granted last week, when the Malibu Planning Commission gave the OK for the entitlement.

The planning panel's formal action was, on a 4-1 vote with Commissioner Regan Schaar dissenting, to grant a Conditional Use Permit for the operation of a medical marijuana dispensary.

Last summer, the city council adopted an ordinance to allow two dispensaries in the city as a conditionally permitted use in all commercial zones.

Previously, the city had enacted a moratorium after it discovered there were two dispensaries already operating, but Malibu had no zoning regulations to deal with the stores.

In contrast to those hearings and meetings about municipal action, at last week's hearing there were no speakers, nor, according to the staff, were there any correspondence or complaints from the public.

The owners of PCH Collective successfully sought the CUP to allow for the operations of the pot

pharmacy, which has been doing business in Malibu for several years.

When Chair Joan House said she visited the site, Commissioner Jeff Jennings quipped, "Did you score any?"

Regaining seriousness, House, who noted that, given Schaar's previous complaints about another local dispensary, she wanted to see the operations up close.

"I was impressed by the collective. There was no smell. It was very neat, very tidy. No inhaling on the premises. You buy and leave. It is used like a pharmacy," she added.

The panel was about to vote on the matter when Commissioner Ed Gillespie asked to speak.

He said he wanted to know about the other dispensary in town, saying he had looked at its Web site, where the operator advertised about an on-site smoking lounge and a free sample for visitors. Those activities violate the city's rules.

"I have no first hand knowledge [about those activities]," said Gillespie, who asked for the status of

the other dispensary known as Green Angel.

Commissioners were told the operators of Green Angel were in the process of applying for a CUP.

Gillespie said he also wanted to know if the dispensaries were against federal law. Assistant City Attorney Greg Kovacevich answered, "Yes, but not exactly. They could be seized by the feds. The violation is for possession of a controlled substance. I don't know that will happen with this administration."

Earlier in the day, several dispensaries on the Westside were raided and all materials, including marijuana, money and other paraphernalia were seized, according to a Los Angeles Times story.

Gillespie, who said he supported the idea of folks being able to get the medicine they needed, said he wanted to know how controls could be tightened up.

Reading from an article in the Malibu Surfside News, Gillespie quoted how local law enforcement officials said it was easy even for teens to get documentation to obtain medi-

cal marijuana.

"To me this shows we need controls. My position is the people who need this, I'm for 100 percent. I'm still uncomfortable with the controls and how easy it is to get this," he said.

Commissioner John Mazza said he too visited the site and said while he was there an individual came in with a card that the operators verified by calling the doctor. Patients do not get prescriptions, but rather recommendations from physicians," he said.

"They made sure it was real and made sure the person and the doctor was real," added Mazza.

Mazza also said there were other safeguards that Malibu required that were not in effect in other jurisdictions.

The vote was taken, Schaar voted no, but made no comments during the meeting about her continued opposition.

The store claims it has patient records for over 1000 individuals who live within the 90265 zip code and employs 16 security cameras.

BY BILL KOENEKER

PEPPERDINE PRESENTS

HOMECOMING IS WHERE THE HEART IS: FEB. 13-15



Alumni return to Pepperdine for this weekend of Homecoming festivities. Join us Saturday for live entertainment, games, and food at the tailgate party in Alumni Park leading up to the men's basketball game against University of San Diego at 5 p.m. This year's rally will include free In & Out burgers, the annual student lip sync competition, and the coronation of the Homecoming King and Queen. For a full listing of events, visit <http://seaver.pepperdine.edu/alumni/homecoming/>

Friday, Feb. 13, through Sunday, Feb. 15, Malibu campus Events are free and open to the public.

MORE EVENTS

Free Family Art Day

Join us for kid-friendly art projects and tours of the Weisman Museum.

Saturday, Feb. 14, 10 a.m. to 2 p.m.

The Gregg G. Juarez Palm Courtyard

Event is free and open to the public; for more information, call (310) 506-4851.

Celebrating Black History Month

Cynthia Nance, dean of Arkansas Law School, will speak.

Thursday, Feb. 19, 12:30-1:30 p.m.

School of Law, Malibu

Event is free and open to the public

For more information, call (310) 506-6567.

Left Turn: The Rise of the Left in Latin America

Luisa Blanco, economics professor at the School of Public Policy, will speak on politics in Latin America.

Thursday, Feb. 26, 12:10 - 1 p.m.

SPP Room 175, Malibu

Event is free and open to the public

For more information, call (310) 506-7497.

UPCOMING WAVES ATHLETIC ACTION IN MALIBU

www.pepperdinesports.com

Men's Basketball

Santa Clara: Thursday, Feb. 12, 7:30 p.m.

San Diego: Saturday, Feb. 14, 5 p.m.

Firestone Fieldhouse

Women's Basketball

Portland: Thursday, Feb. 19, 7 p.m.

Gonzaga: Saturday, Feb. 21, 2 p.m.

Firestone Fieldhouse

Women's Tennis

New Mexico: Sunday, Feb. 15, 1 p.m.

UNLV: Saturday, Feb. 28, 11 a.m.

Ralphs-Straus Tennis Center

Men's Volleyball

UCLA: Wednesday, Feb. 18, 7 p.m.

Cal State Northridge: Wednesday, Feb. 25, 7 p.m.

Firestone Fieldhouse

Men's Baseball HOME OPENER

Cal State Northridge: Friday, Feb. 20, 2 p.m.

Eddy D. Field Stadium

Frederick R. Weisman Museum of Art 310.506.4851
 Smothers Theatre Box Office 310.506.4522
 Athletics Ticket Info 310.506.4935
 Public Relations and News 310.506.4138
 Crest Associates 310.506.4745
 General Info 310.506.4000

PEPPERDINE UNIVERSITY

24255 Pacific Coast Highway
 Malibu, Ca 90263
www.pepperdine.edu

ENCORE
 70% OFF
 SALE
 ON
 NOW

MALIBU COUNTRY MART
 23410 Civic Center Way

A Matter of PUBLIC RECORD

NOTICE OF APPLICATION TO SELL ALCOHOLIC BEVERAGES

Date of Filing Application: **February 3, 2009**

To Whom It May Concern:

The Name(s) of the Applicants(s) is/are:

BARREL MALIBU LLC

The applicants listed above are applying to the Department of Alcoholic Beverage Control to sell alcoholic beverages at:

**2315 MALIBU RD
MALIBU, CA 90265-4602**

Type of license(s) Applied for:

41 - ON-SALE BEER AND WINE- EATING PLACE

Publish Date: February 5, 12, 19, 2009

NOTICE OF AGREEMENT TO PURCHASE
TAX-DEFAULTED PROPERTY FOR DELINQUENT TAXES
AGREEMENT NO. 2574

NOTICE IS HEREBY GIVEN, in accordance with the provisions of Division 1, Part 6, Chapter 8 of the California Revenue and Taxation Code (and the written authorization of the State Controller) that an agreement, a copy of which is on file in the office of the Board of Supervisors of Los Angeles County, has been made between said Board of Supervisors and the Mountains Recreation & Conservation Authority approved by the State Controller, whereby Los Angeles County will sell to the Mountains Recreation & Conservation Authority under the terms set forth in said agreement, all of the real properties hereinafter described which are subject to the Power of Sale by the Tax Collector.

That unless sooner redeemed, the undersigned Treasurer and Tax Collector pursuant to said agreement will not less than 21 days after the date of the first publication of this notice as required by law, sell said properties to the Mountains Recreation & Conservation Authority. If the properties are sold, parties of interest, as defined in Section 4675 of the California Revenue and Taxation Code, have a right to file a claim with the county for any proceeds from the sale, which are in excess of the liens and costs required to be paid from the proceeds. If excess proceeds result from the sale, notice will be given to parties of interest, pursuant to law.

If redemption of the properties is not made according to law before the properties are sold, the right of redemption will cease. For information as to the amount necessary to redeem, apply to Mark J. Saladino, Los Angeles County Treasurer and Tax Collector, 225 North Hill Street, Los Angeles, California 90012. The real properties covered by said Agreement are located in the County of Los Angeles, State of California, and are described as follows, to wit:

4444-024-010

ASSESSED TO: NYGARD, MARK L

TR=6915 EX OF ST LOT 138 AND NE 122.50 FT MEASURED AT R/A TO NE LINE LOT 237

4444-026-020

ASSESSED TO: WEST, IRA AND WEST, NOLAND

*TR=6915 LOT 167

DATED THIS 2ND DAY OF FEBRUARY, 2009

MARK J. SALADINO
TREASURER AND TAX COLLECTOR

Malibu Surfside News
CN812970 2574 Feb 12, 19, 26, 2009

**PUBLIC NOTICE – FILE NO. 090144606
FICTITIOUS BUSINESS
NAME STATEMENT**

The following person is doing business as:

Malibu Greetings
30765 PCH #149, Malibu, CA 90265

Judd Stark
30765 PCH #149
Malibu, CA 90265

This business is conducted by an individual.

The Registrant commenced to transact business under the fictitious business name or names listed above on February 1, 2009.

This statement was filed with the County Clerk of Los Angeles County on February 3, 2009.

I declare that all information in this statement is true and correct. (A registrant who

NOTICE OF PUBLIC HEARING CITY OF MALIBU CITY COUNCIL

The Malibu City Council will hold a public hearing on **Monday, March 9, 2009, at 6:30 p.m. in the Council Chambers, Malibu City Hall, 23815 Stuart Ranch Road, Malibu, CA, for the project identified below.**

MALIBU LEGACY PARK APPEAL NO. 09-001 – The Appellants, as listed below, filed an appeal of the Planning Commission's adoption of Planning Commission Resolution No. 08-67, certifying Final Environmental Impact Report No. 07-002, adopting the Mitigation Monitoring and Reporting Program, and approving Coastal Development Permit No. 07-132, Variance No. 08-033, and Conditional Use Permit Nos. 08-007 and 08-018 to allow the construction of a public park, linear park and stormwater treatment system components, on a 15 acre site within the Civic Center Area, including grading, accessory structures, a bridge, master sign program, street improvements, parking spaces, habitat restoration and trails for the parcel located at 23500 Civic Center Way. The grounds for the appeal are: 1) the Planning Commission's findings or conditions are not supported by substantial evidence or the Planning Commission's decision is not supported by the findings; and 2) the decision was contrary to law.

APPELLANTS:

Santa Monica Baykeeper, Tatiana Gaur; Malibu Surfing Association, Michael Blum, President; Surfrider Foundation, Angela Howe, Legal Manager; Heal the Bay, Mark Gold, President
February 2, 2009

APPEAL FILED:

APPLICATION FILING DATE: January 15, 2007

APPLICANT:

CITY OF MALIBU
CITY OF MALIBU
23500 Civic Center Way, within the coastal zone

ZONING (Park):

Commercial Visitor Serving-1 (CV-1)
Community Commercial (CC) and Institutional (I)

APNs (Park):

4458-020-903 and 4458-020-902
4458-022-001, 4458-022-022,
4458-022-023, 4458-022-904 and
4458-022-011

APNs (Linear Park):

Stephanie Danner, Senior Planner
310-456-2489, extension 276

CITY PLANNER:

An EIR was prepared in accordance with the California Environmental Quality Act (CEQA) and CEQA Guidelines. On May 29, 2008, the Draft EIR (DEIR) was circulated for a 45-day public review period, May 29, 2008 through July 14, 2008. The Governor's Office of Planning and Research distributed the DEIR to responsible agencies for a 45-day public review period, May 27, 2008 through July 10, 2008 (SCH #2007111092).

A written staff report will be available at or before the hearing. Following an oral staff report at the beginning of the hearing, the appellants may be given up to 15 minutes to make a presentation. Any amount of that time may be saved for rebuttal. All other persons wishing to address the Council will be provided up to three minutes to address the Council. These time limits may be changed at the discretion of the Council. At the conclusion of the testimony, the Council will deliberate and its decision will be memorialized in a written resolution.

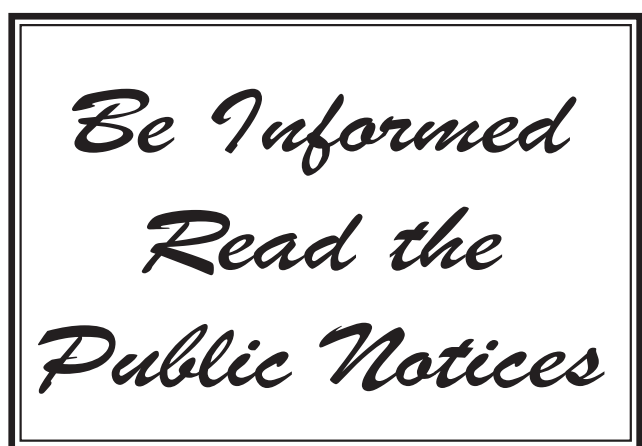
Copies of all related documents are available for review at City Hall during regular business hours. Written comments may be presented to the City Council at any time prior to the close of the public hearing.

IF YOU CHALLENGE THE CITY'S ACTION IN COURT, YOU MAY BE LIMITED TO RAISING ONLY THOSE ISSUES YOU OR SOMEONE ELSE RAISED AT THE PUBLIC HEARING DESCRIBED IN THIS NOTICE, OR IN WRITTEN CORRESPONDENCE DELIVERED TO THE CITY, AT OR PRIOR TO THE PUBLIC HEARING.

If there are any questions regarding this notice, please contact Stephanie Danner, Senior Planner, at 310-456-2489, extension 276.

STACEY LUNDIN, Ph.D., AICP
Planning Manager

Publish Date: February 12, 2009



LETTERS

(Letters are continued from page 4)

ity-hungry lights will be attached to 80-foot poles that are taller than adjacent ridgelines thus obscuring whitewater and star-filled views shared by residents, hikers, equestrians and our children. It will have a permanent, detrimental effect on the fragile local eco-system, especially nighttime-foraging wildlife.

Consider this in a regulatory environment where local residents are not allowed to erect lighting for private tennis courts or have any other invasive lighting fixtures. The synthetic surface proposed for the athletic fields requires treatment with a number of sanitizing and maintenance chemicals, which can find their way into the ocean. The materials are also linked to dangerous multiple-drug resistant staph infections. For more information on these materials, visit www.synturf.org.

If this type of lighting and artificial field are approved by the Coastal Commission and the city, this represents a significant step towards the urbanization of the city in stark conflict with the City of Malibu's own official vision statement.

Marshall Thompson

TREE THEFT

Editor:

What kind of message are we sending to our children?

According to the Lost Hills Sheriff's Department in Agoura Hills, a criminal act took place at Malibu High School (Malibu, CA 90265) on Saturday, Jan. 31, 2009. Apparently, a person or persons hired a landscaping crew to remove 85 fifteen-gallon queen palm trees along the slopes surrounding the Boys and Girls Club and the physical education black top. The trees were planted over the Thanksgiving break. Shortly after, a group of neighboring homeowners expressed objection to the trees on the grounds of the potential impact to their view corridors and fire safety. After a meeting(s) between representatives of the Santa Monica Malibu Unified School District and neighborhood representatives, district representatives agreed to explore cost effective solutions to the neighbor's complaints, including relocating the trees or transferring the trees to another school in the district. Unfortunately, a landscaping crew was hired to remove the trees, without the permission of the district, and at this time no one knows where the trees are located. According to an eye witness, several men in an older pickup truck with wood panels along the sides of the flatbed spent several hours Saturday digging up all of the queen palms and carted them off in their truck(s). The loss to the district is estimated to be over \$10,000. A police report was filed by the district with the Lost Hills Sheriff's Department (310-456-6652) and the matter is under investigation.

Over the school e-network, a parent went as far as saying kudos to those who removed the trees. Does that mean that she is promoting and accepts any or all criminal acts? What kind of a message is this parent sending to her children, all students and the entire community? And to society at large?

What's also very troubling is the trees were planted by parent volunteers, as the district has limited funds available for landscaping. The group was founded by me years ago in an effort to transform MHS from its institutional appearance to a superior place to learn and work. Its mission statement is simple: "Beautify and make MHS a better place to work and learn." These volunteers are nothing but a hard working and unselfish group whose intentions were for the good of the children, the community and all visitors to Malibu High. In addition, surrounding home owners have also benefited from these efforts as they no longer look at unkempt grounds filled with weeds, trash and dirt as they enter and exit their homes!

The issue of view corridor protection and fire safety is the subject of much debate. But the simple fact is that district representatives had agreed to try to attempt to resolve the complaints of the neighbors but were not given the time to do so. The matter was resolved it appears with the use of force and with no regard for laws or ethics or community. And definitely without regard for the efforts of all the parent volunteers and those whose dollars were donated to the cause of beautifying the grounds at Malibu High School.

I encourage anyone having any information regarding such a heinous act to call the Lost Hills Sheriff's department at 310-456-6652. In addition, if anyone is interested in making a donation to replace the landscaping (of course with plants that are acceptable to the neighbors) they can send checks to MHS, 30215 Morning View Drive, Malibu, CA, 90265, to the attention of: The Shark Fund, with "Landscaping" in the memo line.

Mary Hughes-O'Leary

(Letters are continued on page 14)

Council Says Yes to Outdoor Smoking Ban

The Malibu City Council, on a 4-1 vote with Mayor Andy Stern dissenting, agreed to direct the staff to prepare a smoking ban in many of Malibu's outdoor venues.

The council's action was prompted by a recent state of tobacco control report card that gave the city an "F" grade.

Councilmember Pamela Conley Ulich brought the matter before her colleagues to consider a smoking ban much like in other cities such as Glendale, which scored an "A" grade.

After much debate about the details, the council agreed to have the staff draft an ordinance that would outlaw smoking in outdoor

dining areas and outdoor public events with the proviso that a smoking outpost be established. The smoking area was defined as a site away from the public where smokers could congregate to puff away.

"We should be able to accommodate those weak-willed addicts and give them a place to smoke," said Councilmember Sharon Barovsky, who is a smoker.

Currently, the city has smoke-free outdoor areas in entryways, meaning around public buildings and recreation areas, such as the city's ban on smoking at the beach.

Stern did not elaborate on his dissenting vote.

BY BILL KOENEKER

Local Schools Get Good Grades



REPORT CARD—A presentation on "The State of Our Schools" sponsored by the Santa Monica Council of PTAs was recently held in Malibu. Shown clockwise from upper left, Webster principal Phil Cott, Stephen Carrol of RAND, PTA president Rebecca Kennerly and Malibu Councilmember Pamela Conley Ulich attend the event; Board of Education president Ralph Mechur, Superintendent Tim Cuneo and vice president Barry Snell were district representatives; the Webster Elementary School library was the site of the event. MSN Photos/Frank Lamonea

Stay up to date with all the local news at www.malibusurfsidenews.com

Wildlife Response Training and Recruitment Campaign

Rescuing wild animals requires skills very different from those used in handling domestic animals. Our unique educational program is designed to help communities develop and strengthen their corps of specially trained individuals who may be called upon to rescue injured wildlife—be there one or thousands of animals in need.



This program is being offered by International Bird Rescue Research Center, world leaders in the recovery and care of oiled wildlife and aquatic birds.

Wildlife Emergency Response I

This comprehensive 8-hr class explores the fundamentals of wildlife rescue - from the phone to the field, covering laws and regulations, disaster response, human and animal safety, capture strategies, restraint techniques, first aid, and public relations. Slides and video enhance the learning experience and students will have the chance to practice capture techniques with equipment during hands-on exercises. While participants are provided direction on proper handling of wildlife, completion of the class will not exempt them from regulations that govern possession of oiled or non-oiled native wildlife. Classes are from 8:00 A.M. to 5:00 P.M.

http://www.ibrrc.org/bird_rescue_training.html or rebecca@ibrrc.org or 831-840-3896

<p>Malibu</p> <p>February 21</p> <p>Bluffs Park Michael Landon Center 24250 PCH</p>	<p>Class Fee \$50.</p> <p>PRE-REGISTRATION REQUIRED</p>
-----------------------------------------------------------------------------------------------------------	-----------------------------------------------------------------------

SIGN UP NOW!



Say it with flowers

Let us take care of your Valentine's Day order

Cosentino's 310-456-6707
Malibu Florist 310-465-1858

BERNARD

Thurs., Feb. 12

● The Malibu Meditation Group meets each Thursday at 7:30 p.m. in a private residence. FI: 310-456-3591.

● Alcoholics Anonymous meets each Thursday at 8 p.m. at Malibu Methodist Church, 30128 Morning View Dr. FI: 888-684-6444.

Fri., Feb. 13

● Gan Malibu Early Childhood Center has Mommy and Me classes each Friday from 9:30-10:30 at Chabad of Malibu, 22931 PCH. FI: 310-456-6588.

● The Malibu Senior Club meets the second Friday of each month in the Point Dume Mobile Home Park Clubhouse. The guest speaker will be Dr. Gregory Frazer, an audiologist who is board certified by the American Board of Audiology and Hearing Instrument Sciences and American Speech and Hearing Association, who was a UCLA clinic instructor for the department of head and neck surgery. The program begins at 1 p.m. FI: 310-457-7086.

● Cornucopia is sponsoring "Simply a Matter of Taste," cooking classes conducted by Chef Diana Temple for high school students from 1:30-4 p.m. each Friday through Feb. 27. The focus is on world fusion cuisine with students cooking Turkish, Asian, Italian and vegetarian food. FI: 310-457-9107.

● The Malibu Stage Co. is presenting "Rabbit Hole," David Lindsay Abaire's Pulitzer Prize-winning play each weekend through March. Showtimes for all performances are: Fridays and Saturdays, 8 p.m. and Sundays, 5 p.m. Tickets are \$20 each. FI: 310-589-1998 or visit www.malibustage-company.org.

Sat., Feb. 14

● The Allied Artists of the Santa Monica Mountains and Seashore, Inc. is having a paint-out at Leo Carrillo State Beach. Meet in large parking area after Ranger Station at 9:30 a.m. Bring lunch, art supplies and cash for parking. FI: 310-338-0333 or allied-artists.com.

● The Malibu Seventh Day Adventist Church meets Saturdays for worship services at Webster Elementary School, 3601 Winter Canyon Rd. at 9:30 a.m. FI: 818-458-8884.

● The Malibu Garden Center, located at PCH and Trancas, is holding a free Valentine's day event from 10a.m.-4 p.m. Attendees will make Valentines as well as "hunting for secret Valentines in the garden." FI: 310-457-3981.

● Pet adoptions are held every Saturday and Sunday in front of Pacific Coast Pets, 23705 Malibu Rd., from 12-

4 p.m. FI: 310-271-6096, ext. 27.

● Pepperdine University Center of the Arts is presenting "Junie B. Jones," a new musical based on author Barbara Parks' children's books. There will be two shows, at 11 a.m. and 1 p.m. in the Smothers Theatre on the Pepperdine campus. Admission is \$15 for adults and \$10 for children. FI and tickets. FI: 310-506-4522 or <http://arts.pepperdine.edu>.

● The Santa Monica Pier Aquarium, is holding "Whale of a Weekend" at Heal the Bay's Marine Science Center, 1600 Ocean Front Walk in Santa Monica from 12:30-5 p.m. through Sun., Feb. 15. The event will celebrate whale migration with activities for adults and children. Admission is free for children 12 and under accompanied by an adult, a \$5 donation is suggested for those 13 or older with a minimum \$2 donation. FI: 310-393-6149 or www.heal-thebay.org/smpa.

Sun., Feb. 15

● The California Wildlife Center is holding training classes from 9 a.m.-3 p.m. at their facility, 20626 Piuma Rd. in Calabasas. The cost is \$50 for membership, \$10 for materials and lunch is included. FI: volunteer@californiawildlifecenter.org.

Wed., Feb. 18

● Actor auditions for Malibu Stage Repertory Company's next production "Looking for Normal" will be held at 11 a.m. at the Malibu Stage Co. theater, 29243 PCH. Other days and times are available by request. FI and appointments: 310-292-0347.

● Docent-led tours of the Adamson House and Gardens take place Wednesday through Saturday from 11 a.m. until 2 p.m. The tours are \$5 per person and no reservations are needed. Group tours take place on Tuesdays and reservations can be made by calling 310-456-8432.

Thurs., Feb. 19

● The Middle School Theatre Dept. at Malibu High is presenting "Seussical: The Musical" each night through Sat., Feb. 21 at 7 p.m. and on Sun., Feb. 22 at 2 p.m. at the school, 30215 Morning View Dr. Tickets are \$15 for adults and \$10 for students/seniors, and can be purchased at <http://malibuhigh.smmusd.org>. FI: 310-457-6801.

● The Malibu Township Council meets on the third Thursday of each month at the Malibu Jewish Center and Synagogue, 24855 PCH at 7:30 p.m. The meetings are open to the public. FI: malibutownshipcouncil.org.

Sat., Feb. 21

● The International Bird Rescue Center is holding a

class in the fundamentals of wildlife rescue from 8 a.m.-5 p.m. at Bluffs Park. The class will cover the fundamentals of wildlife rescue, including laws and regulations, disaster response, capture strategies, restraint techniques and first aid. The fee is \$50. FI and to sign up: www.ibrrc.org/bird_rescue_training.html or rebecca@ibrrc.org or 831-840-3896.

● The Pepperdine University Fine Arts Division is holding a classical guitar master class with renowned guitarist Christopher Parkening from 2-6 p.m. in Raitt Recital Hall, 24255 PCH. Auditor's tickets priced at \$25 for the public, \$10 for Pepperdine students and \$12.50 for Pepperdine faculty and staff will be sold at the door. FI: 310-506-4462.

● There is a free showing of video footage of temple ceremonies, gamelan and sacred dance from Bali along with excerpts from the Ubud Sacred Drum Festival 2008, narrated by Steffi Buffington. Following the presentation all are welcome to participate in the drum circle with the Agape Drum Ministry. The event will take place at 3 p.m. at the Olandar Foundation, 6032 Philips Ave. in Malibu. FI: 626-799-4795.

● The Malibu Young Professionals, a committee of the Malibu Chamber of Commerce, is holding Casino Night at 6 p.m. at the Malibu Performing Arts Center, 23825 Stuart Ranch Rd. There will be entertainment, refreshments, card tricks and casino tables. Admission is \$100 for Chamber members and \$125 for non-members. FI: 310-456-9025 or malibuyoungprofessionals.malibu.org.

Mon., Feb. 23

● Angels at Risk, a parent teen support group, is holding a meeting for the community from 6-7:30 p.m. in the Malibu High School library, 30215 Morning View Dr. FI: 310-457-1421 or www.angelsatrisk.com.

Tues., Feb. 24

● Clickers and Flickers is holding its monthly photography networking dinner from 6:30-10 p.m. at The Castaway, 1250 Harvard Rd. in Burbank. The guest speaker will be Peggy Fontenot, an award-winning photographer of American Indian Heritage and co-founder of "America's Veteran." Admission is \$50 each. FI and reservations: 626-794-7447 or www.clickersandflickers.com.

Wed., Feb. 25

● Juan Cabrillo Elementary School, 30237 Morning View Dr., is holding its

annual Kindergarten Roundup from 8:30-11 a.m. for school age children—age five by Dec. 2, 2009 and their parents. It is the first step in the enrollment process. RSVP by Feb. 6. Parents needing to enroll children in first through fifth grades for fall should call for pre-registration information. FI and RSVP: 310-457-0360, ext. 130 or 131.

Sun., March 1

● The First Church of Christ Scientist, 28635 PCH, is holding a talk by international speaker Michael Pabst on "Prayer, Healing and You" at 2 p.m. The talk will be followed by a question and answer period. Free admission and childcare. FI: 310-457-7767.

Tues., March 3

● Webster Elementary School, 3602 Winter Canyon Rd., is holding a Kindergarten Roundup at 9 a.m. Parents of children who will be five years old by Dec. 2, 2009, are encouraged to attend. The morning will consist of question and answers with the school principal and the PTA, a tour of the school and light refreshments. FI: 310-456-6494.

Wed., March 4

● The Malibu Garden Club is holding its monthly meeting at 7:30 p.m. at the Pt. Dume Mobile Home Park Clubhouse, 29500 Heathercliff Rd. The guest speaker will be Elizabeth Schwartz of the Theodore Payne Foundation. FI: 310-455-1558.

● Proposed calendar listings must be submitted to The News as far in advance of event as possible. Items for free listings will be screened for community-wide interest and are subject to space and lead time limitations. If you would like to list a commercial event, contact the advertising department for information about charges. Items must include an FI, or "For Information" number, whenever possible. Submit items for consideration in writing (no listings will be accepted over the telephone) by Friday to: MSN Calendar, P.O. Box 947, Malibu, CA 90265 or FAX listing information to 310-457-9908 or by email to news@malibusurfsidenews.com.

Malibu Cinemas
HOLLYWOOD THEATERS

All of the amenities and none of the hassle.

3822 Cross Creek Road • 310-317-4531 • 310-456-6990
SPECIAL ADMISSION PRICES FOR STUDENTS, SENIORS & CHILDREN
BARGAIN MATINEE DAILY - FIRST SHOW ONLY

RESERVE SEATS ONLINE AT www.gohollywood.com Our theaters feature

Gran Torino (R)	Confessions of a Shopaholic (PG)
<u>Fri-Thur</u> 4:00, 7:00, 9:45 <u>Sat, Sun</u> 1:00, 4:00, 7:00, 9:45	<u>Fri-Thur</u> 4:15, 7:15, 9:45 <u>Sat, Sun</u> 1:15, 4:15, 7:15, 9:45

www.gohollywood.com 2/13/09-2/19/09

Malibu Religious Services Times

St. Aidan's Episcopal Church	310-457-7966
www.staidanschurch.org	
28211 Pacific Coast Highway (Rev. Joyce Stickney) 8 a.m. Holy Eucharist, 10 a.m. Holy Eucharist, music, choir, Sunday School and childcare (10-11 a.m.).	
Our Lady of Malibu Catholic Church	310-456-2361
3625 Winter Canyon Road (Rev. William F. Kerze) Sat. 5 p.m. Sun. 7, 8, 10:30 and 12:30	
Malibu United Methodist Church	310-457-7505
30128 Morning View Drive (Pastor Andrew Mattick) Adult & Youth classes, 10:30 Contemp. Worship & Children's Class	
Malibu Presbyterian Church	310-456-1611
3324 S. Malibu Canyon Road (Rev. Greg Hughes, Pastor) Sun. 9:30 a.m. Trad./Contemp. Blended, 11 a.m. Contemp. Nursery thru 5th grade Sunday School at both services.	
First Church of Christ, Scientist	310-457-7767
www.tfccs.com 28635 W. Pacific Coast Highway 10 Church & Sunday School, Wed. 8 p.m.	
University Church of Christ	310-506-4504
24255 Pacific Coast Highway (Minister, Ken Durham) Our fall worship schedule is subject to change so please consult our church web site at http://www.universitychurchofchrist.us for the current schedule.	
Chabad of Malibu	310-456-6588
22933 Pacific Coast Hwy. (Rabbi Levi Cunin) Fri. 6:30 p.m., Saturday 10 a.m. followed by lunch	
Pacific Palisades Presbyterian Church	310-454-0366
15821 Sunset Blvd. (Rev. K. Edward Brandt, D. Min.) Sun. 9 a.m. Contemp. 10:30 a.m. Traditional Sunday School & childcare both services www.palipres.org	
Calvary Chapel Malibu	310-589-WORD(9673)
Sun. 10 a.m. at Juan Cabrillo School Wed. 7 p.m., Bible Study at 6136 Tapia Dr.	

Trancas Riders and Ropers Celebrates 57 Years



BIG SMILES—Members of the Compton Jr. Posse attended the banquet held last weekend. Pictured above, front row, left to right: Khalia, Khanya and Khafra Akbar; back row: Nathan Bonner, Mayisha Akbar, founder of the Jr. Posse, Joseph Bonner and Kathy Clark.

MSN Photos/Frank Lamonea



BIG NIGHT—There were lots of winners at Trancas Riders and Ropers 57th Annual Awards Banquet that was held last Saturday night. Pictured above, left, is Abby Blackwood holding her first place ribbon for English riding and, at right, Jessica Young who placed first in English High Point.



ANTICIPATION—There was a sizable crowd at the banquet. They were all ears as the winners were announced.



HOORAY—Pictured above are Holiday Kriegel, Abby Blackwood, Kelsey Holms and William Hosjatie—the Shrimp Show winners, are all smiles.



BIG WIN—Scarlet Walker and her mother Judy Mora display her awards. She won seven championships, three reserved championship and was the overall champion in the jumper show series.



CELEBRATION—Longtime Malibuites and TR and R members Janet and Bob Kirby, historian Dale Smith, Millie Decker and Bonnie Decker enjoy another local tradition.

Sheriff's REPORT

The latest series of rain storms in and around Malibu has resulted in extreme rock slides, especially on Kanan Dume Road. Workers have been busy the past week trying to keep the roads open.

Because many of the key canyon roads are still experiencing sloughing, it

is important to be cautious while driving.

One must be alert for falling rocks and debris in dry weather as well as rainy, especially between storms.

Remember to drive defensively, obey all traffic signs and signals and concentrate on the road.

Plate

EARTHY CALIFORNIA CUISINE

NEW

All Natural
Organic
Healthy

NEW

Breakfast	7:30 – 11:00	Everyday
Lunch	11:00 – 2:30	Everyday
Dinner	5:00 – 9:00	Everyday

Saturday and Sunday Open the whole day
Eating Healthy should not be a Sacrifice

22601 Pacific Coast Highway • Malibu, CA 90265 • 310-317-6800

LETTERS

(Letters are continued from page 10)

MALIBU MATH

Editor:

This week, having read the local newspapers and watched our televised Planning Commission and City Council meetings to satisfy my occasional need for comic relief, I was brought to reflect on our educational system. I went to high school a long time ago (Unihi for those interested) when, if you paid attention, you could actually learn stuff. One thing you could learn was arithmetic which every so often comes in handy.

Take, for example, the current flap about Sweetwater Mesa. There a developer wants to grade a 220-foot high cut in a mountain slope to create six residential lots. So far so good—Malibu needs to increase its tax base. It is claimed that this project would require the excavation of 77,000 cubic yards of earth and 4500 truck loads to export it through posh residential Serra Retreat.

Right there the numbers sort of catch one's arithmetical eye, because the largest truck that could be used is a 10-wheeler, and 10-wheelers can carry only about seven cubic yards. Any earth-moving contractor, well at least any contractor not working for the developer, will tell you that when rock is excavated it undergoes "breakout" which means that the volume of rock in the ground is less than that same volume after it is excavated.

Depending on the kind of rock, breakout usually runs between five and twenty percent. This means that the total cubic yardage to be exported would not be 77,000 but rather between 80,850 and 92,400. Of course, the zinger is that the number of loaded truck trips needed would not be 4,500 but rather between 11,500 and 13,200, round numbers, multiplied by two for the empty return trips.

So much for the forgotten, if ever learned, discipline of arithmetic in Malibu.

Don Michael

CHANGE

Editor:

The world is changing again. In our short lifetimes, events

and non-events have connected in time, to bring us all to where we are today.

It has been a nose bleed dive competition by our world recently. Every person has been touched one way or another by the apparent retraction and collapse of our financial and environmental world. This is very interesting, especially since our personal makeup is such that we feel isolated in our own bodies and minds. We are the only ones that feel pain when injured. We're the only ones with the ability to feel injured because our bodies and minds are isolated in a shell and this shell, no matter how much empathy anyone else may have, is its own unit with its own functions and systems.

The other day, along with friends, I strolled at a popular area of Santa Monica, filled with shops, restaurants and theatres. There were people of all kinds. Most like me, were dressed warm and appeared showered and well cared for. At the same time, in the same place, the homeless, mentally ill and just plain down and out people walked and sat in their shells, showing deep signs of despair, yet isolated by their own shell. They were isolated by our apathy and self preservation and protection.

As I handed out token amounts of money to make myself feel less guilty for my relative fortune and be a part of some small help, a couple of people who were with me at that moment, told me that they felt nothing for these people, because "they should just get themselves up and out of their predicament." It was a deep and profound moment of epiphany for me that evening, that our isolation and disconnection, is self imposed by us in order to deny and protect us from a fundamental entanglement which we have and should sense with everything around us.

Everything is built from and on a foundation. This applies to all things. There is a science called quantum physics, which attempts to explain the most fundamental rules and construction of the universe. Our brains and thoughts, bodies and all matter follow these rules. There is a connection between these fundamental components, called entanglement.

Entanglement, in the world of quantum physics, is a paradox of unprecedented permutations. Its yet easily explained in layman's terms:

We're built from the most basic building blocks, some of which are atoms. as you may have learned in school. These

(Letters are continued on page 17)

MALIBU PROFESSIONAL and BUSINESS GUIDE

PROFESSIONAL

Accountants

Johnson, Harband, Foster & Darling, CPAs 310-454-6545
Pacific Palisades - Full Service Tax and Accounting Firm. jhfd@jhfd.com

Attorneys

BRICKELL & MEZA 310-858-3555
Serious injury lawyers/all claims & cases Free Consult
20 YEARS in Malibu & Beverly Hills

Doctor of Chiropractic

BRUCE A. PARKER D.C.
Practicing in Malibu since 1984
Treatment for stress - Sports Injuries.
In Malibu Health Club
310-456-7721 • Fax 310-456-5191
22917 Pacific Coast Highway, Suite 220
Malibu, CA 90265
310-456-7721

Dentists

Laura Fathi, D.D.S. 805-496-6177
375 Rolling Oaks Drive Suite 120, Thousand Oaks, CA 91361

David C. Niebergall, D.D.S. 310-457-9292
29350 Pacific Coast Highway, Suite 3

V. Mishra & N. Kripalani, D.D.S. 310-456-6497
23706 Malibu Road

Allan V. Pfeiffer, D.D.S. 310-456-2051
23440 Civic Center Way, Suite 201

Financial Services

Malibu Capital Management Inc./Securities America/
Security America Advisors. Full Service Asset Management.
Wayne Ribnick and Wally Glass 310-457-5113

Optometrists

Gregory O'Connor, O.D. 310-456-7464
3840 Cross Creek Road

Orthodontists

Richard L. Jacobson, D.M.D., M.S. 310-454-0317
Invisible/Conventional/TMD
881 Alma Real Dr., #200, Pacific Palisades, CA

Oral Surgeon

Stephen J. Nahigian, DDS 310-456-2051
23440 Civic Center Wy. #201

Physical Therapists

Gregory S. Beaton, PT, OCS 310-456-9332
Malibu Rehabilitation Center—Orthopedic/Sport Therapy & Gym

Physicians

Mary Lee Amerian, M.D. 310-456-7561
23410 Civic Center Way, Suite E-8 Dermatology

James H. Sternberg, M.D. 310-456-1765
23410 Civic Center Way, Suite E-8 Dermatology

Psychologists

Ann Forisha Thiel, Ph.D., M.F.C.C. 310-457-7606
Clinical Psych. & Marr., Fam., Child & Adolescent Therapy
28990 Pacific Coast Highway, Bldg. C, Suite 220

• MALIBU PROFESSIONAL and BUSINESS GUIDE •

Psychologists

Ann Forisha Thiel, Ph.D., M.F.C.C. 310-457-7606
Clinical Psych. & Marr., Fam., Child & Adolescent Therapy
28990 Pacific Coast Highway, Bldg. C, Suite 220

Veterinarians

Malibu Veterinary Clinic
Dr. Kay Fransen, D.V.M.
28990 Pacific Coast Hwy. (Pt. Dume)
310-457-6453



Veterinary House Call Service for Dogs & Cats 310-614-3530
Dr. Armaiti May, D.V.M. www.drarmaiti.com

BUSINESS

Air Conditioning & Heating

Malibu Refrigeration 310-457-9986
P.O. Box 4088 Malibu, CA 90265

Glass

Malibu Glass Company 310-456-1844
3547 Winter Canyon Road

Housecleaning

Malibu Maintenance—William D. 310-387-5408
Residential/Commercial

Roofing

Coastal Roofing Co. 310-455-2827
P.O. Box 2531 Malibu, CA 90265

MHS Lights Fight

(Continued from page 2) ball," she said, referring to promises made by an earlier board of education and then Superintendent Eugene Tucker in April of 1991 to reassure irate Santa Monica parents and teachers who opposed the formation of a high school in Malibu.

"Mr. Matthews [the MHS principal in 2000 when the football field was built] assured us there would be no night games at any time. If we seem adversarial, it's because of our past relations with the school," Hutchinson said.

"What's with the lights?" school neighbor Jay Griffith asked. He said that when the temporary lights first appeared, he was told, "They were just for homecoming. One night. Now [it's] six weeks, 203 nights. It's a slippery slope now turned into a landslide."

Malibu Park resident Marshall Thompson praised the sustainable aspects of the improvement plan, but called the field lighting "a glaring eco-contradiction."

"I don't believe you have the right to unilaterally bring enormous change to our local environment," Thompson told the board. "Don't you see what a contradiction this is?"

Not everyone was opposed to the lighting plan. "Friday night games have brought a lot of value," head football coach Ray Humphrey said. He credited the school's night games for the team's star player recently having been accepted to Princeton University.

Some parents suggested that the school stick with temporary lighting. John Ellis, who called himself a "football parent," stated he was "adamantly opposed to permanent lighting for anything but football." He

suggested that the district "add the word 'only' to football season. It would go a long way towards compromise."

Another resident agreed that the temporary lights weren't the problem. "I don't think very many people are concerned with Friday night football: it's 70-80-foot poles, 365 days a year."

Members of the football team described playing under the lights as an "incredible" experience.

"It's magical," Dustin Kramer said. "I can't talk about the legal aspect, but from a kid's perspective there is something different about it. Every high school student should have the opportunity."

However, legal issues were the central concern for many. Steve Uhring, speaking for the Malibu Township Council, summed up the field lighting opposition's position by reading aloud from the Vision Statement of the City of Malibu's General Plan:

"Malibu is a unique land and marine environment and residential community, whose citizens have historically evidenced a commitment to sacrifice urban and suburban conveniences in order to protect that environment and lifestyle, and to preserve unaltered natural resources and rural characteristics. The people of Malibu are a responsible custodian of the area's natural resources for present and future generations."

Uhring asked the board to "use the Vision Statement as a guideline as how you will interact with the neighbors who surround the school."

Board member Kelly Pye called Uhring's excerpt from the General Plan "instructive," and said that the board would continue to "grapple with issues and keep an

open mind." "We have broken our word in the past," Pye said. "The residents were reasonable [about temporary lighting]. We can come to a reasonable conclusion."

"I want to be respectful to all sides," board member Oscar de la Torre said. He added that this was the first time he had heard 203 days of use. "I'd like a little clarification," he said.

Jan Maez, assistant superintendent and chief financial officer, replied that "203 was a number discussed and announced in an effort to be really open and transparent." She added that there were "no real plans." However, the project consultants' PowerPoint presentation appeared to contradict this assertion with text that recognized "increased intensity of use (noise, traffic)" among environmental and community issues, but also listed an "increase from nine nights to 200 nights a year," with the recommendation to "study and fine tune hours of use, types, permitting."

"There needs to be time to discuss how to proceed," board vice president Barry Snell said. "I apologize. When I heard we had lights without permits, I was unhappy. I understand this is a rural area, we need to be sensitive to neighbors who let us have [temporary] lights without a ruckus."

Board president Ralph Mechur added that temporary lighting was "clearly not BB in any way, and moved to change the source of funding. 'The application will come back. It's on record, in the minutes.'"

Lights weren't the only BB issue. One speaker was in favor of lights, but concerned with plans to install a 250-space parking lot on the ridge above the football stadium. "I would assume the board

[will] take into account that it is rural," she said, seeking reassurance the lot would not affect the equestrian center.

"We're constrained by coastal sage brush," project consultant Tom Tomeoni said, but he did not address the issues of trail easements, which some equestrians are concerned will be blocked, or drainage from the proposed lot into an unnamed blue-line stream located east of the site identified as a potential Environmentally Sensitive Habitat Area.

James Edwards, a Malibu resident who is the principal of Oxnard High School questioned plans to install synthetic turf at the stadium. He outlined the costs of synthetic turf, including \$30,000 a year for chemical disinfectant and \$20,000 to maintain field condition. He told the board that, in his experience, there is no savings in water for the synthetic turf because sprinklers must be used to maintain the field "at a temperature suitable for play," and that, contrary to the consultant's assurances, a drainage system would be required.

"What is the rationale for synthetic turf?" Boardmember Ben Allen asked the consultant. Tomeoni replied that it offered more extensive use, but he acknowledged "there

are maintenance issues with synthetic turf."

"Why are we even talking about lights?" local Cindy Vandor demanded to know. "Coastal will never let you do it. The number one need is public safety," she said, adding that planned traffic and safety improvements, which had been praised earlier in the meeting as an example of the community and the consultants working together to find practical solutions, "are not a comprehensive plan until we include Juan Cabrillo."

Vandor also cautioned the board that septic system improvements required by the school have the potential to be a major expense. "Septic will cost you a fortune," she said, calling the lighting and synthetic turf plans "silly frills" in "the current bad economic climate."

The BB critic warned that those so-called frills could lead to lawsuits. "Your staff has kept you in the dark," Vandor said.

"We need to involve Cabrillo," board member Maria Leon Vazquez agreed. "We need a comprehensive view involving all schools [in the area]."

"Safety first," Pye added. "Cabrillo has to be in the mix. We are moving in the right direction. There's more work

to be done. I share your concerns with septic. I know it's a big concern in Malibu. Getting all these [issues] on the table is the first step to solving them."

The board agreed to meet with consultants and the public before its next Malibu session and walk the MHS campus to see the areas of concern firsthand. Additional outreach meetings were also proposed.

"I'm tired of meetings," one resident told the Malibu Surfside News after the five-hour session. "I've been to every one and they still aren't listening. They don't seem to understand that the lights are illegal. That they're breaking the law."

"In my mind, it's not a debate over lighting at the school," said another audience member, "but whether Coastal and the city will change course and allow night lighting in other public areas. It sets a precedent."

The next SMMUSD meeting is scheduled for Feb. 19, at Santa Monica City Hall. The next meeting in Malibu will be March 5. Information on the MHS Measure BB improvement plan is available online at: www.smmusd.org or malibuhigh.smmusd.org/BB/bbindex.html

BY SUZANNE GULDIMANN

Council Extends View Protection Task Force for Three More Months

The Malibu City Council, on a 4-1 vote this week with Mayor Andy Stern dissenting, tentatively approved extending the life of the View Protection Task Force Committee for another three months and the contract of the consultant to facilitate the group's efforts.

The panel is charged with developing a draft view protection ordinance. The task force was an outgrowth of an advisory ballot vote that received two-thirds approval.

Task force member Leon Cooper, who has consistently urged the council to approve a law similar to the one enacted in Palos Verdes, charged that the group and the council don't want to see any changes.

Sam Hall Kaplan, urged the council to allow the panel to continue its work and the consultant's assistance.

However, Marshall Thompson said, "This is beating it to pieces. The six months was plenty. It is time to...bring this whole process to an end."

Councilmember Sharon Barovsky agreed that the Palos Verdes ordinance seems to be working and suggested the task force look again at it.

Councilmember Pamela Conley Ulich said there should be a privacy element to the law. She added there is an affordability issue for those living on a fixed income who might be unable to comply with tree removal orders.

said, "I'm reluctant to extend the task force, but folks who have been on it have put up with a lot."

Councilmember Jefferson Wagner said he thought from the very beginning that six months was not enough time.

The mayor, explaining his dissenting view, said he was disappointed with the task force and thought they had gone way beyond their scope. He said he hoped the task force members had listened to the other council members' specific recommendations.

The 13-member task force has established an ad hoc committee to review and present its findings to the task force for approval.

BY BILL KOENEKER

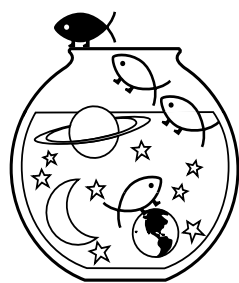
Are you a trendy fashionista?
Know the hot looks in hair and makeup?
Do you have a flair for color and style in home decor?

The Malibu Surfside News is looking for sales representatives to work on commission for three special newspaper sections:
 "Fashion and Style"
 "Health and Beauty"
 "Home and Garden"

Call 310-457-2112 or 310-457-6397 for more information

The Aquarium AGE

The Week of February 12-18, 2009



Concentration is the name of the planetary game this week. By Saturday, Valentine's Day, five planets—Mercury, Mars, Jupiter, the Sun, and Neptune—are lined up in the sign of Aquarius, suggesting a celestial strength that's sure to manifest as the deliberate desire to focus on a particular plan or project. Be prepared to chew on your favorite subject like a dog chews on a bone. Also expect many of those compulsive efforts to yield positive results. Most importantly, the majority of those purposeful missions are likely to be funded by altruism aimed at community service, which means good works can be derived from good intentions. While every day is a good day to make a difference in the world, right now is an especially good time to be an agent of change. The star of the week, and the source of probable positive results is a Mars/Jupiter conjunction. Jupiter symbolizes the urge for expansive, harmonious aspirations. Mars represents physical power, and when they share the same space (they are conjunct until the end of the month) they enhance our power to concentrate on specific ambitions. And since concentration is already

the signature of the week, this conjunction amplifies the already existing potential to direct time as well as energy toward specific goals. Be ambitious, be bold, think big, and be determined to overcome obstacles. The only obvious obstruction to this week's focused mindset is a Sun/Neptune conjunction, also in Aquarius. The combination of the Sun and Neptune inclines toward the mystical, and as part of that spiritual bent, tends to dial up increased sensitivity. Be prepared for you or those around you to be more than a little susceptible to suggestion. If you're feeling good about your prospects, protect that attitude by turning off your TV or radio. You don't need fear-mongers bringing you down or corrupting your sensibilities. Last week's column ended with the suggestion that readers allow love to steer the stars, a bit of advice that provoked someone to write in and ask how that was possible: Are we guiding the stars or are the stars guiding us? I love this question, because it goes to the heart of our relationship with the sky. Most of us tend to think that the planets make things happen, and certainly the language used to describe planetary activity is causal. But to define astrology as only causal is to deny our role as co-creators of reality. What if the universe does rearrange itself to accommodate our picture of reality? Or as it says in the Emerald Tablet: "That which is above is from that which is below, and that which is below is from that which is above, working the miracles of one." If we are co-creators (and I'm puttin'

my money on the idea that we are), then astrology would represent a symbiosis between heaven and earth—a mysterious relationship, to be sure, but also a powerful one, that would never allow us to give our power away to the stars.

If you know your ascendant and/or your moon sign, read that too.

Aries (March 21-April 19): While you may not think you could possibly be more social, you're about to add pages to your dance card. So rather than resist, embrace this opportunity for a wide range of interactions.

Taurus (April 20-May 20): It is all work, all the time, and actually that's just fine, because included in your increased responsibilities are lots of opportunities to stretch your existing role and expand your horizons.

Gemini (May 21-June 21): It's a trust exercise you can't avoid. So take a deep breath, and settle into an attitude that will allow you to accept what you can't control, as it simultaneously allows you to know when it's time to act.

Cancer (June 22-July 22): The focus is on financial improvement so don't let yourself be swayed by the prevailing negative media message. Be clear about your priorities, and then let those goals motivate your choices.

Leo (July 23-August 22): You're in a relationship intensive that includes interactions with all your relations, as well as your partnership with yourself. Treat others as you would be treated and you'll transform an old pattern of feeling invisible.

Virgo (August 23-September 22): Take some time to figure out how you can create a fresh perspective on your work situation. I'm not promising a miracle; I am suggesting there may be previously overlooked opportunities.

Libra (September 23-October 22): You're still in a highly sensitive emotional state, susceptible to all sorts of romantic inclinations. Be charming, but also be direct, and you won't mistake an innuendo for an invitation.

Scorpio (October 23-November 21): Powerful forces are stirring your psychic pond and your nervous system is absorbing the stress. Do whatever it is you do to spend excess energy in healthy ways, and you'll feel relief almost instantly.

Sagittarius (November 22-December 21): You won't run out of things to say and you might even be surprised to find yourself expanding into a new range of topics for lively discussion. The only thing to be concerned about is laryngitis.

Capricorn (December 22-January 19): Several opportunities to improve your finances may present themselves, but before you get involved in a get rich quick scheme, use your common sense. Remember if it sounds too good to be true, it usually is.

Aquarius (January 20-February 18): It's a joy to see you bustin' out all over—and having so much fun being you. Embrace this process, even if that means simply taking delight in the smallest of personal pleasures.

Pisces (February 19-March 20): Your imagination is so fertile your head is starting to resemble a Chia Doll, with ideas sprouting in every directions. Pay attention: Many of those inspirations are worthy of your efforts.

BY RALFEE FINN

Copyright © 2008

Diana Shui-Iu Wong

(Continued from page 6)

Of her abstract modular paintings, she says the style is a combination of her heritage in China and her training in Italy.

"It takes years of experience, all of my classical training in Italy," she says. "I know the color value, which color gives which light, so that's why I can play with it."

Her inspiration for working is the "I Ching"—or "Book of Changes." "Everything is changing from one second to another, so that's why my paintings can be changed. If you move them around, the whole painting changes," she says.

Having exhibited in museums and galleries all over the world including China, Italy, and the United States—with several shows in Los Angeles—as well as having works in many private collections, Wong keeps busy dividing her time between her gallery in Santa Monica and her home in Malibu, which she characterizes as an "inspirational place—it's where I go to get my inspiration and relax."

She travels to China once or twice a year to see family and for exhibitions of her work. "I am an artist of two

worlds. I have the heritage of the Eastern culture and I was educated in the West, in Italy. So naturally I can't separate myself from one place to another. So for this reason I go back, because they see me as the east and west fusion," she explains.

BY ROBBY MAZZA

The PUZZLE

Silly Talk

Edited by Linda and Charles Preston

ACROSS

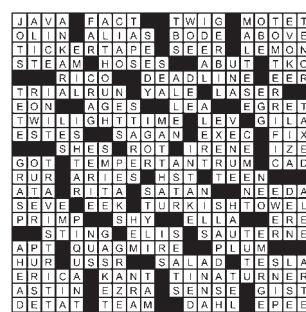
- 1 Sewing tools
- 5 Back or brat
- 9 Political party
- 14 Unusual
- 19 Of the people
- 20 With 1 Down, "California Suite" star
- 21 Bring to mind
- 22 Cornered
- 23 Unreal
- 25 Speaker of comment
- 27 Pianist Watts
- 28 Cat calls?
- 30 Lend a hand
- 31 Dawn Chong
- 32 Jason's vessel
- 34 Game ending?
- 38 Agent Smart
- 41 Start of a comment by 25 Across
- 46 Part of EMT
- 47 Vigor's partner
- 48 Roman or italic
- 49 General Powell
- 51 Indigence
- 54 "___ Restaurant"
- 57 "Ms." co-founder
- 59 Elizabethan dramatist
- 61 South African province
- 62 All-star game side
- 63 Hazardous gas
- 65 Refrain syllable
- 66 Classroom sound
- 69 Native: suffix
- 70 Role for 25 Across
- 71 Mineral seam
- 72 Comment, pt. 2
- 75 Comment, pt. 3
- 78 Mediterranean port
- 79 Charleston or Carmichael
- 80 Gotcha!
- 81 Marsh duck
- 82 Identity
- 83 Singer O'Day
- 85 Hawaii's state bird
- 87 Hold up
- 91 Driver or Riperton
- 93 Distinguished
- 95 Singer Peter
- 96 "The Subject Was Roses" star
- 97 Philosophy
- 98 Caspian's neighbor
- 100 Hog heaven?
- 101 Melodious McEntire
- 103 Comment, pt. 4
- 107 Cheeseboard choice
- 110 Besides
- 111 Roads scholar?
- 112 Loser to DDE

1	2	3	4	5	6	7	8	9	10	11	12	13	14	15	16	17	18		
19				20				21					22						
23				24				25					26						
27						28		29			30					31			
			32		33			34	35	36	37		38		39	40			
41	42	43					44	45				46							
47					48			49			50			51		52	53		
54			55	56			57	58			(Continued on page 16)	59					60		
61							62				63	64				65			
			66		67	68		69				70				71			
	72	73					74				75	76			77				
78					79						80			81					
82				83				84			85		86		87		88	89	90
91				92				93	94					95					
			96					97					98	99				100	
						101		102			103				105	106			
107	108	109									110								
112						113		114							118		119	120	121
122				123	124					125	126	127			128				
130								131						132				133	
134								135						136					137

©2009 Tribune Media Services, Inc. All rights reserved

2/12/09

- 113 Priv. pension
- 115 Tennis legend
- 118 Available
- 122 End of comment
- 128 December birthstone
- 130 "___ Breath You Take"
- 131 Midwestern airport
- 132 Screenwriter James
- 133 Check
- 134 Hardly Einsteinian
- 135 Synthetic fabric
- 136 Funny Foxx
- 137 Mlle, farther south
- 9 Runner's piston
- 10 Salute for Caesar
- 11 Start to cry?
- 12 Southern veggie
- 13 Diet and exercise, e.g.
- 14 NY gambling option
- 15 Montevideo's loc.
- 16 ___ Haute, Ind.
- 17 Kidney-related
- 18 Collector's car, today
- 24 Pere's chere?
- 26 Gouda alternative
- 29 ___ Vicente, Brazil
- 33 Obtains
- 35 Kind of plastic
- 36 Shortly
- 37 Gentleman of leisure?
- 39 Flash tube gas
- 40 Small songbird
- 41 Lendl or Turgenev
- 42 Home-improvement pro Bob
- 43 Send out
- 44 Basilica area
- 45 Sell in a store
- 50 Reputation
- 52 Senator Kefauver
- 53 Andrea ___
- 55 Director Frank
- 56 Literary lioness
- 58 Punta del ___
- 59 Foster, of "Nell"
- 60 A Bobbsey twin
- 64 Stop!
- 67 Pen pals?
- 68 Bangkok native
- 71 Jeeves or Passepartout
- 72 "Oliver Twist" villain
- 73 It's up in the air
- 74 Among: prefix
- 75 Amusement park cry
- 76 Role for Mia
- 77 Act like an ibis
- 78 Jewel
- 80 Vexes
- 83 Felt ill
- 84 It multiplies by dividing
- 86 Raison d' ___
- 88 Minus
- 89 Jocular Johnson
- 90 Lee Dorsey hit
- 92 Biblical ointment
- 94 Baal, e.g.
- 95 Singer Laine
- 97 Persevere
- 99 Stuck fast
- 102 It's sometimes jumped
- 104 One ___ customer
- 105 "___ Ben Adhem"
- 106 Contributors
- 107 Raved like a raven
- 108 Throw forcefully
- 109 German steel center
- 114 Pale
- 116 Night light?
- 117 Colossal
- 119 Row
- 120 Didion's "Play It ___ Lays"
- 121 Fastballer Alejandro
- 123 Hosp. areas
- 124 Carrie or Louis
- 125 Adjectival suffix
- 126 ___-Magnon
- 127 Barbie's boyfriend
- 129 Theorem initials



Fathers and Daughters Trip the Light Fantastic



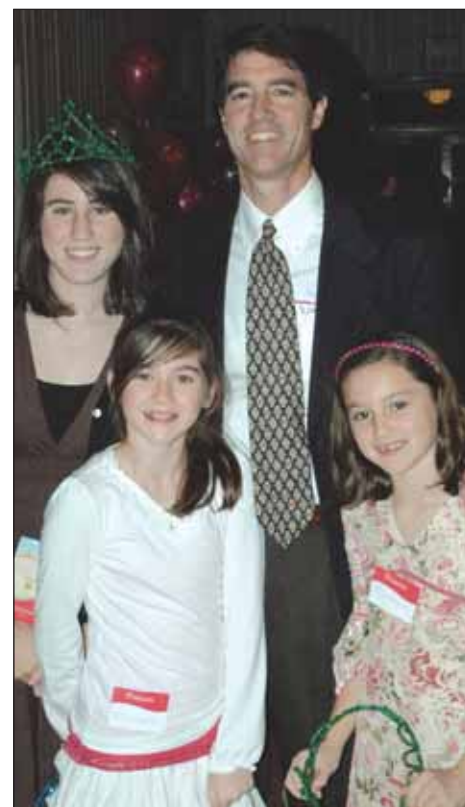
CELEBRATION—Al Pepito and his daughter Amber hit the floor.



DECKED OUT—Damon Bivens and his daughters Emma and Bella enjoy the evening.



LADY IN RED—Brian and Goldie Massey are all smiles at the Malibu Presbyterian Church's 2009 Father Daughter Dance that was held last weekend.
MSN Photos/Frank Lamonea



FUN NIGHT—David Ryan with daughters Kelly, Elizabeth and Kathleen.

LETTERS to the EDITOR

(Letters are continued from page 14)

atoms behave in strange ways when observed or measured. They change they spin direction, but in a balance. When one is observed, it changes its direction of spin. However, in a strange and beautiful way, the counterpart atom in that same group, will also change its direction to balance the first one. Now, this is what's amazing. The distance between the two counterpart atoms is not relevant. One can be on the other side of the galaxy, and it will change its spin to balance the other one, instantaneously.

This fundamental paradox, entanglement, is so beautiful and touching, because it means that everything, everything in the whole universe, is connected to each other. Think about it. We are all connected in the most fundamental and immediate way, regardless of the distance and space between us.

With the fact, proven fact, that our universe in its most fundamental construction is entangled and connected, how can we exist and prosper in any form of isolation? How can we prosper in the long term, when we defy our connections and act selfishly, advocating only for ourselves, without regards for our entangled world? We cannot. We must open our shells and allow ourselves to recognize and sense the entanglement which we share at our basic, fundamental level, as well as at our highest levels.

Only then, in my opinion, will we be able to sustain a

balance and maintain equilibrium with each other, our economy and our environment. The time of selfish apathy is over. Welcome to entanglement.

REMEMBRANCE

Editor:

How 'bout "them" ants: Remembering Mr. Whitmore

Over the years, Denise and I had the pleasure of chatting with Mr. Whitmore now and then in Malibu. He was such a charming and humorous man, and, occasionally, he and I would joke with one another on various topics.

One time, I shared with him the true story that the very first movie I ever saw as a young kid in the 1950s—with my father and growing up in the West Adams area in L.A.—was his scary film, "Them!" (Jokingly, I told him that, after seeing his real scary film, I required extensive therapy before I had the courage to ask my parents for an "Ant Farm"—to which Mr. Whit-

more responded with a so-called "courtesy chuckle").

Perhaps, the funniest chat we had was when I had a joke all set up in advance: I asked him that, given our health-conscious

society, if there's ever a sequel to "Them!" will the giant ants attack a city leaving mounds of artificial sweetener in the desert instead of sugar?

(Letters are continued on page 18)

CHOLADA BEACH
 Thai Beach Cuisine
 Garden Restaurant
 Owner-Chef: Nikorn
 Finest Authentic Thai Food
—OPEN—
 Monday-Friday: 11:30 a.m.-9:30 p.m.
 Saturday & Sunday: 12:00 p.m.-10:00 p.m.
 Call Ahead for Great Take Out Thai Family Dinners
(310) 317-0025
 18763 Pacific Coast Highway
 at Topanga Beach

Show Your Valentine You Can't Wait to Celebrate!
 Take her to
BEAURIVAGE
 Mediterranean Restaurant
 On the Beach
 In Malibu
 Established 1982

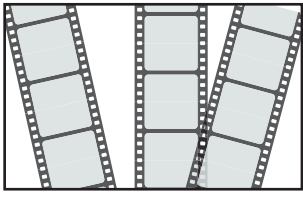
Valentine's Day, Saturday, February 14

~ ~ ~	~ ~ ~
BRUNCH 12 Noon-3 p.m.	DINNER
3 course prix fixe includes dessert & glass of Champagne \$50.00	3 course prix fixe includes dessert \$85.00
~ ~ ~	~ ~ ~

There will be entree selections of fish, meat & vegetarian dishes
 Open 4 p.m.-11 p.m. Bar open 'till 1 a.m.
Call 310-456-5733 for Reservations and Information
 26025 Pacific Coast Highway, Malibu, CA 90265
 2 1/4 miles north of Pepperdine University
www.beaurivagerestaurant.com

Malibu AWARDS Watch

MSN Goes to the Movies: Everyone Has an Opinion on the Oscars



IT'S ALL TRUE – Oscars' tricky Best Documentary Feature is arguably the only category in which a win culminates not just at the podium with thanks to God and agent, but can reverberate globally, bringing attention to an important argument or injustice, perhaps changing how we view the world or, in one nominated film's case, the city adjacent to

moves of LA City Councilmember **Jan Perry** and may even define her political career.

Consider the formidable, culturally entrenched titles against which "The Garden" competes. "Man on Wire," which recalls the majesty of the Twin Towers as it profiles **Philippe Petit's** illegal high-wire stunt performed between them in 1974, has been accumulating acclaim, a slew of awards and \$3 million at the box office since it took Sundance by storm a year ago. Acclaim and box office (nearly \$1 million) has also greet-

independent film's most well-liked cinematographers that enjoyed its own honors, raves and a timely theatrical Beverly Hills release at Christmas.

In order to vote in the category (a process "Garden" director **Scott Hamilton Kennedy** has called, not surprisingly, "complicated but fair") Academy members must see all five nominated features in a movie theatre (at a film festival, during its theatrical release or at special Academy screenings) and apply for a special ballot. This means voters are taking their deliberation very seriously, but also that they will likely see "The Garden" under the relatively cloistered circumstances of an Academy screening, that is, without the benefit of a general audience or film festival context. Whether or not that levels the playing field or puts "The Garden" at some kind of a disadvantage is impossible to know. But since most Academy members are Angelinos, don't count out this rousing portrait of old-school activism: all news is, as they say, local news.

★ ★ ★ ★ ★

FREAKY FREAK-OUTS—If **Christian Bale** had been nominated for "The Dark Knight," chances are the audio recordings of his freak-out on the set of "Terminator: Salvation" that surfaced last week would have cost him the trophy. Precedent: the Academy spurned **Russell Crowe** and "Cinderella Man" after he attacked a New York hotel employee in 2005. But the sow's ear of Bale's bad behavior, for which he strategically apologized with a reportedly unscheduled call to KROQ's Kevin & Bean morning show last week, has borne out the silk purse of online comedy. For a huge laugh, search YouTube for "Michael Cera Flips Out" and you will be treated to a heck of a rant from the thinly-

mustached, swollen-egoed, spindly-legged Canadian star of "Juno" and "Superbad" on the set of his new movie "Youth in Revolt." "Speak English!" he shouts at cinematographer **Chuy Chavez** and director **Miguel Arteta**, who try in vain to calm him.

The timing of the video is genius, hitting the moving bulls-eye of pop-culture zeitgeist while giving away very little about the movie itself. We learned in an email from Arteta that the commotion was "spontaneous" and also that "Michael Cera is a true pain in the ass and he and I are done professionally." But consider this: "Youth in Revolt" is the first movie in six years from Arteta ("Star Maps," "Chuck & Buck," "The Good Girl"), one of the gentlest, smartest, most empathetic independent filmmakers of his generation. Cera, too, is the incarnation of sweet, funny, self-effacing, the kind of gifted young actor who could probably use a good scandal. So take the clip with a huge grain of salt and keep in mind that Cera and Arteta have lots of time to kiss, make up and make us laugh even harder when their movie opens later this year.

★ ★ ★ ★ ★

SATURDAY SNOOPING—The rain and rocks fell, the mud flowed, then the sky magnificently cleared and, sick of our own ruminations on all things Oscar, Awards Watch ventured out to learn what some of our neighbors thought of the acting races.

Tom Nolan at Rock Star Jewelers wants **Mickey**



TOM NOLAN

Rourke to win "because I like to see someone bounce back from a rough time." **Jae Rose** at the **John Var-**



JAE ROSE

vatos boutique agrees, but thinks **Sean Penn** will take the Best Actor prize, noting that "biographies always do pretty well." He also thinks **Meryl Streep** will win for "Doubt" but hopes Angelina Jolie will be recognized for "Changeling" because she "seemed in command and control in the role of an outspoken woman."

Popular sentiments in the Best Supporting Actor category point to a win for Heath Ledger, at least if you talk to **Kyle D. Krajewski** at the



KYLE D. KRAJEWSKI

RRL Ralph Lauren boutique ("the most insane performance on screen: gripping, creepy, just couldn't get enough of his character") or **Jordan Purwal** at the Malibu Cinema ("his presence attracted all audiences").

But we found our two most opinionated – and busy – subjects by hanging around the bar at the Malibu Pier Club and sipping an expertly prepared virgin Mojito. Bartender **Allan Pfeifer** and waiter **Kim Alexander** both hail Streep's "makeup-free"

performance but Alexander thinks **Kate Winslet** will take the statue for "The Reader," noting momentum from her win at the Golden Globes, the film's serious subject matter and the challenges of working so intimately opposite a younger, less experienced



JORDAN PURWAL

actor. The co-workers agree Penn will be named Best Actor, but disagree when calling the Best Supporting Actress race. Alexander, an actress



ALLAN PFEIFER and KIM ALEXANDER

herself, wants **Taraji P. Henson** to be recognized for her work opposite **Brad Pitt** in "The Curious Case of Benjamin Button," but thinks the statue will go to **Amy Adams** for "Doubt."

Pfeifer has a soft spot for **Marisa Tomei** in "The Wrestler," but his money is on **Penelope Cruz** for "Vicky Cristina Barcelona," astutely observing that director **Woody Allen** "has a long string of Academy supporting wins" (think Malibuite **Mira Sorvino**, **Sir Michael Caine**, **Dianne Wiest** x2). Awards Watch thanks everyone who participated!

BY JEREMY WALKER



STAND—Oscar-nominated actor **James Cromwell** and presidential candidate **Dennis Kucinich** protest against development of the community garden in South Central L.A. that is the subject of "The Garden," nominated for Best Documentary Feature. A.P.A.S.

which we live.

That film, "The Garden," is impossible for average moviegoers to see, because it has no distributor. Yet "The Garden" is about the very soul of contemporary Los Angeles, covering the highly publicized, racially charged struggle over the fate of the community garden at 41st and Alameda in South Central that brought together a guy running for mayor named **Antonio Villaraigosa**, a guy running for president named **Dennis Kucinich** and such celebrity activists as **Daryl Hannah** (so visible at our LNG protests), Malibu's own **Martin Sheen** and Oscar-nominated actor **James Cromwell**.

"The Garden" also scrutinizes the questionable

ed "Encounters at the End of the World," which was made in Antarctica by **Werner Herzog**, the beloved director whose "Grizzly Man" (aka Malibuite **Timothy Treadwell**) was showered with awards, but *not* with an Oscar nomination, in 2005. (Both "Man on Wire" and "Encounters" are available on DVD.) The people behind "Trouble the Water," a deeply personal look at the ravages of Hurricane Katrina, have held dozens of grass-roots screenings and limited engagements all over the country, including L.A., and has the winds of political change and critical acclaim at its sails, while "The Betrayal (Nerakhoon)" is the quarter-century-in-the-making pet project of one of

LETTERS to the EDITOR

(Letters are continued from page 17)

Without hesitation, he retorted, "There's no need to worry that these giant ants will ever return. We wiped them all out the first time around!" We'll truly miss Mr. Whitmore.

David and Denise Pepper

STAGE PRESENCE

Editor:

An article on Jan. 29 entitled "Malibu Stage Co. Takes a

New Direction" seems to infer that the so-called "new direction" the company was taking somehow required distancing itself from the accomplishments of the past.

That inference discredits 20 years of achievements that generated an enviable nationwide reputation for MSC—one that presented award-winning plays and classics, with professional well-known actors. Malibu's only professional theatre produced plays that were well-received in reviews by the L.A. Times and other regional newspapers. And three MSC original productions went from Malibu to New York off-Broadway, garnering enviable reviews in the New York Times and Wall Street Journal, among others.

I believe this new group owes the founders a debt of gratitude, enabling them to stand on the shoulders (and the stage) of Malibu Stage Company's longstanding and hard-won reputation for excellence.

It was those years of professional theatre achievement

with artists such as **George C. Scott**, **Ed Asner**, **Martin Sheen**, **Rod Steiger**, **Kathleen Quinlan**, **Harry Hamlin**, **Shelley Berman**, **Dick Van Dyke**, **Trish Van Devere**, **Genevieve Bujold**, **Stacy Keach**, **Lynn Redgrave** and **Charles Marowitz**, which defined the Malibu Stage Company.

Jacqueline Bridgeman

Behrle Graphics

Logos • Brochures • Layout & Design
Photography • Illustration • Drawing and Animation

Reasonable rates

Richard Behrle 310 280-8690
r_behrle@yahoo.com 818 718-1172

MALIBU *Beach, Canyon & Mountain*

R E A L E S T A T E

**MALIBU
REAL
ESTATE
INVEST
IN
LIFE**

RE Spotlight

Local Realtor Receives Environmental Award

The Malibu Association of Realtors has announced that its 2009 president, Bill Bowling, has recently received an environmental award.

The City of Calabasas Environmental Commission selected the Aerospace Cancer Museum of Education (ACME), as the winner of the Carl Gibbs Environmental Excellence Award as a symbol for the Commitment to the environment that ACME founders Christina Walsh and Malibuite Bill Bowling have shown over the past year.

ACME opened on May 9, 2008 as a center where community members can

learn about the Santa Susana Field Laboratory, which was the site of one of the worst nuclear accidents in U.S. history, and the historic clean-up initiatives recently signed by Governor Arnold Schwarzenegger and sponsored by State Senator Sheila Kuehl and Assemblymember Julia Brownley.

Aron Miller from Pavley's office was on hand to present Bowling and Walsh with a Certificate of Recognition from the State Senate.

Visit ACME online at www.ACMELA.org or in person at 23350 Lake Manor Drive in Chatsworth.



BILL BOWLING, ARON MILLER, CHRISTINA WALSH

FEATURED HOMES

SUSAN
MONUS



DISTINCTIVE
MALIBU HOMES AND
ESTATES



PROPERTIES PRICED TO SELL

REDUCED!

\$3,650,000



www.tropicalparadiseinmalibu.com

OPEN SUNDAY 1-4

\$2,395,000



Point Dume Ranch

29343 Bluewater Rd



Prestigious Properties for Distinguished and Discerning Clientele

Featured Homes	Call for Additional Properties
MASTERWORK OF ARCHITECTURE/DESIGN	\$ 7,900,000
NEW! POINT DUME COMPOUND	\$ 4,995,000
MALIBU PARK ESTATE W/OCEAN VIEWS	\$ 4,450,000
NEW! ULTRA-HIP LA COSTA TOWNHOMES	\$ 3,995,000
NEW! MALIBU COUNTRY ESTATES	\$ 2,795,000
NEW! PARADISE COVE	\$ 2,795,000
CORPORATE OWNED FORECLOSURE	\$ 1,899,000
OUTSTANDING OCEAN VIEWS	\$ 1,895,000
PANORAMIC VIEWS	\$ 1,695,000

Featured Homes	Call for Additional Properties
PT. DUME TOWNHOME W/ BEACH KEY	\$ 1,400,000
THE POINTE	\$ 1,299,000
NEW! OCEAN VIEW VILLA RETREAT	\$ 1,299,000
Estate Land	Build Your Dream Home in Malibu
MALIBU PARK-PERMITS	\$ 2,050,000
NEW! OCEAN VIEW LAND W/PLANS	\$ 1,199,000

Homes for Lease	Live the Malibu Life
MALIBU COLONY BEACH	\$ 75,000 per month
MALIBU ROAD	\$ 30,000 per month
NEW! LA COSTA TOWNHOMES	\$ 10-12,500 per month
MALIBU COUNTRY ESTATES	\$ 8,000 per month
PANORAMIC VIEWS	\$ 6,500 per month
NEW! OCEAN VIEW VILLA RETREAT	\$ 5,500 per month
PT. DUME TOWNHOME W/ BEACH KEY	\$ 3,950 per month
REDUCED! POINT DUME CLUB	\$ 3,750 per month

See More. Learn More. Visit www.SusanMonus.com • 310.589.2477 • susan@susanmonus.com

©2008 Coldwell Banker Real Estate LLC. Coldwell Banker®, Previews®, and Coldwell Banker Previews International® are registered trademarks licensed to Coldwell Banker Real Estate LLC. An Equal Opportunity Company. Equal Housing Opportunity. Owned And Operated By NRT LLC. Broker does not guarantee the accuracy of square footage, lot size or other information concerning the condition or features of property provided by seller or obtained from public records or other sources, and the buyer is advised to independently verify the accuracy of that information through personal inspection and with appropriate professionals.

MALIBU *Beach, Canyon & Mountain*

R E A L E S T A T E



Isabel Miller
310-456-RENT
RENTALS

\$2350/mo. CORRAL CANYON. 2 bdrm 1.5 ba—just seven minutes up Corral Cyn. Fantastic views, Unf. 1 yr. lease. Avail. immed.

\$2700/mo. MALIBU ROAD. Apt. 1+1 upper unit w/sensational ocean views, large deck, 1 car garage, wood floors, new paint. 1 yr. unf. No pets.

\$3000/mo. BIG ROCK BEACHFRONT Apt., close in 1+1. All new paint, wood floors, countertops & fixtures. Large oceanfront deck & steps to sand. Avail. now! 1 yr. lease, Unf.

\$5000/mo. LA CHUSA HIGHLANDS. Astounding 180 degree ocean views from most rooms. 1 level spacious 3 bdrm. + family room 2.5 bath home! Custom cabinetry, ocean view lanai, private patios w/ spa. (Just 1/2 mile off PCH) 1 yr. lease, Unf.

\$7500/mo. ESCONDIDO BEACHFRONT. Cottage. "Maui in Malibu" 1950s beach house updated & furnished in "Hawaiiana." Cozy 2 + 2 w/oc. on wide sandy beach. Kick back on spacious decks or cuddle in front of the brick fireplace. Avail. for short or long term. Pet OK.

\$7900/mo. BEACH CLUB WAY. Tri-level 3 + 3 fully furn townhouse exclusive, gated Malibu Bay Club. All levels have amazing whitewater views & balconies. Avail. short term.

\$10,000/mo. ENCINAL BLUFFS. Bluff top home w/steps to stunning sandy beach cove! 2 + 2 + bonus rm. gated 1.6 ac., lush landscaping, expansive green lawns & pvt. stairs to pristine beach. Perfect get-a-way incl. fabulous outdoor entertaining patio. Avail. short term only. 1 mo. min.

\$20,000/mo. CARBON BEACH. Truly the classic California Beach house! Relax on Malibu's premier Carbon Beach. 1 story, 3 + 3 home on 50' of wide sandy beach. Huge deck, master on water, immaculate & fully furnished. Available for short or long term lease until June '09. No pets please.

\$30,000/mo. ESCONDIDO BEACH. The Ultimate Luxurious vacation cabin on the sand! 65' of Malibu's best sandy beach. Warm, inviting 2 + 2 1/2 w/detached ofc./studio. Master on water. Walk to Paradise Cove for breakfast & Geoffreys for dinner! Also avail. weekly @ \$10,000/wk. Pets OK.

\$37,500/mo. "LITTLE BROAD BEACH ROAD." Magnificent 4 bdrm. + 4 bath oceanfront residence. Beautifully appointed home reminiscent of a 5-Star hotel w/Luxury master suite, private attached quest suite, grand terrace adjacent to sandy beach, all perfect for that celebrity clientele. Avail. short or long term or Summer @ \$75,000/mo.

310-456-RENT 

RE Spotlight

The Wight House



28933 Wight Road

A wonderful four-bedroom, three-bath home located adjacent to Point Dume, this property has it all, privacy, ocean views, a great floor plan with hardwood floors and high ceilings, family room, spacious light and bright kitchen overlooking pool and garden, and three-car garage. A great pool area is surrounded by rolling lawns, flower gardens, a charming gazebo and lots of fruit trees. Approximately one flat acre of usable yard to enjoy year round. Located with convenient access to schools.

Offered at \$2,395,000. For more information, contact Christine Rodgers, Coldwell Banker, 310-317-9313.



BRIAN MERRICK
Associate Manager
(310) 317-8373: DIRECT
Malibu Colony Coldwell Banker
CURRENT LISTINGS

PT Dume 3 bd., 3 bath., ocean view home with beach key, 1.25 acres.....
.....IN. ESCROW. \$2,600,000

PT Dume 1 flat acre lot direct path to beach, Zumirez beach key, old reports ..
.....\$2,300,000

Ocean View 3 bd., 3 bath., home on three private acres.....\$1,750,000

PT Dume Club 2 bd 3bath., with ocean view and low space rent\$750,000

2Bd, 2Bth Condo at the beach with ocean views, pool, private beach
.....\$700,000

LEASES

Zuma Bluff Rental 4 bd., 2 bath., whitewater views, across from beach.....
.....\$7500/mo.

Malibu West Rental 3 bd., bath., beach club & tennis, whitewater views.....
.....\$6500/mo.

www.BrianMerrick.com 

For all your local news, visit
www.malibusurfsidenews.com
Malibu's only real online newspaper



DAVID CARTER
310.456.6271 (Direct) • 310.980.4434 (Cell)
www.MalibuMobileHomes.com


PARADISE COVE MANUFACTURED HOMES - Malibu

TERRIFIC REMODEL: Upscale 1+1 beach home. Walk to sandy Cove Beach. Saltlito tile flrs & counters. Fenced & private, quality slider to sizable deck. \$ 259,000

STEPS TO THE BEACH: Great little home for year-round living or vacation get-away. 1+1, nicely remodeled, singlewide. Fenced, decks. Fully furnished. \$ 298,126

SUNNY LOCATION: Nice creekside 2+1 beach getaway. Large prvt back patio, just 250 yds to the sand. & surf. Custom remodel, wood flrs & room to build. Incl furnishings. \$ 345,000

FANTASTIC CUSTOM HOME: 1 bd + 1 ba, just steps to the beach. Fully furnished. Hardwood floors, stone bathroom, everything perfect. \$ 375,000

QUIET LOCATION ON BEACH LEVEL: Charming 2+1 with 1,100 sf. Private and sunny, front porch, back deck, good parking. Great value. \$ 465,000

LOCATED CREEKSIDE: Newer 2 bdrm, 2 bath home, fully furnished. Front and back decks. Good parking. Ready to go! \$ 475,000

AFFORDABLE, NEWLY RENOVATED DOUBLEWIDE: 2 bd + 2 ba and bonus room. Upper level location. Light & bright, large fenced yard. Ready to move into. \$ 520,000

EXTRA-LARGE: Private & fenced, landscaped yard with lawn. 2+2, high ceilings, covered patio and deck. Great value. \$ 545,000

CUSTOM BUILT BEACH HOUSE: 2 bedrooms, loft, 2 bathrooms, wood & tile throughout. Patios, fenced, private setting and spa tub. 2-car parking. \$ 549,000

WHITewater OCEAN VIEWS: 150 yards to the sand! Total custom 2+1 beach home. High ceilings, tile & wood floors, decks, grass yard. \$ 655,000

MODERN FRONT ROW HOME: Newer 3+2, trees, cyn & distant ocn vu. Hi-celings, drywall, wood & tile. Sep fam rm/den, fp, decks, spa, fenced yard. 3-car pkg, near bch trail. \$875,000

WHITewater VIEWS: Hrdwd flrs, stone fp, tile bthrms w/granite cntrs, ktchn w/center isl. Lg wrap-around deck, BBQ & refrig. Hillside bluff location. In Escrow \$1,245,000

ULTIMATE BLUFF LOCATION: Incredible ocean and whitewater views of Santa Monica Bay. Stunning 3bd+2ba home with 2,200 sq. ft. of luxury. \$2,700,000

POINT DUME CLUB MANUFACTURED HOMES - Malibu

BEST PRICE HOME: 2+2 in a sunny location near beach gate. 1,550 sq. ft., decks, backyard, patio. Ready to move into. Low space rent. \$ 450,000

PANORAMIC OCEAN & MOUNTAIN VIEWS: Very private 2+2 with bonus rm/ofc., 1,550 sf. Nice flr plan, wood flrs, secluded deck. Lovely garden & fruit trees. \$ 475,000

CLOSE TO BEACH EXIT: Outstanding ocean view 2+2. Nice open floor plan, wood flrs, big wrap-around deck with ocean, sunset & mountain views. \$ 495,000

AFFORDABLE OCEAN VIEW HOME: 3 bdrm + 2 bath + office and craft room. 1,750 sf, nice sunny decks and fenced yard. Low space rent. \$ 535,000

NEWLY BUILT CRAFTSMAN: Sunset & ocean views. 3+2, 1,760 sf of custom luxury. High ceilings, hardwood floors, custom tile, roof deck. \$ 895,000

OCEAN VIEW LUXURY: Newly built 3+3, custom 2,200 sq. ft home., Stone & travertine tile floors, gourmet ktchn. Large glass sliders to open decks. Fully landscaped. \$1,545,000

SEMINOLE SPRINGS MANUFACTURED HOMES - Agoura Hills

NEW CUSTOM BUILT HOME: Architecturally environmentally designed 2+1 1/2 & lofts. Mtn vus, sep art studio, koi pond, waterfall, fire pit, walkways & decks. Fenced yard. \$ 275,000

RESIDENT OWNED PARK: Affordable 2+1 on large lot w/mtn vus. Drywall, wd flrs, tile bath, open ktchn, 2-car pkg. Park incl s fishing lake, club hse, pool, spa, gym... \$ 169,000

Good Financing Available!

MALIBU • MARGARET

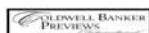


ENJOY PANORAMIC OCEAN AND CANYON VIEWS

This unique ocean view home has a versatile floor plan with three bedrooms, two or three offices, and two and a half baths. Located in a gated community close to the market, and beaches. Two car garage. Offered for lease at \$6,000 per month yearly.



Margaret Hauptman
310.317.8394
www.malibuconnection.com



**Malibu Is More Than a Lifestyle...
It's a Way of Life.**

THE MALIBU Marketplace

C L A S S I F I E D

ADVERTISING PROCEDURES

The rate for classified advertising is \$35 for 30 words or less. There is a charge of 50 cents for each additional word over 30. This ad copy plus payment may be mailed to MSN Classified Advertising, P.O. Box 903, Malibu CA 90265. Ads can be placed in person for the current week's issue until noon on Tuesday at our offices at 28990 Pacific Coast Highway, Suite C-116 (PCH and Porthead Road, just north of Kanan-Dume Road).

For your convenience, ads may also be telefaxed to MSN at 310-457-9908 until noon on Tuesday for the current week's issue. The rate for all faxed ads, as well as all classified ads billed to open display advertising accounts (display ads in newspaper during current month), is \$35 for 30 words or less and 50 cents for each word over 30.

The News reserves the right to decline to publish any advertisement, to address objections in wording and to delete copy to match payments submitted with an ad. Submission of advertising copy to The News is not a guarantee of publication or an agreement for continued publication. The News is not liable for failure to publish an advertisement or for more than one incorrect insertion of an ad. Liability is limited to the cost of the advertising space only, with maximum liability being the cost of the first incorrect ad or republication of the correction.

All offices of The News are open Monday, Tuesday, Thursday and Friday from 9 a.m. to 5 p.m. and Wednesday from 9 a.m.-1 p.m. There is an ad copy drop-off box at the main MSN entrance for after hours use. For additional information about advertising in "The Community Forum of Malibu," contact 310-457-2112, 310-457-4235 or 310-457-NEWS (6397).

ANIMALS FREE

For free: male and female Yorkie terrier pups. AKC registered. Email miller009@live.com.

ASTROLOGY

RALFEE FINN

specializes in *Transformational Astrology.* For information about readings, call

1-888-937-9264

Write to Ralfee Finn at Post Office Box 343 New York, NY 10025 You can visit her web site www.aquariumage.com or email her at ralfee@aquariumage.com

AUTO BROKER

Save time and money. Let me negotiate the purchase/lease of your next vehicle. Consign your existing vehicle for retail value! 30 years experience. Charles Stiegler, cs@autostiegler.com, 818-266-9060. 0219

SAVE A LIFE

Adopt a pet from your local shelter.

AUTO DETAIL AND BODY

Malibu Auto Detail and Restoration. Full service auto body and paint. Free pick-up and delivery. Mobile detailing in Malibu for 23 years. Gift certificates. Visa/MC. 310-456-3929. 0212

AUTOS FOR SALE

2002 Toyota Prius, 59K miles. White exterior, gray leather interior. Great condition, \$9000. 310-383-5626. 0219

www.malibusurfsideneews.com

BEAUTY SERVICES

Gorgeous hair in a few hours. I will come to you. I use protein bond. Fullness and length. I will make each piece by hand. Low lights and highlights. No more shag, just beautiful locks. Look years younger and get all the attention. 310-773-6316. Christiane. 0219

BOOKKEEPING

Bookkeeping—Longtime accounting experience. Services provided for personal, business needs. Certified QuickBooks Pro Advisor. Local references available. Please contact Kathleen at 818-292-1488. 0226

CAREGIVER

Caretaker available. Live-out. Cooking, errands, doctor's appt. Own transportation, Calif. Driver's lic. For more information, call Beth, 818-857-1345. 0226

CHILD CARE

Babysitting and excellent housekeeping. I enjoy cooking, keeping your laundry clean and ironed—whatever will help you. Available Monday through Friday and also weekends. CA driver's license, CPR certificate, references. Call Marta, 323-753-3271 or cell, 323-605-5130. 02212

DESIGN CONSULTANT

CAROL LARKIN



Home Design Consultant
Home Staging
310-457-1681

DOMESTIC

DO YOU NEED

- Babysitting?
- Caretaking?
- Cooking?
- Chauffeuring?
- Petsitting?
- Housesitting?

Call the Family
818-448-3759 or
818-857-1345

FIREWOOD

Seasoned firewood. Hardwood, softwood, mixed or stove wood. Firewood racks and stacking available. Call Steve at Lumberjack Firewood 7 days a week for prices and delivery schedule. 310-457-4274 or 310-463-2947. 0219

FOR SALE

Copier for sale. Cannon Imagerunner 105 in good condition. Please submit bids to: City of Malibu, 23815 Stuart Ranch Rd., Malibu, CA 90265. For more information, call 310-456-2489, ext. 224. 0212

New Bowflex tread climber as advertised on TV. Dual motion system with smooth flow of an elliptical trainer. Paid \$2700, will let go for \$1400. Moving out of the states, fast sale. Make offer. Totally assembled. Contact Michelle, 310-936-9553. 0219

GRAPHICS

Behrle Graphics

- Logos
- Brochures
- Layout & Design
- Photography
- Illustration
- Drawing and Animation

Reasonable rates
Richard Behrle
r_behrle@yahoo.com
310 280-8690
818 718-1172

HANDYMEN

Repairs, remodeling, additions and problem solutions for your home and property. Licensed, bonded, insured general contractor, license # 664942. I can perform tasks from small repairs to building from architectural plans. Local references. 818-314-7592, Tad. 0219

Licensed, insured, local. Experienced in all areas of building. Small repairs to medium-size projects. Large inventory of parts for "on the spot" repairs. Design/character conscious. Terence J. Oehlberg, Contractors 310-457-8491. Lic. # 518294, tjocmalibu@earthlink.net. 0219

COME PLACE HAS BEARD
THE CLASSIFIEDS



HAULING

Happy Hauling Malibu. Hauling single items to gigantic loads. Residential and commercial clean-up. Yards, closets, storage, houses and furniture moving. New 17-foot moving van! We love helping out with anything you need help with! 7 days, 310-228-8158. 02212

HEALTH AND FITNESS

Polarity therapy massage in your home—25 years exp. 1 hr.—Bruce, 310-924-6222. 0219

HOUSECLEANING

Offices, houses, apartments, condos. Professional house and commercial cleaning. 10 years experience. Own transportation, excellent references in Malibu. Please call Elia, 310-413-2356. 0219

Housecleaning by day. Own transportation, English speaking. Very reliable, hard working. Available Mon., Tues. and Fri. Please call Sally at 310-247-0342 or 310-720-8002. 0212

Professional service. We make your home or business star sparkling clean. Serving the community for over 13 years. The best in housekeeping for the best price. Good references. Call Bertha, home: 323-754-6873 or cell: 213-393-1419. 0326

OFFICE SPACE

Prime office suite in quiet Pt. Dume building. Over 800 sq. ft. with windows facing grassy landscaped area. 3 parking spaces. \$1600/mo., utilities included. No extra monthly charges. 310-457-4326, cell 310-429-9832. 0212

Office building for lease. Approximately 1800 sq. ft. Carbon Beach/PCH. Five private offices, conference room, kitchen, bathroom, reception, large bullpen and parking. \$9000/mo. plus NNN. 310-456-7031, ext. 175. 0219

★ ANIMAL STARS of the WEEK ★



Allie is an adorable, high energy, very cute six-year young shepherd mix. A beautiful golden color, she loves to chase after balls and runs with abandon. She's the perfect buddy dog, great for hiking and fun. She'd do best in a home with older children. Come adopt Allie and fall in love. Adoption #1227369.



Bunnies need love, too. The shelter is filled with soft, furry rabbits needing homes. It's hard to resist something as gentle and full of life as a rabbit. Rabbits make wonderful pets, are full of personality and are a joy to share your life with. They'll also make you laugh with their antics. Come into the shelter and fill up your life with a bunny!



Pug lovers, your lucky day is here! Come meet Todd, a really sweet boy who is engaging, happy and easy with other dogs. He is a lap-loving doll, a joy to snuggle with. Todd is a healthy seven-year-old and full of pug-personality! Todd needs you today, adopt him at #3926270.

Neither The News nor any of the animal volunteers can determine the appropriateness of a particular animal for a prospective adopter.

Agoura Animal Shelter • 29525 Agoura Road, Agoura Hills.
818-991-0071
<http://animalcare.lacounty.gov>

Find the Lucky Star in the ad you placed in the Malibu Marketplace and WIN Two Tickets to the Malibu Theatre!



THE MALIBU *Marketplace*

C L A S S I F I E D

PAINTING
A Pacific Painting. Residential, commercial. Interior and exterior. Dry wall, plaster, stucco, repair, pressure washing. Bonded and insured. Lic. #908913. 310-954-7170.
 0305

Quality interior and exterior house painting. No job too big or too small. Best quality materials. Local and national references. Clean, neat workmanship. No mess. Phone Steve at 310-456-6534.
 0212

JOYCE
CUSTOM PAINTING
 Commercial & Residential License
 Interior & Exterior
 Faux Finishes - Stain
 Oil Paints - Sealers
 Epoxy Coating - Lacquers
(310) 435-7551

PERSONAL ASSISTANT
Personal Assistance! Need help getting your tax receipts together? Type for you! Paralegal will draft/prepare correspondence, reports, resumes, bill paying, run errands, organizational help, scheduling/meeting vendors, small to large projects. Great rates! Call Jenny, 310-600-6404 or email jenny@malibuwavecrest.com. See Malibuwavecrest.com.
 0226

For all your local news visit
 www.malibusurfsidenews.com
Malibu's only real online newspaper

PLANTS
Looking for plant enthusiast to help save green nursery/home. Mother (business partner) stole life savings, left for dead. Exotic drought-tolerant plants. Landscaping of the future. Tax man coming soon. John, 760-213-5021, 760-643-9034.
 0305

REAL ESTATE
Industrial shops, "New" 600'-2400', for sale or lease. City of Oxnard (20-30 PCH minutes from Malibu), 10 x 12-roll door, office, bathroom, 15' ceilings. No automotive, vehicle storage OK. 805-486-8796., www.arcturusproperty.com.
 02410

RENTALS
Pt. Dume Club, 2 bd., 2 ba., new carpet and paint. Big back yard. Dog considered. Pool, spa, sauna, tennis court. \$2200/mo. plus utilities. Will negotiate for long lease. 310-457-9348.
 0219

Malibu guesthouse—furnished 2 bd., 1 ba., kitchen, laundry, utilities included. Steps from Broad Beach, isolated and private, pets OK. \$2700/mo. Call 310-985-5896.
 0219

Studio-size guest house. Zuma hillside. Newly remodeled. One person, no pets. Full bath, kitchen, washer/dryer, parking, utilities included. \$1250/mo. First and last months and security deposit. 310-457-7865.
 0219

Welcome "Pep Law." Ready for immediate occupancy. MCV unit. Can accommodate 3. Completely remodeled. Quarter-mile from campus. Underground parking. Security gated. Pool, tennis, sauna. www.maiburentals.com, 310-403-3737.
 0226

The best ocean view in Malibu. Completely remodeled 2-story condo. 2 bd., 2 ba., small office. All new kitchen, bathrooms, carpets, drapes. Tennis, pool, sauna, gated. \$2600/mo. 310-403-3737.
 0226

RENTALS
Breathtaking ocean view, 2-story home. 3 bd., 2 1/2 ba. Open beam ceilings. Large fenced yard. Dogs OK. Many fruit trees. Fireplace. \$4000/mo. Lease. 310-403-3737. www.maliburentals.com.
 0226

Stunning ocean view from 4 bd., 3.5 ba. home just above Broad Beach. Available immediately. Furnished/unfurnished. \$10,000/mo. 310-435-6775, agent.
 0212

Condo for rent. Beautiful 2 bd., 2 ba., ocean view for lease starting May 6. \$3200/mo. 310-804-4062, contact Dana.
 0305

Malibu on the beach. Charming, tastefully furnished 3 bd., 2 ba. cottage, sunroom, fireplace. Short or long-term. Close in, sandy beach. \$6500/mo. Please call for appointment. 805-927-3473.
 0212

\$795/mo., small single apt. No drinkers, smokers, drugs or pets. Available now. Near Kanan and PCH. 310-457-2584.
 0212

Malibu Bay Club gated condos. Very clean and quiet bachelor apt. Free cable TV, telephone, high-speed Internet. Private entrance, balcony, Jacuzzi bathtub, 10' closet, parking, W/D. Oceanside, heated pool, hot tub. Month to month, \$1350/mo. 424-644-0070.
 0219

Charming 3 bd. home. Quiet El Nido area. Fireplace, vacuum system, yard, 2 garages, ocean view, new paint and carpet. All appliances. \$3100/mo., 310-456-8153.
 0212



RENTALS
Southwest Serene, miles of trails. Buff and Hensman Award-winning architect. Vistas bonitas, private, peaceful, spacious, 4 1/2 acres, teak cabinets, horses OK, \$5850/mo. Pictures "A Southwest Home" are at http://homepage.mac.com/randyn/310-457-4405.
 0226

Pt. Dume Club. Light, bright, airy 3 bd./2.5 ba. home with high ceilings, open floor plan, spacious rooms. Great community with clubhouse, pool, spa and tennis court. \$3750/ mo., agent—Susan Monus, 310-589-2477.
 0226

RV/trailer space, full hookups, \$800/mo. Also, 2 bd. big mobile home, fireplace, kitchen, den, new carpets, \$1600/mo. Cable, pool, Jacuzzi, laundry. Very quiet, secluded, peaceful. Very unique. 310-804-5119.
 0212

Reduced! Ocean view 2+2 designer interior. Steps to beach. 5 minutes to Santa Monica. All new cabinets, appliances, granite, marble, hardwood floors, high ceilings. W/D in condo. Large ocean view patio. Garage. 1200 sq. ft. Quiet, safe. \$3980/mo. 310-702-1154, www.malibucoastline.com.
 0212

Pt. Dume. Gates 4 + 4 Mediterranean. Ocean view master. Large yard. Pool/spa. Walk to beach. Short or long term. \$6900/mo. long term. Call for short term rate. Lynette, bkr., 310-266-6264.
 0219

Beachfronter Townhome Apartments. Right on the promenade and Surfers Point in Ventura. Make coming home your special getaway everyday! Come see for yourself! 805-643-8555.
 0219

Malibu adjacent 3 bd., 2 ba. condo. Gated complex, swimming pools and Jacuzzis. 4240 Lost Hills Rd., #1403. Fireplace, garage, vaulted ceilings, quiet location. Can include W/D and refrigerator. \$2099/mo., 818-599-1086, 818-880-8075.
 0402

RENTALS
Historic 1926 Malibu home. Must see! Las Flores Cyn. Close to PCH. Charming 3+2+office. Ocean/canyon views. Fireplace, hardwood floors, granite, stained glass. \$5500/mo. Electric/water included. Call Paul, 310-456-3728.
 0212

Villa Malibu, dual master suites, 2 ba. Expansive living room w/fp. Fresh paint/new carpet. Washer/dryer, ss appliances, onsite management/maintenance, low security deposits OAC. Full-service amenities, concierge, chauffeur, beach porter, pool, fitness ctr. \$3500/mo. Call Matt, 310-457-8484.
 0212

Malibu, \$1250/mo. Surfrider Beach ocean view studios. Newly remodeled. Includes utilities, cable and parking. Laundry room on premises. 310-456-6559.
 0305

Prime beach apartments, near central Malibu, tide pools, snorkeling, fireplace, clean and bright, Santa Monica to Catalina ocean view. One-bd., \$1900/mo. No dogs, references required. 310-456-6736.
 0305

Ocean views, 2 story guest house, gated, Malibu estate. 2 bd., 2 ba., Jacuzzi, granite, travertine, hardwood floors, 2 garages, huge deck, and French doors to pool. Horses and pets considered. \$2800/mo., 818-991-1879.
 0226

Wonderful 2 bd., 2 1/2 ba. Pt. Dume townhome in a gated community with an ocean-view patio, loft, fireplace, skylights and Riviera 3 beach key. \$3950/mo. Susan Monus, Coldwell Banker, 310-589-2477.
 0226

SERVICES
SECRETARY
 30 Years in Malibu
Carol on call
310-457-3120
 Scripts, Book Ms.
 Resumes, Mailing Lists
 Legal Briefs, Notary, Editing
 Ghost Writing, Member WGAw

SERVICES

PHOTOGRAPHY
 PHOTOGRAPHY
 Weddings and Events
FRANK LAMONEA
818-706-1138
 PHOTOGRAPHY
 PHOTOGRAPHY

SITUATION WANTED

Estate manager for your property! Will care for your home, garden, pets, in exchange for small guest quarter. I am a SF actress/teacher, professional demeanor, responsible, considerate, neat, quiet, with a healthy lifestyle. Great local references. Call 310-924-2158.
 0212

TREE TRIMMING

Environmental Tree Care, Inc. Complete tree service and fully insured. Serving the community for the past 20 years. Give us a call for professional service. Lic. #725258. 310-456-5969.
 042409

VACATION RENTALS

Palm Springs mid-century home. 3 bd., 2 ba., sunny south Palm Springs. Heated, kidney-shaped pool, golf, hike, shop, dine in charming resort town. 2 hours from L.A., \$1500/week, 310-415-3516.
 0212

Skating and snowboarding. Mammoth Mountain townhouse. Winter weekends available. 4 bd., 3 full ba., comfortably sleeps 10. Indoor pool, Jacuzzi, fireplace, W/D, maid service. Weekends, \$375/night. Sun.-Thurs., \$200/night. 818-599-1086, 818-880-8075.
 0319

The BULLETIN BOARD

SERVICES

MIRRORS
 -CUSTOM-
SHOWER DOORS • WINDBREAKS
 • REASONABLE RATES •
MALIBU GLASS 456-1844

Malibu Maintenance
 Residential/Commercial
Complete Housecleaning
 Reasonable Rates
 Call Now For
CLEANING SPECIALS
 • Bathrooms • Windows • Carpets • Floors • New Construction
 • Local References • Weekly/Monthly Service • Schedules Available
310-810-2389 • 310-387-5408
 20 years local experience

SCREENS
 Bring in & save
 ★ Window Replacements ★
MALIBU GLASS
 3547 Winter Canyon Road 456-1844



POINT DUME
Malibu: Pristine remodeled residence situated on 1.5 flat acres. 4BD main house, 2BD guest house. Park like expansive grounds. Very private and serene. Private beach rights.
\$2,675,000
Matt Rapf 310.456.5621



MALIBU'S ULTIMATE RANCH
Malibu: Only 8 minutes from Zuma Beach is 320 acres of Malibu's finest ranchland. 2 homes, lakes, tons of flat & useable. Great ocean views. Potential for 3 vineyard/equestrian estates.
\$17,900,000
Kirk Murray 310.456.5621



LAS FLORES CANYON
Malibu: Very private, well-maintained & landscaped 4+3 1/2 home. Huge ocean & mtn views. Flat screen & surround sound equip incl. Quiet street, room for horses.
\$1,299,000
Jack Pritchett 310.456.5621



MASTERPIECE ON THE SAND
Malibu: Stunning three level masterpiece on Malibu Road. Offering 4 bedrooms, 4.5 baths with multiple oceanfront decks. Open floor plan, gourmet kitchen, private rooftop deck and garden.
\$11,950,000
Jeff Chertow/Dan Dillon 310.456.6771



PARADISE COVE WITH BEACH ACCESS
Malibu: Fabulous 2 bedroom, 2 bath MFG home in Paradise Cove. Located on one of the larger lots, has beach access to Paradise Cove and Point Dume Beaches. Charming and private.
\$545,000
Shen O Schulz 310.456.6771



AFFORDABLE MALIBU LIFESTYLE
Malibu: Experience Paradise Cove. Once there, you'll never leave. 2 bedroom, 2 bath, plus bonus room. 1350 sq. ft. Nice location, lots of trees. Large fenced yard. Short walk to private beach.
\$520,000
Quint Carter 310.456.5621



PRIVATE PARADISE
Malibu: A private paradise tucked away in a sandy west Malibu cove. Gorgeous architectural creation. Two bedroom main house, 2 bedroom guest house. 125 ft of sandy frontage.
\$13,300,000
Matt Rapf/Andy Lyon 310.456.5621



POINT DUME
Malibu: Charming Spanish residence in Point Dume set on 1.7 lush acres. 4 bedroom, 4 bath home with great views, high ceilings, loads of light. Private beach rights.
\$2,475,000
Matt Rapf/Jeff Chertow 310.456.6771



REMODELED MFG HOME
Malibu: Completely remodeled MFG home in Point Dume Club. 3 bedroom, 3 bath home with granite kitchen, large master, hardwood floors, new dual-pane windows, fireplace and gym. Financing available.
\$595,000
Shen O Schulz 310.456.6771



ONE OF A KIND BEACH COTTAGE
Malibu: Two bedrooms, huge loft, two baths, private setting. Gourmet kitchen, office with internet, separate laundry room, decorative decks, spa tub, mature landscape, all totally fenced.
\$549,000
David Carter 310.456.5621



PT. DUME CLUB
Malibu: Fantastic ocean, mountain and sunset views from this well priced, move-in condition home. 2 bedrooms, 2 baths with a bonus room. Garden, private deck, open floor plan. Low space rent.
\$475,000
Kirk Murray 310.456.5621



BEAUTIFUL ARCHITECTURAL
Malibu: Stunning 4 bedroom architectural home with walls of glass to capture the gorgeous views of Catalina, Pt Dume and Surfrider beach. Adjacent vacant lot is included. 3 car garage.
\$3,200,000
Jeff Chertow 310.456.6771



WHITewater ARCHITECTURAL
Malibu: Majestic architectural masterpiece with panoramic coastline views. 5 bedroom, 6.5 bath, 6500 sq. ft., 2 story guest house, large pool, tennis court. Light, open and wonderful indoor, outdoor flow.
\$5,450,000
Matt Rapf/Andy Lyon 310.456.5621



80 ACRE ESTATE PROPERTY
Malibu: Completely private 80 acre compound entirely surrounded by parkland. Endless views in every direction. Main house, guest house, horse corrals and other out buildings. A must see!
\$6,900,000
Chris Frost/Brand Didden 310.456.5621



COMPLETELY REMODELED
Pacific Palisades: Completely remodeled new kitchen, baths, roof, windows and doors. Large master suite w/ocean view and huge walk-in closet. Lushes landscape one one of blocks largest lots.
\$2,350,000
Shen Schulz 310.456.6771



SUNSET PLAZA HIDEAWAY
Los Angeles: Behind private gates atop famous "bird-streets" sits this contemporary home with spectacular views. Motor court, guest wing, pool & media room. Exquisitely landscaped with indoor/outdoor design.
\$7,799,000
Brant Didden 310.456.5621



BEACH FRONT
Malibu: Beautifully appointed home with ocean-side decks, views from all rooms, outdoor entertaining area with BBQ, bar and lounge. 3 bedroom, 3.5 bath. Step out onto beach.
\$18,000/month
Elizabeth Campbell 310.456.5621



MID-CENTURY MODERN HOUSE
Malibu: Malibu Road. 2 bedroom, 2 bath. Master bedroom with ocean view and private deck. Offers the ultimate Malibu experience!
Available now!
\$14,000/mo annual. \$25,000/mo Summer rate.
Shen O Schulz 310.456.6771



FULLY FURNISHED CONDO ON LATIGO BEACH
Malibu: Tivoli Cove complex. 2 bedroom, 2 bath and loft. Gated resort living. Premier location near pool/spa. Ocean and city lights view.
\$4,100/mo annual
Shen O Schulz 310.456.6771



4.5 ACRES ANACAPA VIEW
Malibu: Whitewater ocean views, sunsets, city lights. See it all from this spectacular property. Huge frontage. All reports available. Priced to sell!
\$1,700,000
Chris Frost 310.456.5621



OCEAN VIEW PROPERTY
Malibu: Spectacular 5 acre property. Full architectural drawings and coastal approval for 5960 sq. ft. house, guest house and 3 car garage. Many permits ready to be pulled!
\$1,500,000
Chris Frost/Brant Didden 310.456.5621



1.6 ACRES ON MALIBU ROAD
Malibu: Magical ocean view property. Includes 3 separate and adjacent parcels with 3 conditional certificates of compliance. Deeded beach rights, geology reports and survey available.
\$3,500,000
Chris Frost/Brant Didden 310.456.5621



MALIBU PARK LAND
Malibu: Beautiful lot on Morning View Drive with final Malibu City and coastal commission approvals for approx. 6500 sq. ft. architectural style home. Designed by David Paul Urmston.
\$1,370,000
Shen O Schulz 310.456.6771



PARADISE COVE
Malibu: Rare offering. Cleared pad in bluff section of Cove with plans for 1300 sq. ft. custom home, or bring in manufactured home. Great location on street with comps over 900K. Small ocean views. Low space rent.
\$495,000
Kirk Murray 310.456.5621



FLAT 10 ACRE OCEAN VIEW PROPERTY
Malibu: Close in, ocean view property to build ultimate Malibu Estate. 10 almost all useable acres with wide open views. Plenty of privacy. This won't last!
\$4,200,000
Chris Frost & Brant Didden 310.456.5621



PRIVATE WITH VIEWS
Malibu: 3/4 acre lot in private and quiet neighborhood. Sensational ocean and city light views. Active regional planning approval and architectural plans for 2400 sq. ft. SFR.
\$159,000
Chris Frost/Brant Didden 310.456.5621



OCEAN VIEW BUILDABLE LOT
Malibu: Adjacent close-in lots with stunning views of the ocean and mountains. Reports and plans for a 4,600 sq. ft. modern design home by renowned architect Vitus Matare.
\$389,000
Chris Frost/Brant Didden 310.456.5621



CENTRAL MALIBU
Malibu: 2.9 acres with views of Surfrider and Malibu Pier. Gated with designs ready for a new home. La Costa Beach Club and tennis rights. Full reports.
\$895,000
Chris Frost/Brant Didden 310.456.5621



OVER 5 ACRES
Malibu: Ocean & city light views from 3 contiguous parcels. Multi million dollar neighborhood. Close to all utilities. Great access to west side and West Valley. Very private.
\$795,000
Chris Frost/Brant Didden 310.456.5621



MID CENTURY MODERN RANCH
Topanga: Exquisitely designed home set perfectly on five private acres. Open views with true indoor/outdoor feel. Pool, riding and boarding area. Mature landscaping. A must see!
\$3,125,000
Brant Didden/Chris Frost 310.456.5621