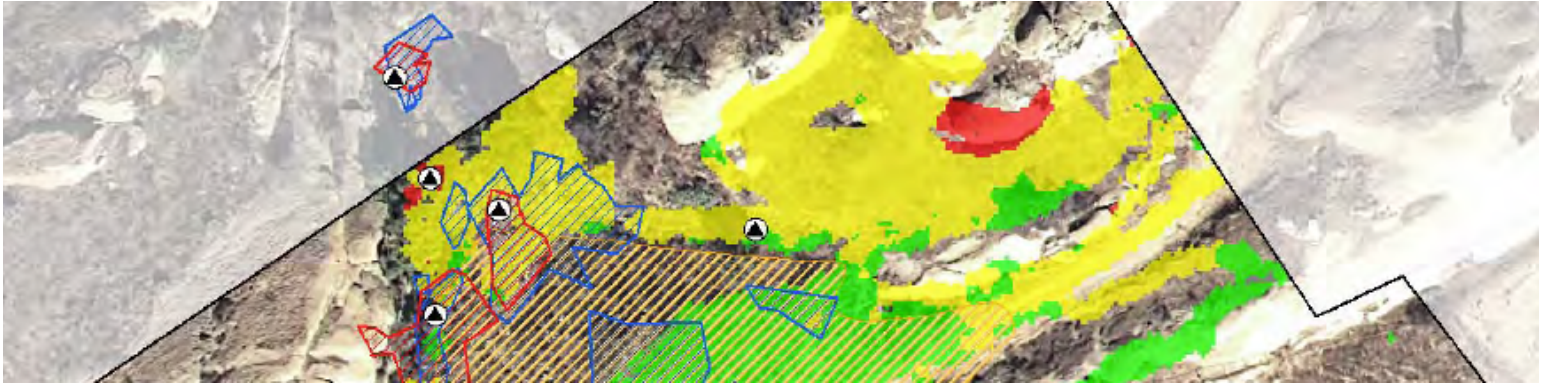


United States Environmental Protection Agency (EPA) Region IX
 Andrew Bain and Mary Aycock

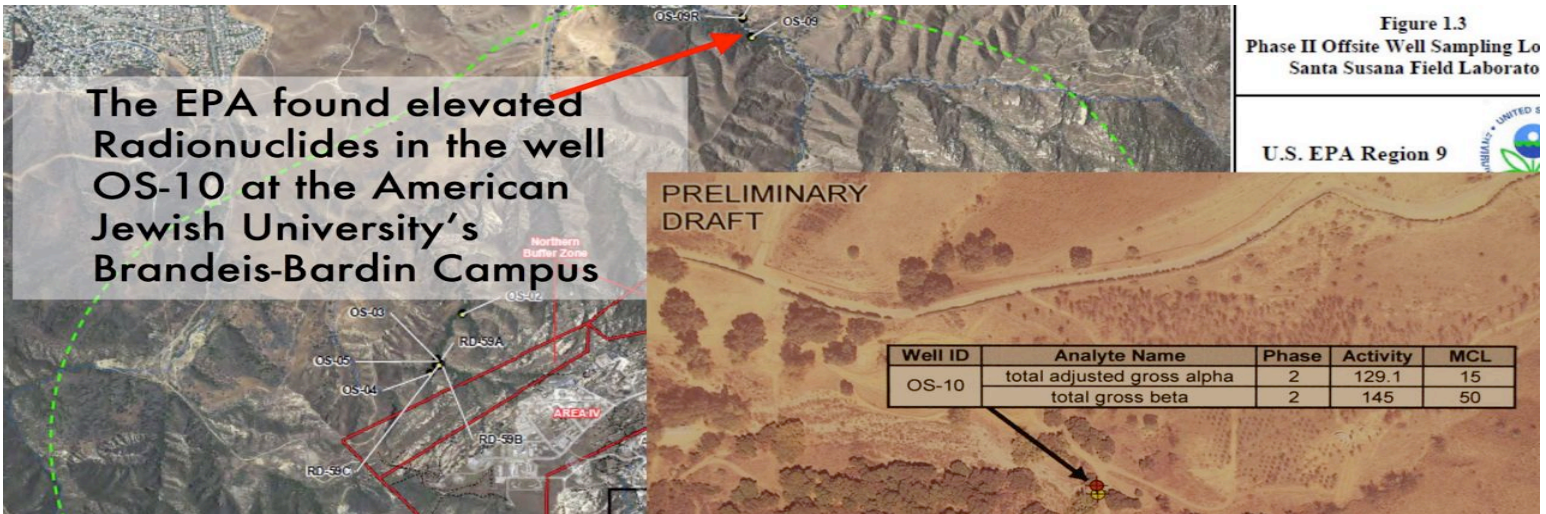
7/2/2012

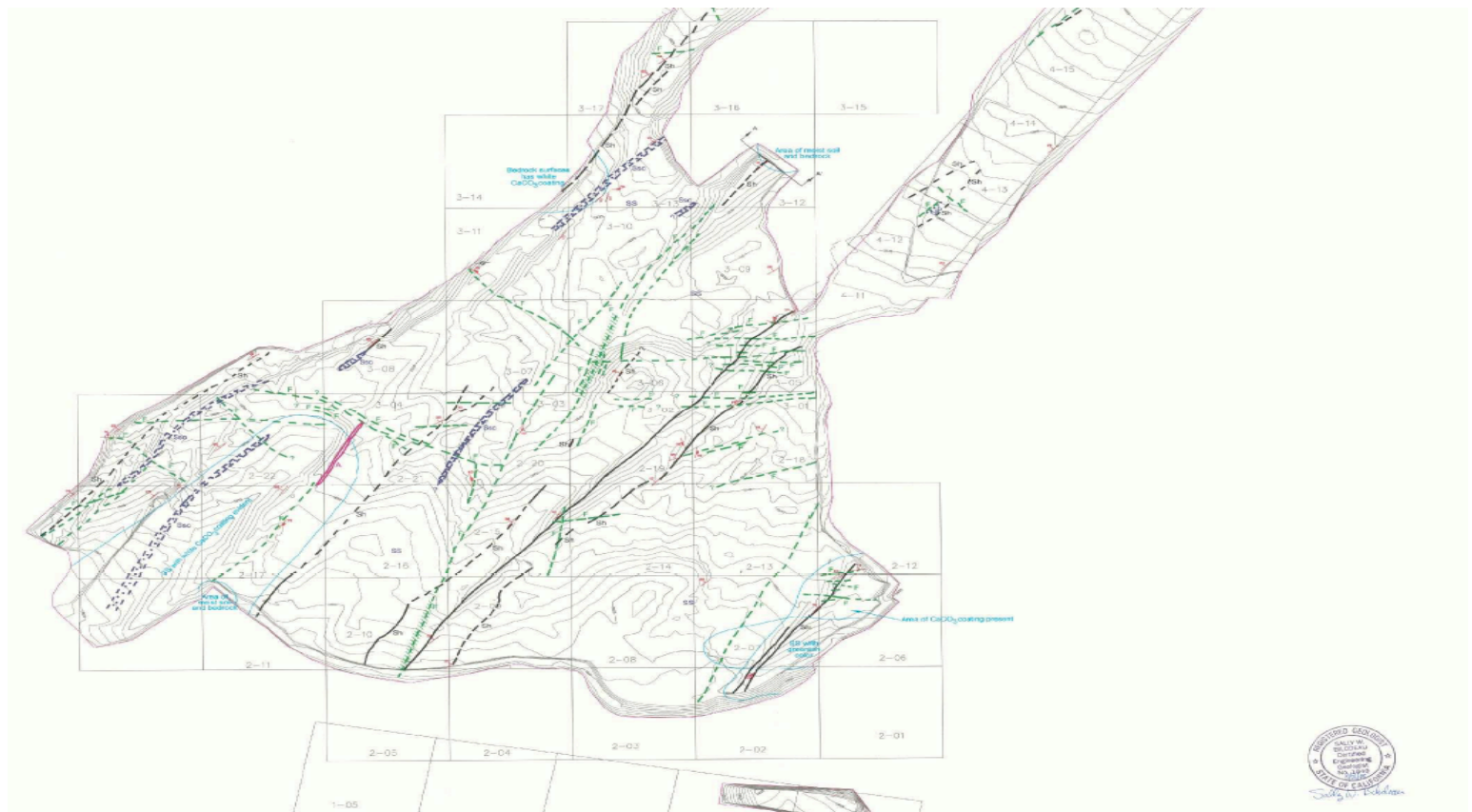


Dear EPA,

Please consider these ACME comments on the Technical Memorandum Subarea 8 Round 1 Soil Sample Results, AREA IV Radiological Study, Santa Susana Field Laboratory, Ventura County, California – EPA Contract Number: EP-S7-05-05–Task Order No. 0038 Prepared for EPA by Hydrogeologic, Inc. June 15 of 2012.

The above photo is from Figure 2 of the above referenced document, the Building 56 Landfill area. Samples of Cesium 137 and Plutonium 239/240 are above the Radiological Trigger levels (RTL's) and this area slopes down offsite into the American Jewish University's Brandeis-Bardin Campus. Step-outs onto their parcel should be performed, as there has been Gamma in their groundwater at dangerous levels. More sampling at depth is needed at this landfill, we need to see how deep the contamination sits.





<p>DRAWING PREPARED BY SAGE CONSULTANTS INC.</p> <p>SAGE Consultants, Inc. 10000 Wilshire Blvd., Suite 1000 Beverly Hills, CA 90210 Tel: 310-277-1111</p> <p>Shaw Shaw Environmental & Infrastructure, Inc. 10000 Wilshire Blvd., Suite 1000 Beverly Hills, CA 90210 Tel: 310-277-1111</p>	<p>THE BOEING COMPANY ROCKETDYNE PROPULSION AND POWER SSFL AREA IV FORMER SODIUM DISPOSAL FACILITY (FSDF) INTERIM MEASURE</p> <hr/> <p>DRAWING 6 GEOLOGIC MAP OF FSDF AND UPPER CHANNEL B</p> <p>DRAFT</p>
--	---

We need to avoid the actions of the past interim measures, in one case the Former Sodium Disposal Facility aka FSDF (Above Geological Map) as if we don't go down deep enough and make sure all the fault conduits are flushed we can see evidence of recontamination. The area of the FSDF should be properly remediated before any actions take place downhill at the Building 56 Landfill.

Thank you for consideration of these comments to the final document.

The Community looks forward to a continuing relationship with EPA to Ensure a Proper Cleanup of the Santa Susana Field Laboratory, it's Related Facilities and the Surrounding Communities.

William Preston Bowling
 Founder/Director ACME
 (Aerospace Contamination Museum of Education)
 P.O. Box 1636, Topanga Canyon,
 California 90290 <http://www.acmela.org/>