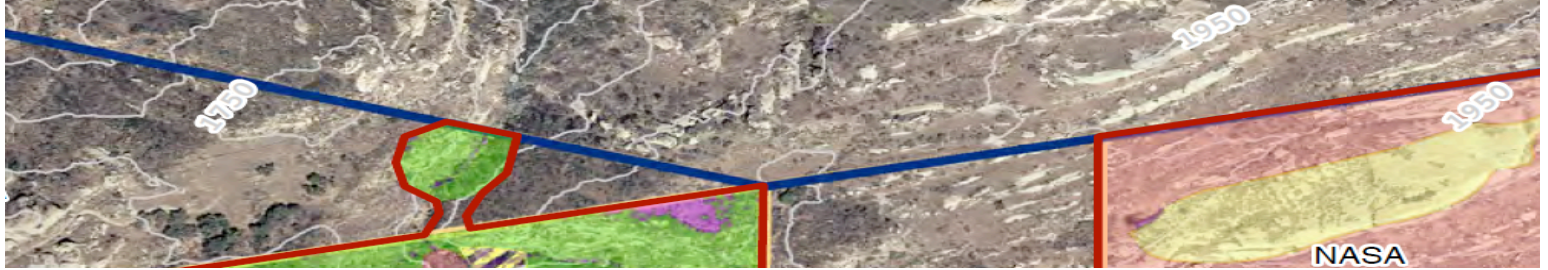


Cassandra D. Owens - Unit Chief, Industrial Permitting
 Los Angeles Regional Water Quality Control Board (RWQCB)

5/30/2012
 Via Electronic Mail

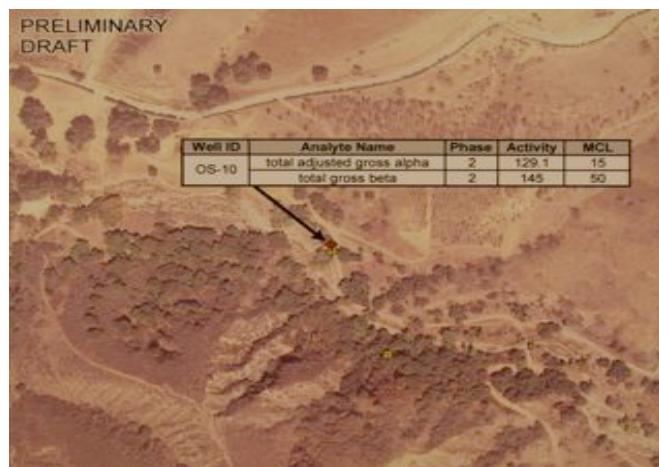
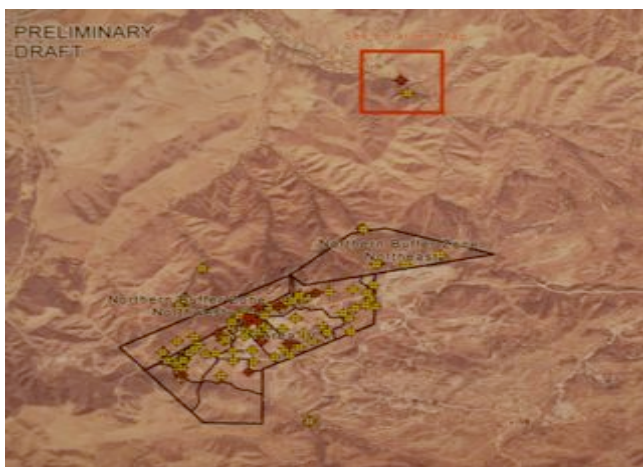


Dear Ms. Owens,

The above map is a of the National Pollutant Discharge Elimination System (NPDES) Outfall 009 at the Santa Susana Field Laboratory (SSFL) from the recently released National Aeronautics and Space Administration (NASA) Area of Potential Effects document...

http://www.acmela.org/images/NASA_SSFL_Map_of_Area_of_Potential_Effects_May_of_2012.pdf

Indicated by the yellow line that connects with the Boeing "Northern Buffer Zone" (NBZ), is the approximate location of Outfall 009. This map proves the hypothesis that ACME brought to the RWQCB in years past that the contamination traverses around the outfall to bypass detection. This outfall needs to be relocated or an additional outfall be constructed further downstream. More proof on the migration of contamination from the SSFL is the Draft Final Groundwater Report, AREA IV Radiological Study, Santa Susana Field Laboratory, Ventura County, California - EPA Contract Number: EP-S7-05-05 - Task Order Number: 0038 - Prepared for EPA by HGL, Inc. May 15 of 2012 (Below Photos). Now that we start to understand this new data the monitoring system for the Northern Drainage at the SSFL needs to be redone in order to protect Human Health and the Environment.



In the Draft Groundwater Report, was elevated gross alpha and beta in the American Jewish University's Brandeis-Bardin Campus

The Community looks forward to a continuing relationship with the RWQCB to Ensure a Proper Cleanup of the Santa Susana Field Laboratory, it's Related Facilities and the Surrounding Communities.

William Preston Bowling
 Founder/Director - ACME (Aerospace Contamination Museum of Education) <http://www.acmela.org/>