



Ventura County Cultural Heritage Board Agenda

Monday, September 24, 2012

County of Ventura • Resource Management Agency • Planning Division

800 S. Victoria Avenue, Ventura, CA 93009-1740 • (805) 654-2478 • ventura.org/rma/planning

Notice is hereby given that on Monday, September 24, 2012; the Ventura County Cultural Heritage Board will convene at 12:30 p.m. for a meeting at the entrance parking lot of the Santa Susana Field Laboratory located at 5800 Woolsey Canyon Road, Canoga Park. Then, the Board members and County staff will tour the Santa Susana Field Laboratory. The Board will reconvene their meeting at 3:00 pm at the entrance parking lot of Santa Susana Field Laboratory. Members of the public are welcome to attend the meeting at the entrance parking lot.

1. ROLL CALL

Patricia Havens, Ricki Mikkelsen, John Kulwiec, Don Shorts, Gary Blum, Stephen Schafer, and Miguel Fernandez

2. ORAL COMMUNICATIONS

Discussion is limited to items not on this agenda which are within the purview of the Board. Each speaker is allowed 5 minutes. Board may question the speaker but there will be no debate or decision. Staff may refer the matter for investigation and report.

3. APPROVAL OF MINUTES

None

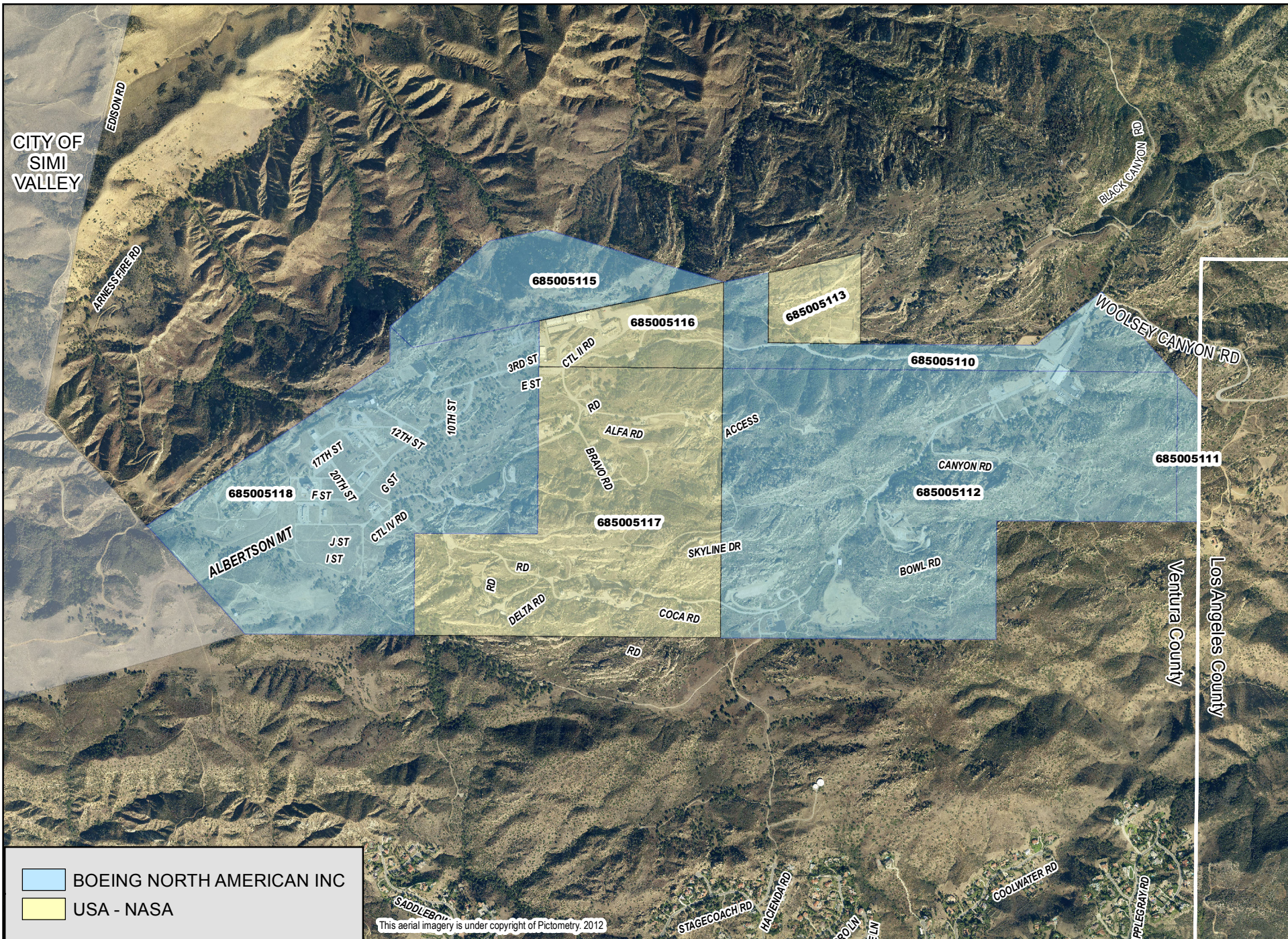
4. CONVENE THE MEETING OF THE VENTURA COUNTY CULTURAL HERITAGE BOARD

- a) Tour of the Santa Susana Field Laboratory located at 5800 Woolsey Canyon Road, Canoga Park.

No Action

5. MEETING ADJOURNMENT

In Compliance with the Americans with Disabilities Act, if you need special assistance to participate in this meeting, please contact Nicole Doner at 805-654-5042. Reasonable advance notification of the need for accommodation prior to the meeting (48 hours advance notice is preferable) will enable us to make reasonable arrangements to ensure accessibility to this meeting.



- BOEING NORTH AMERICAN INC
- USA - NASA

This aerial imagery is under copyright of Pictometry, 2012



Ventura County
Resource Management Agency
Information Systems
Date Printed: 09/17/2012

SANTA SUSANA FIELD LAB SITE

0 1,750 3,450 Feet

Disclaimer: this map was created by the Ventura County Resource Management Agency, Mapping Services - GIS, which is designed and operated solely for the convenience of the County and related public agencies. The County does not warrant the accuracy of this map and no decision involving a risk of economic loss or physical injury should be made in reliance therein