

CHEMICAL SOIL BACKGROUND STUDY for the SANTA SUSANA FIELD LABORATORY

Resolving Key Issues - Moving Forward

SSFL Program Team

Department of Toxic Substances Control

Doug Sheeks: (916) 255-3593 / dsheeks1@dtsc.ca.gov

Susan Callery: (818) 717-6567 / scallery@dtsc.ca.gov

CHATSWORTH

APRIL 7, 2010

Agenda Topics

- **Chemical Background Study Workplan(s)**
 - **Completion and Implementation**
- **Consultant and Chemical Analytical Labs**
 - **Selection Criteria**
- **Background Study Sampling Locations**
- **Chemical and Radiological Studies**

Chemical Background Study Workplan(s) Completion & Implementation Under DTSC Oversight & Management

MWH

- **Revise and Finalize Workplan(s) – Based on DTSC & Public Comments**

Separate Consultant(s)

- **Fieldwork – Staking, Sampling, Archaeological**
- **Data Validation**
- **Statistical Analyses**
- **Results Report**

Note: Biologist for China Flat monitoring will be provided by the NPS.

Workplan Review Schedule Under DTSC Oversight & Management

- **30-Day Public Comment Period**
 - **Draft Workplan(s)**
 - **Field Sampling Plan-Sampling & Analysis Plan-Quality Assurance Project Plan**
- **15-Day Public Comment Period**
 - **Draft Sample Locations Addendum**
 - **Sample Location Maps**
 - **Limited supporting text**
 - **Sampling and analysis will follow workplan criteria**

Selection Criteria Consultant(s) & Labs

Selection Criteria Are Being Developed For Both

Process Needs Community Input

Selection Criteria Consultant(s)

- Evaluate previous or current contracts with the RPs
- Experience conducting similar work
- QA/QC system (audits, corrective actions, etc.)
- Personnel
 - Organization & Management
 - Qualifications & training
- Capacity & priority - to do the assigned work
- References
- Costs

Note: Interviews will be conducted.

Selection Criteria

Chemical Analytical Labs

- Evaluate previous or current contracts with the RPs
- Ability to meet Lowest, Reasonably-Achievable MRLs
- History of certification / accreditation
- History and results of audits / corrective actions (CA)
- Performance testing (results, trends, CA)
- QA/QC system (audits, data validation, records, CA)
- Personnel / management / organization / quals. / training
- Capacity / priority - to do the work
- Uses approved methods
- Meeting holding times
- Data reporting (packages, electronic deliverables)
- References
- Costs (structure, units)

Note: Interviews and audits will be conducted. Subcontractors will need to meet same criteria.

Selection Criteria

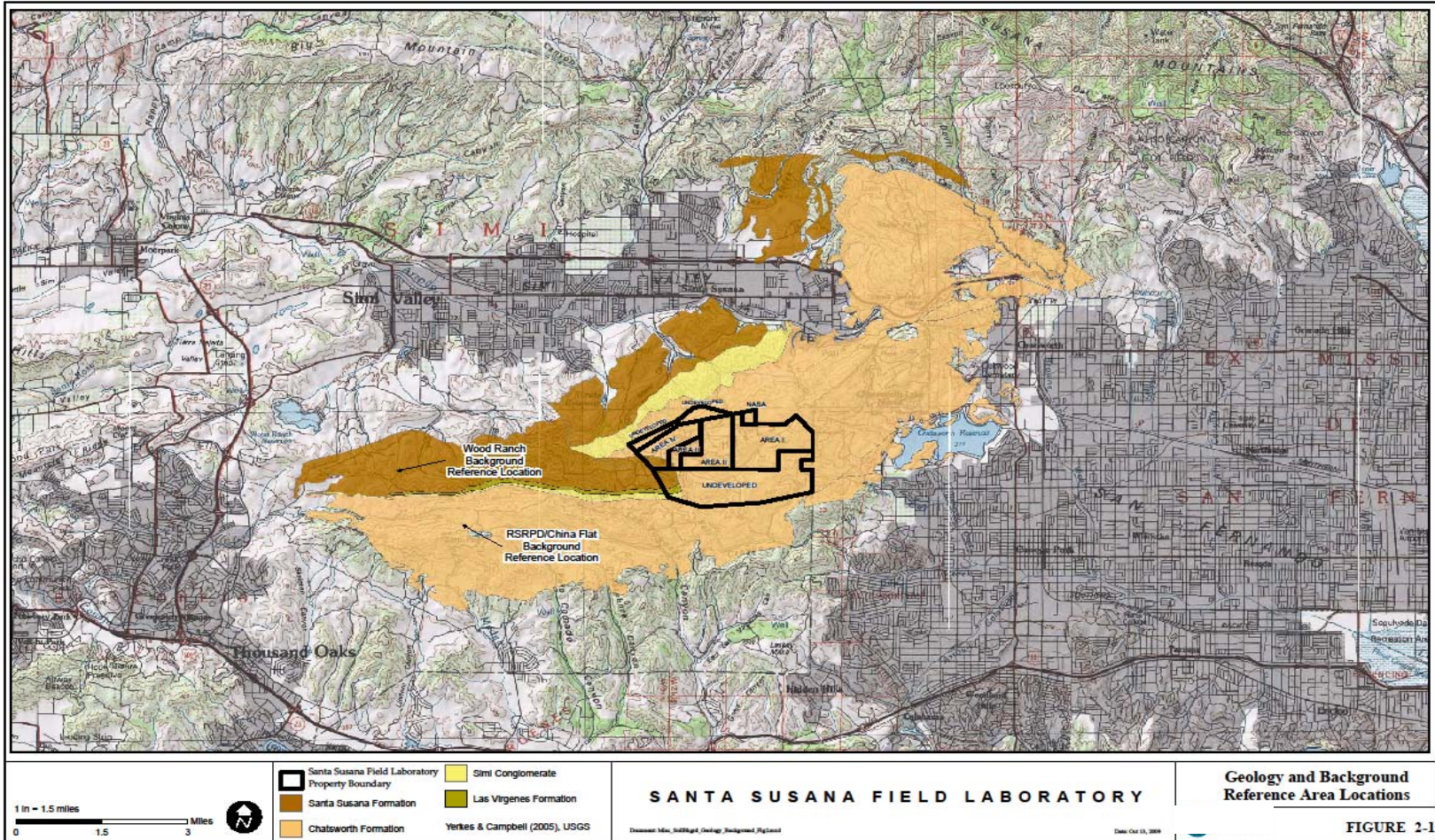
Sampling Areas and Locations

Following EPA guidance...

Criteria

- **Similar geology, landforms, fire history**
 - SSFL representativeness is key
- **Distance**
- **Minimal to no impacts**
- **Accessibility**

Regional Map



Rocky Peak Evaluation

- **Failed Criteria**
 - **Recent Fire History**
 - High probability of limited data application
- **Existing China Flat and Wood Ranch provide adequate data for evaluation**
- **Delay project schedule**
 - (min 2 to 3 months)

Chemical & Radiological Studies

Representativeness

- **Similar to SSFL, Chatsworth and Santa Susana-derived soils sampled**
- **Located ≥ 3 miles from SSFL**
- **Evaluate analytes for depositional and drainage differences**
- **Locations selected based on absence of confounding factors**
- **EPA is committed to collecting drainages samples**
 - **In conjunction with DTSC**

Next TWG Meetings

Targets: Early and Late May:

- **Discuss Consultant-Selection Process and Criteria**
- **Discuss Labs and Method Reporting Limits (ECL)**
 - **Early May**
- **Discuss statistical methods and tools (Dr. Mahmood)**
 - **Late May**

Current Project Status

Initial Project Planning:

- ☑ Contracted independent statistician

Background Location Evaluation and Selection:

- ☑ Multiple site visits with community assistance
- ☑ Secured access permits for three areas to SW

ONGOING:

- ☑ Develop Sampling Analysis Rationale
- ☑ Develop Chemical Analysis Rationale
- ☑ Develop Field Sampling and Lab Analysis Procedures
- ☑ Develop Data Evaluation Procedures
- ☑ Develop Lab-Selection Criteria
- ☑ Develop Consultant(s) Work Scope(s) and Selection Criteria

FUTURE WORK:

- Continue community meetings to develop scope of work
- Select & Contract Consultant(s)
- Draft workplan submittal / public comment
- Location staking
- Soil sampling
- Select & Contract Analytical Labs
- Laboratory analysis
- Data validation, evaluation, and statistical analysis
- Reporting