

ROCKETDYNE

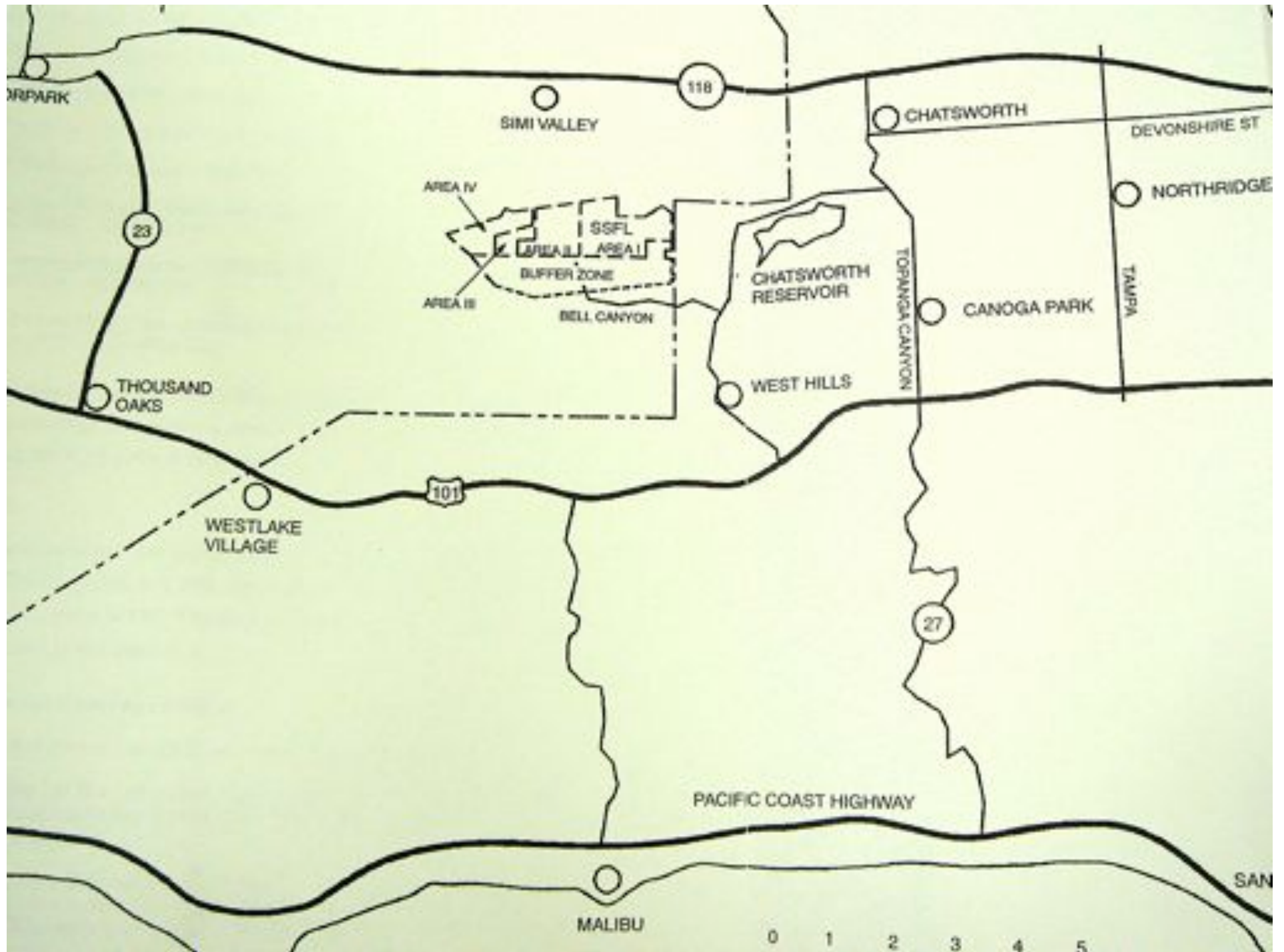
and the

L.A. River

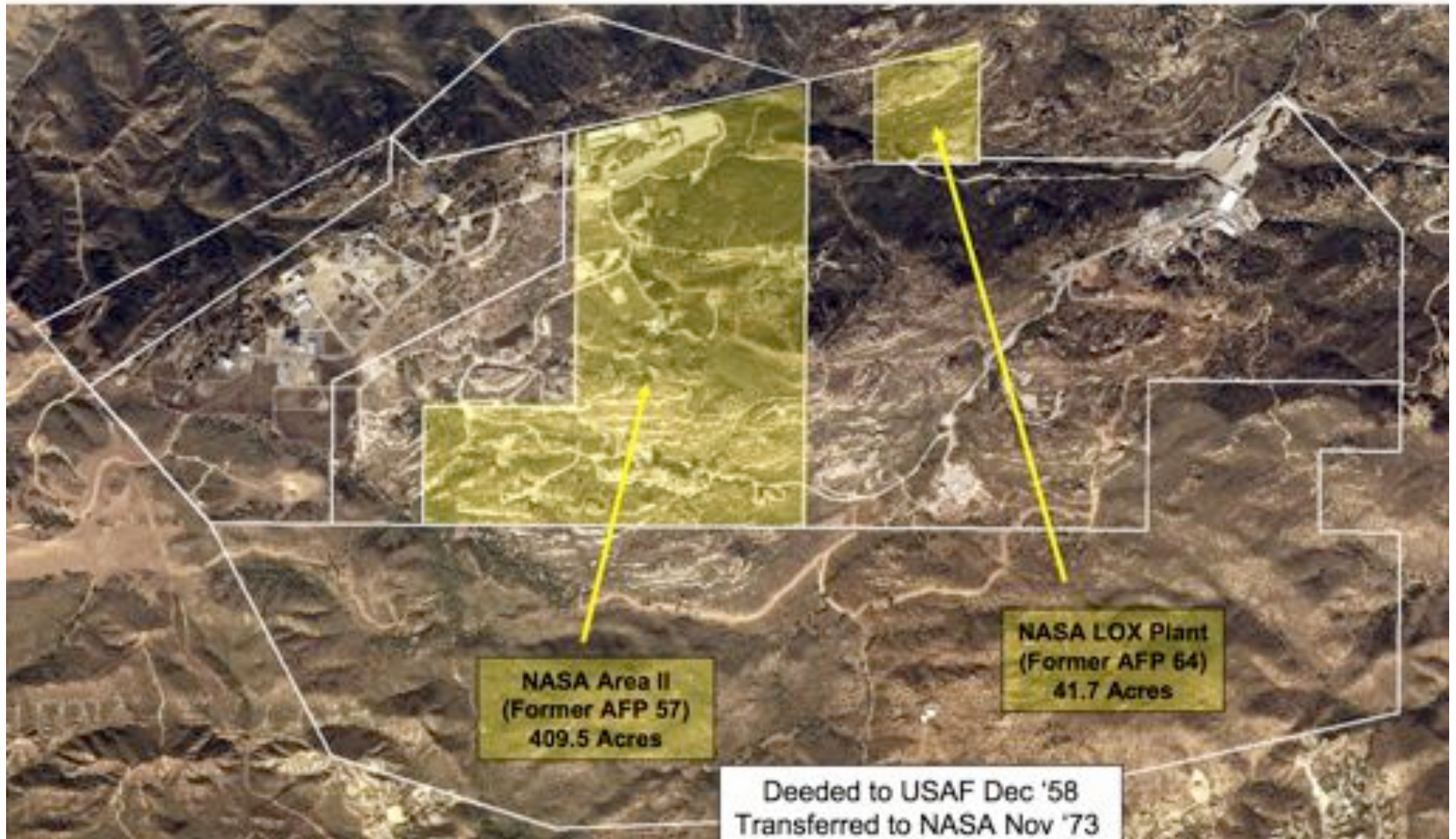
ACHELA.ORG

cleanuprocketdyne.org





Ownership



RADIATION
CAUTION



RADIATION
AREA

Caution



Radioactive
Material



Los Angeles Times

On The Internet: WWW.LATIMES.COM

FRIDAY, OCTOBER 6, 2006

Copyright 2006 L.A. Times Co. All Rights Reserved. Printed in the United States of America. This newspaper is published daily except on Sundays and public holidays.



Mourning and Media in Amish Country

A funeral procession for 21-year-old Martin Fisher, son of the girl slain in this week's attack on an Amish schoolhouse, moves through Amish country.

Study Says Lab Meltdown Caused Cancer

Scientists say details about the 1959 accident near Simi Valley continue to be withheld. Other contamination at the site is much clearer.

By AMANDA CUNHA
Times Staff Writer

The 1959 nuclear accident at a research lab near Simi Valley appears to have been much greater than previously suspected and could have resulted in hundreds of cancers in surrounding communities, according to a study released Thursday.

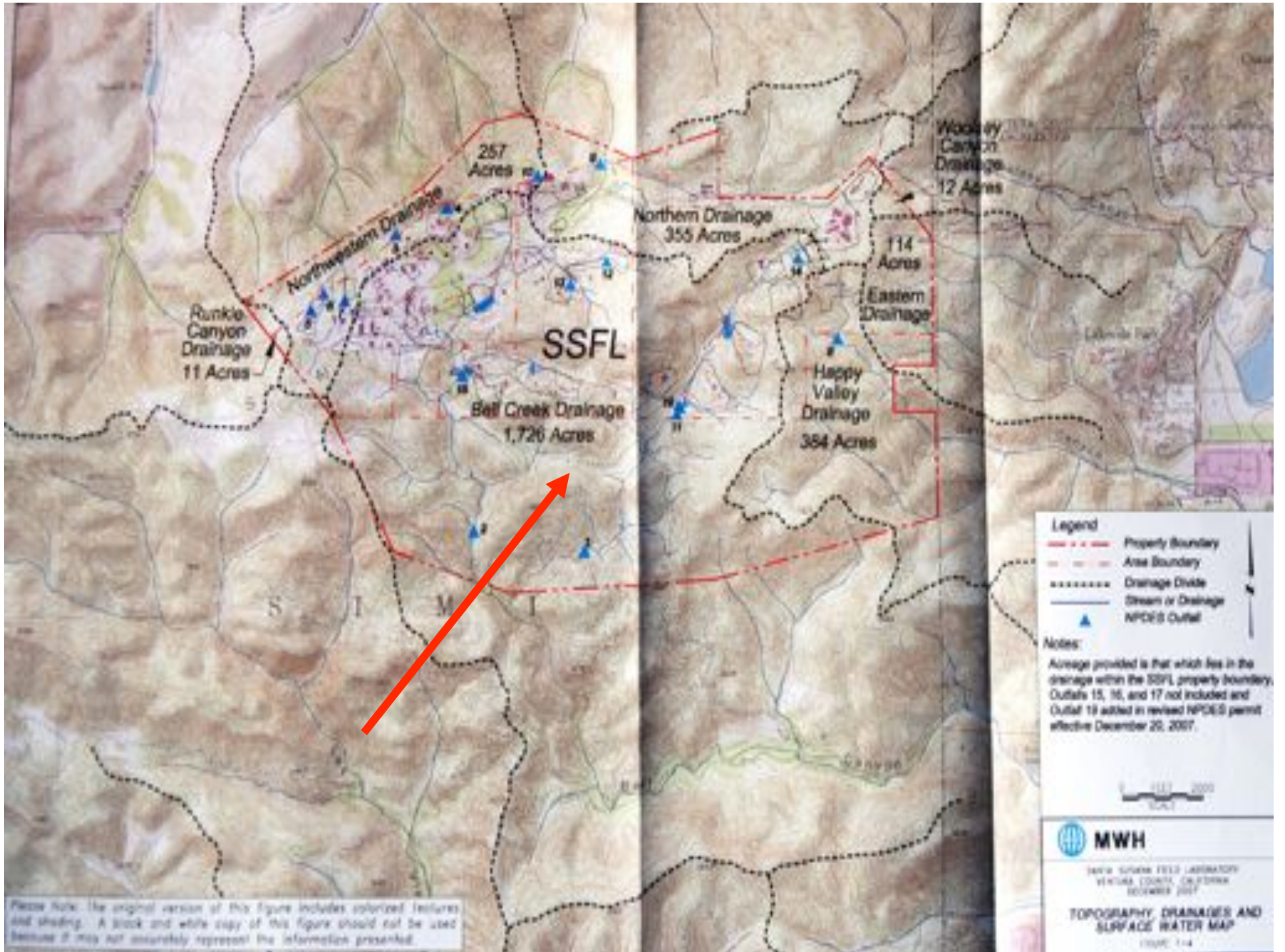
Chemical contamination from rocket engine testing at the site continues to threaten soil

ground and is a threat to the advisory panel.

The lab was opened in a strategic plan to industrialize Ventura County in 1948 as the nearby San Fernando and Simi valleys were on the verge of a postwar population boom. Originally operated by North American Rockwell, it conducted rocket research for the federal government for more than five decades before leaving the area in 1993.

The site has been the site of more than 100 fires and explosions. (See this edition, Page A21)

Path Is Risky for



Please Note: The original version of this figure includes colorized features and shading. A black and white copy of this figure should not be used because it may not accurately represent the information presented.





TCE is the cause of many Health Problems including Cancer.

TCE's effects on the human body

This chart shows how the body may be affected by exposure to trichloroethylene, or TCE. The chart reflects studies of people who worked with high levels of TCE, studies of rats and mice exposed to high levels of TCE and a few studies of people exposed to lower levels of TCE in drinking water. The information comes from a draft risk assessment released by the Environmental Protection Agency in 2001. After controversy erupted over its findings, the National Academy of Sciences was asked to review the report.

Exposure

Once a person is exposed to TCE – by drinking, breathing or touching the chemical – it is distributed via the circulatory system throughout the body, where it can accumulate in fat and other tissues.

Brain: TCE was once used as an anesthetic. In short, high doses, it has a similar effect to other solvents, alcohol, ethers, petroleum distillates and other halogenated solvents. It has been associated with dizziness, headaches, sleepiness, nausea, confusion, blurred vision, and weakness in several human studies.

Lymphatic system: In humans, TCE was associated with an elevated, but not statistically significant, risk of non-Hodgkin's lymphoma. Exposure was associated with lymphoma in mice.

Immune system: TCE is linked to immune system damage and increased incidence of autoimmune diseases.

Development: There is evidence of heart abnormalities in human and animal offspring exposed in the womb. Rat pups showed heart and eye malformations and behavioral changes.

Reproductive system: Some male workers showed possible reproductive effects, like reduced sperm counts. Links have been drawn to cervical and prostate cancer.

Liver: TCE can be toxic to the human liver, and has been linked to increased risk of liver cancer. Mice exposed to TCE developed tumors, but rats did not.

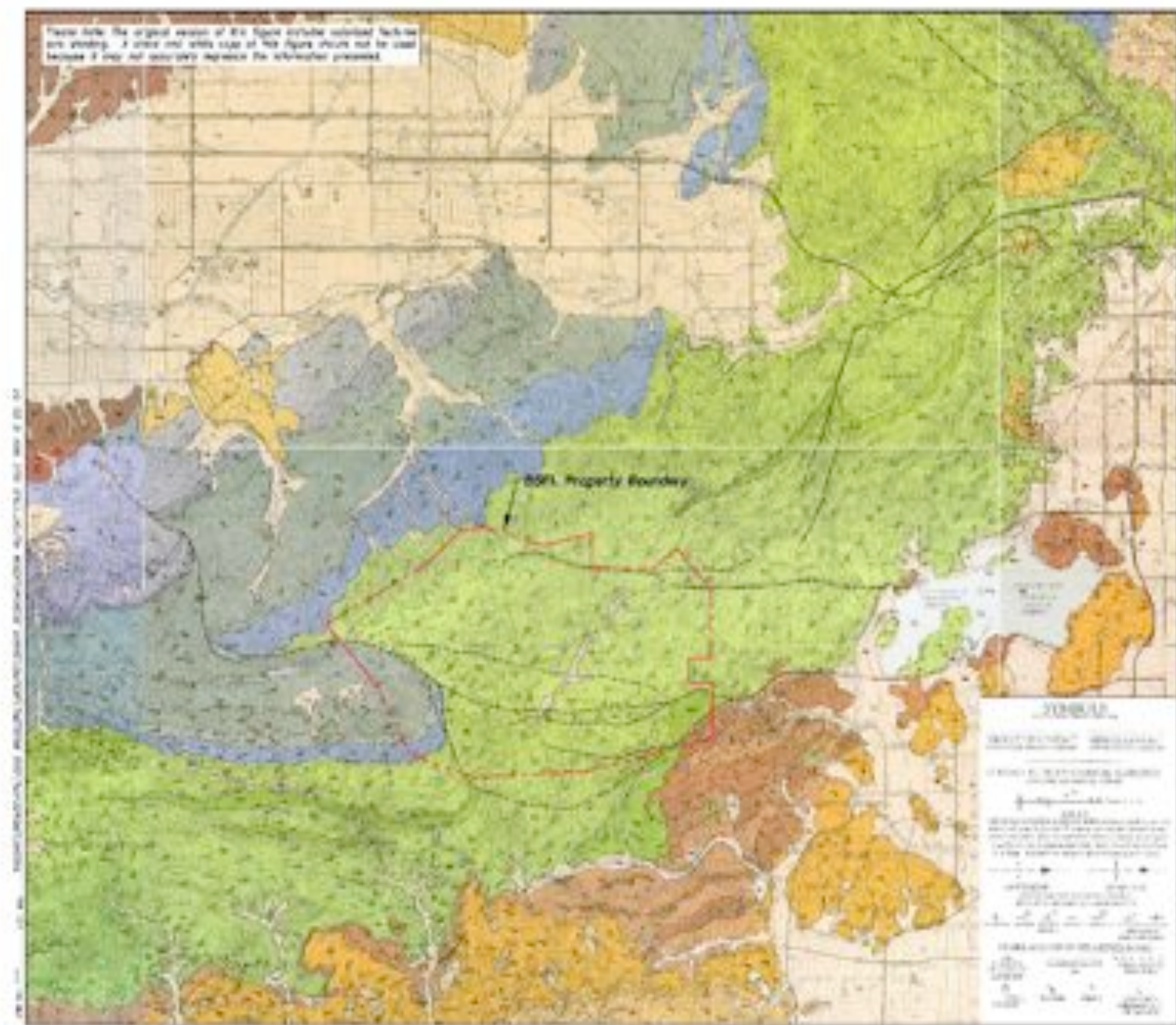
Pancreas: A possible increased chance of pancreatic cancer has been identified.

Kidney: Workers showed signs of kidney damage. TCE was associated with increased cancer risk in some human and animal studies.

Female reproductive organs

Male reproductive organs

This figure is the original version of this figure with the original features and colors. It is not a reproduction of the figure and should not be used because it does not accurately represent the information presented.



Legend

- Map Scale
- Geological Units
- BSPL Property Boundary
- Topographic Contours
- Water Features
- Faults
- Structural Features
- Other Symbols

SYMBOLS

- BSPL Property Boundary
- Water Features
- Topographic Contours
- Other Symbols

SCALE

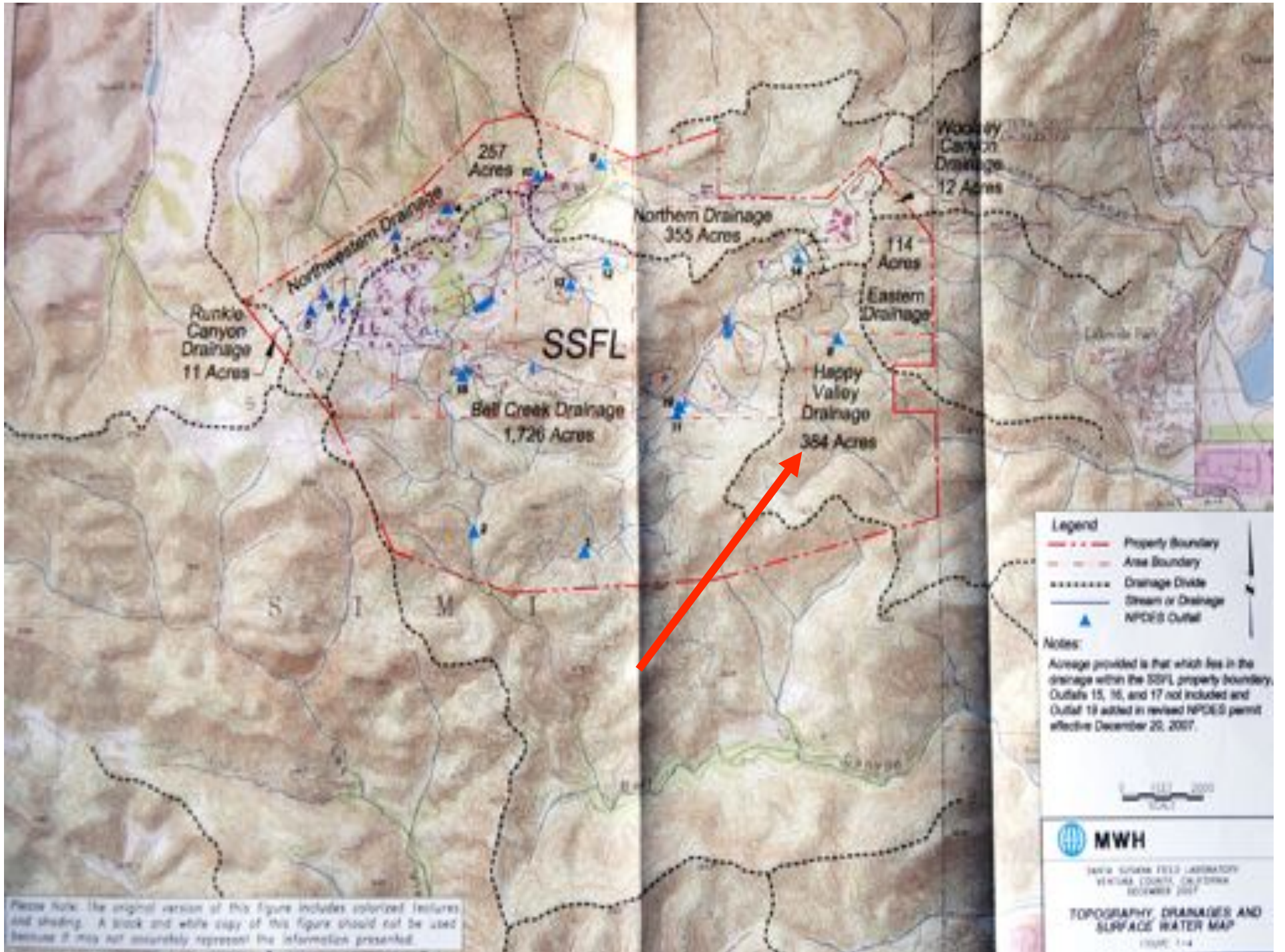
1:250,000

MWH

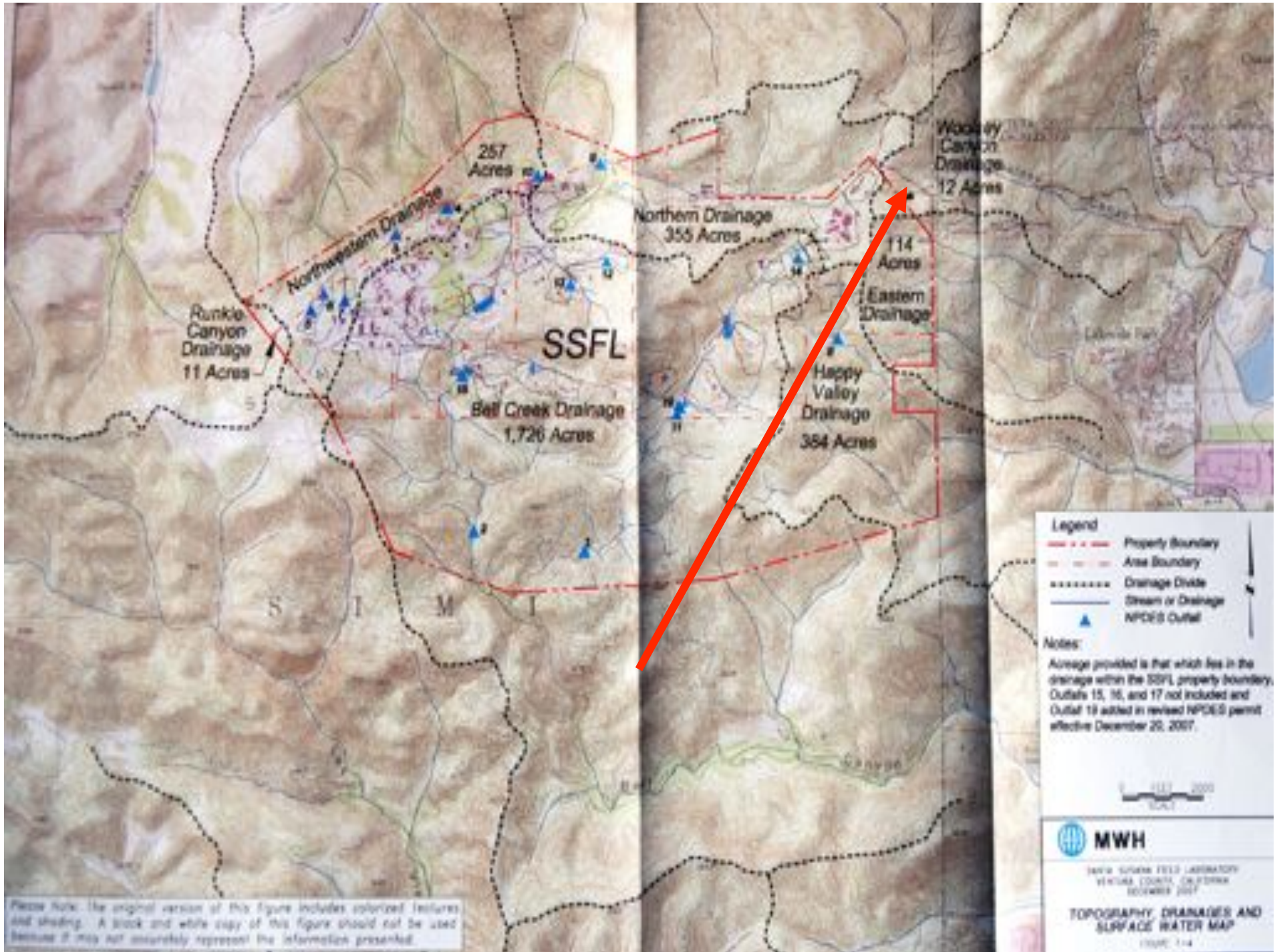
8000 BOWEN FIELD CAMPUS
ROCKY HILL, CALIFORNIA
JUNE 2004

REGIONAL GEOLOGIC MAP

SCALE 1:250,000



Please Note: The original version of this figure includes colorized features and shading. A black and white copy of this figure should not be used because it may not accurately represent the information presented.



Please Note: The original version of this figure includes colored features and shading. A black and white copy of this figure should not be used because it may not accurately represent the information presented.



February 18, 1972 - Placing reinforcing steel for
invert of open channel at the south tunnel portal.
Steel set is at Station 10+03.











AEROANALYSIS



Skyline

NORTH AMERICAN AVIATION, INC.



ATOMIC ENERGY

4300 Gallons in a 24 hour period into the L.A. River via Santa Susana Creek









Daily Food Service Deliveries

Former ATOMICS
INTERNATIONAL Nuclear
Research Facility

Westfield Topanga Shopping Center





CAUTION

WARNING
METALLIC SODIUM

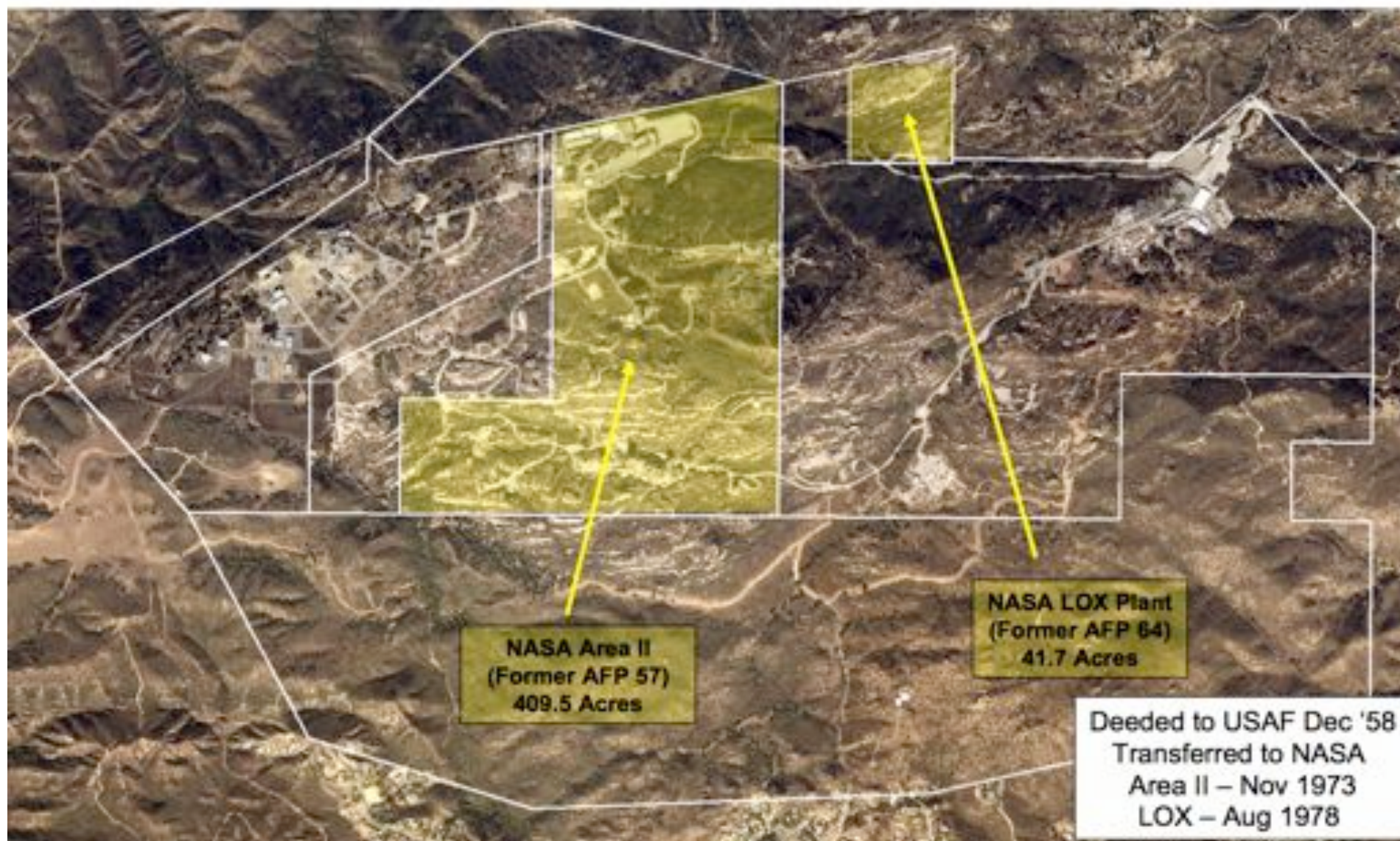


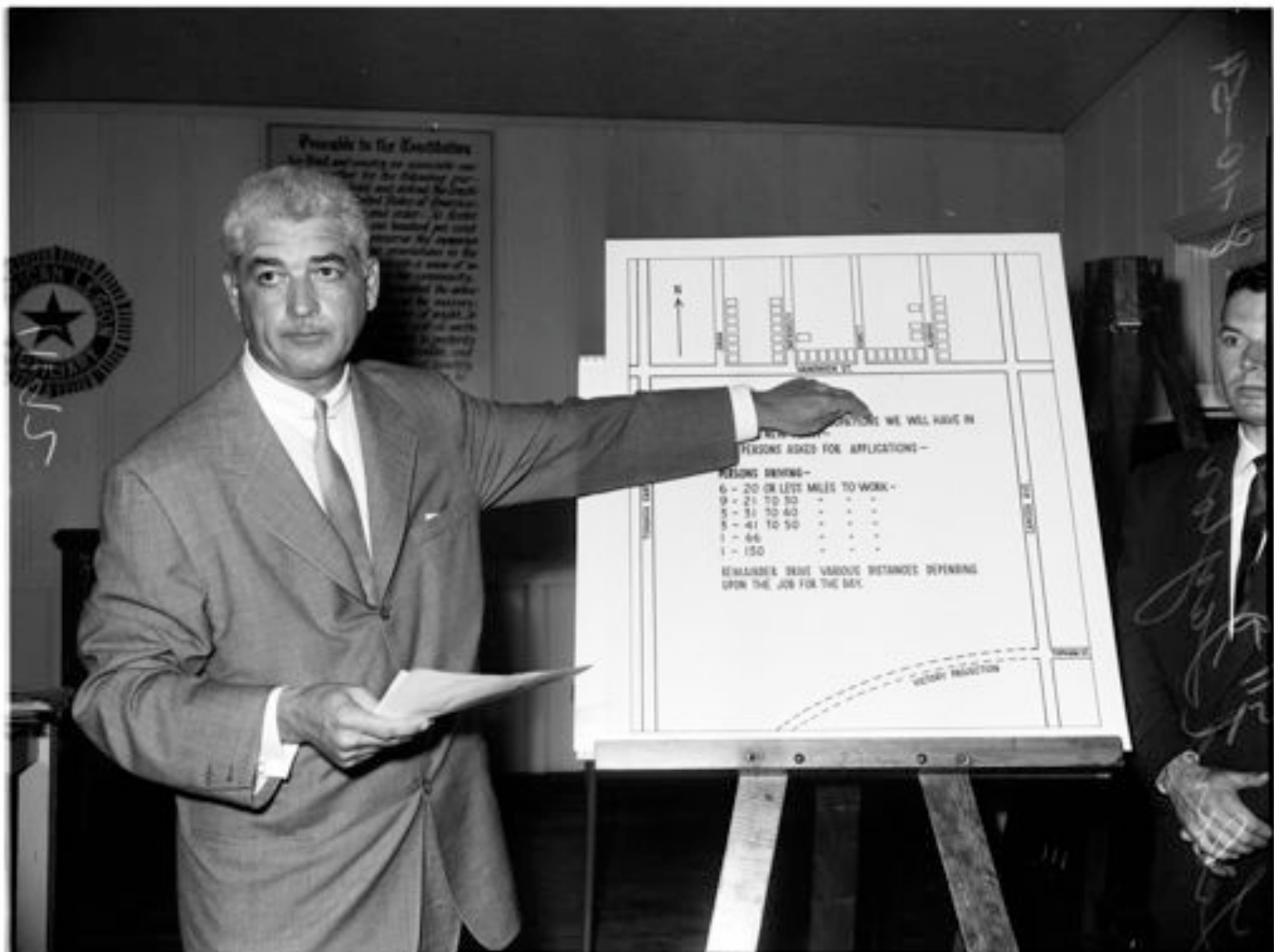






SSFL Site Map





Problems to the Executive

As the Executive is responsible for the success of the organization, he must be able to identify and solve the problems of the organization. This requires a deep understanding of the organization's operations and the ability to make decisions that are in the best interests of the organization. The Executive must also be able to communicate effectively with the organization's employees and other stakeholders.

N

PERSONS WE WILL HAVE IN

PERSONS ASKED FOR APPLICATIONS-

PERSONS DRIVING-	
6 - 20 OR LESS MILES TO WORK -	- - -
9 - 21 TO 30 -	- - -
5 - 31 TO 40 -	- - -
5 - 41 TO 50 -	- - -
1 - 56 -	- - -
1 - 150 -	- - -

REMARKS: BRUI VARIOUS DISTANCES DEPENDING UPON THE JOB FOR THE DAY.

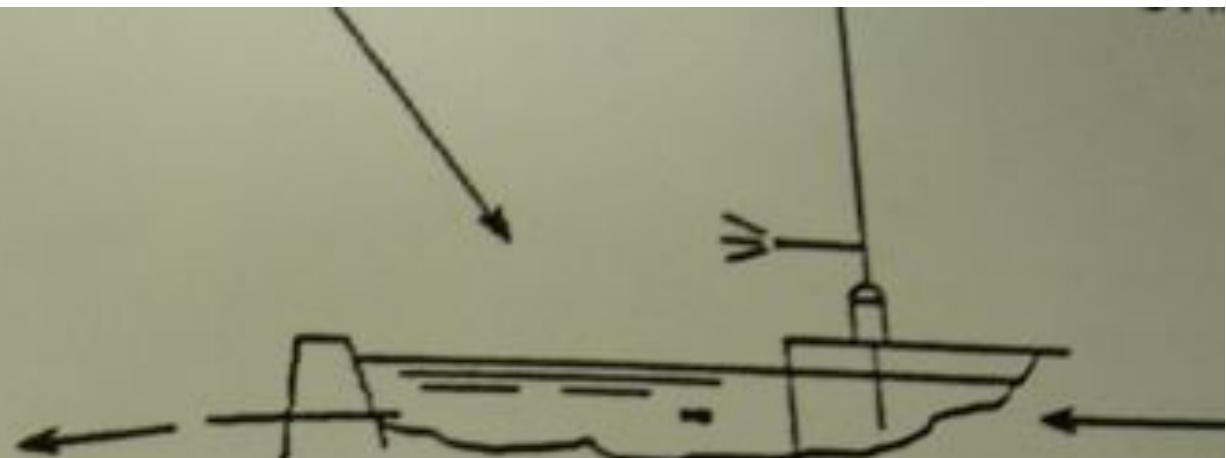
VEHICLE REDUCTION



1-10-24
26

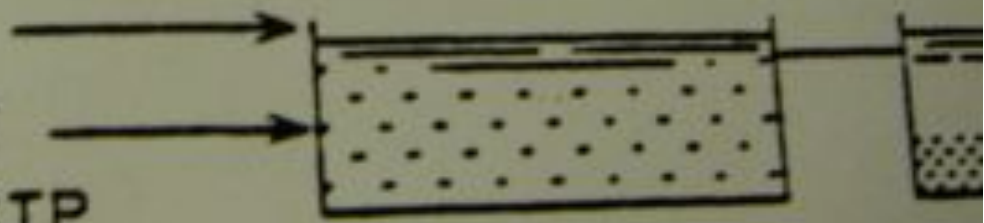
Handwritten notes in a dark ink, including a signature and some illegible text.

DISCHARGE
TO BELL CANYON



R-2 POND
AREA II
2,526,000 gal.

AREA III, IV SEWAGE
AREA II STP EFFLUENT
PUMPED TO AREA III STP



AERATION
CHAMBER

SETTLING
CHAMBER

AREA III SEWAGE





SEF06-00480-260

CONTAMINATED

WATER

DO NOT DRINK

AGUA

CONTAMINADA



GREETINGS! from the Santa

SUSANA

Field Laboratory

Home of the Sodium Reactor Experiment
and more than 30,000 Rocket Engine Tests.

SCHE