

**Table APN
Assessor Parcel Numbers (APNs), Addresses, Building Numbers, Current Property Owners
Former Canoga Park Facility,
Canoga Park, California**

APN Number	Street Address	Current Building Numbers	Former Hughes Building Numbers ¹	Current Owner ²	Current Tenant	DTSC "Zone"
2005-022-001	8531 Fallbrook Los Angeles CA 91304	8531	270	MEPT West Hills, LLC	Boeing	1
2005-022-002	8521 Fallbrook Los Angeles CA 91304	8521	268 S. half of (269)	MEPT West Hills, LLC	Various Commercial	1, 2
2005-022-003	N/A	none	(272), (282)	MEPT West Hills, LLC	N/A	1
2005-022-004	8511 Fallbrook Ave Los Angeles CA 91304	8511	N. half of (269)	MEPT West Hills, LLC	Various Commercial	1
2005-022-005	N/A	N/A (PARK)	N/A	MEPT West Hills, LLC	N/A	N/A
2005-022-006	8501 Fallbrook Ave Los Angeles CA 91304	8501	262	MEPT West Hills, LLC	Various Commercial	2
2005-022-007	N/A	Parking Structure 8421-8501	N/A	MEPT West Hills, LLC	N/A	N/A
2005-002-009	8401 Fallbrook Ave Los Angeles CA 91304	8401, 8403, 8407, 8411, 8413, 8415, Future 8405, Future 22955	(261), 263, 264, 265, (271), (274), 276, 277, 281	MEPT West Hills, LLC	Various Commercial	2, 3
2005-002-011	22801 Fallbrook Ave Los Angeles CA 91304	22801/8531, Future Bldg.'s 22815, 22825, 22835, 22951	(275)	MEPT Roscoe Blvd., LLC	Vacant	3
2005-002-901	N/A	911	N/A	City of Los Angeles Police Department	LAPD 911 Call Center	N/A

Notes:

1 = Building numbers in parenthesis are no longer in existence.

2 = Property Owner Addresses: MEPT, LLC, 8413 Fallbrook Ave., 3rd Floor, Canoga Park, CA 91304

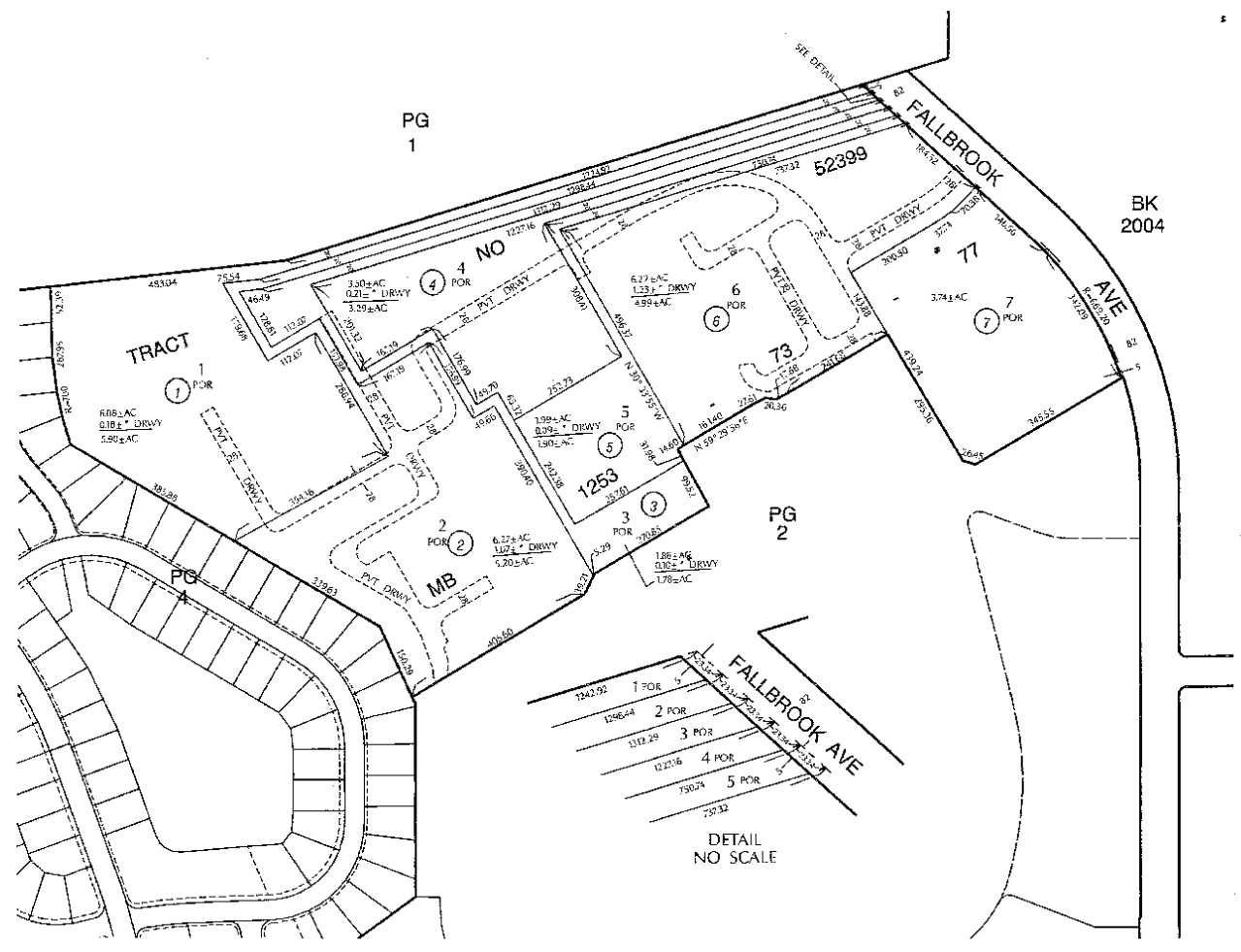
Los Angeles Police Department, Project Management Section, ECCS Division, 250 E. First Street, Room 1500, Los Angeles, CA 90012

View Enlarged Map

View Printing Instructions

2005	22	PA. 2005-2	TRA	County of Los Angeles, Rick Auerbach, Assessor	SEARCH NO	MAP EXTENTS 4096950-4099400 4193100-4194900	OFFICE OF THE ASSESSOR COUNTY OF LOS ANGELES COPYRIGHT © 1998
------	----	------------	-----	--	-----------	---	---

2001



View Enlarged Map

View Printing Instructions

County of Los Angeles: Rick Auerbach, Assessor

2005	2 SHEET	P.A. 2011-27	TRA 16	REVISED 871204058 87081105001001-29	87081105001002-29 87072104003001-29 87101603005001-29	87101603005002-29 00121104002001-29 <i>2004</i> C307110700601-2579	SEARCH NO	MAP EXTENTS 4097360-4099865 4181855-4184370	OFFICE OF THE ASSESSOR COUNTY OF LOS ANGELES COPYRIGHT © 1998
------	---------	--------------	--------	---	---	---	-----------	---	---

